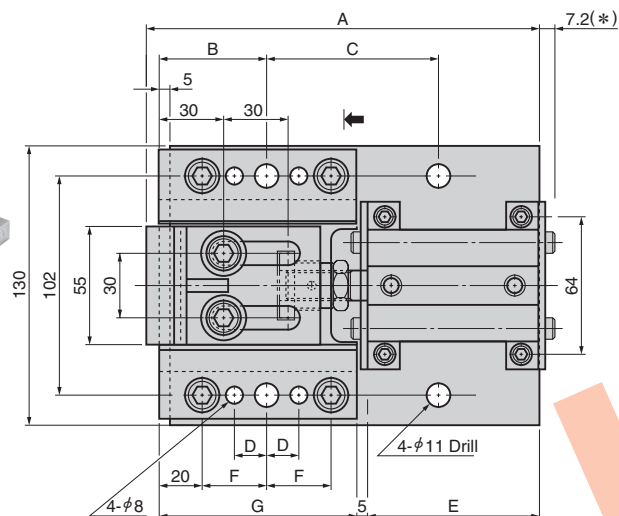
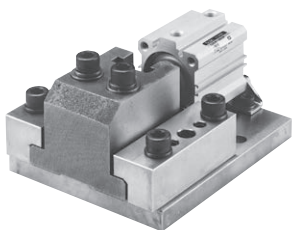


AIR DRIVE TYPE

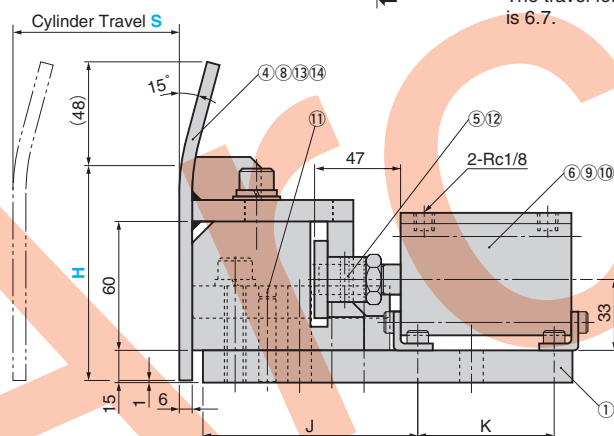
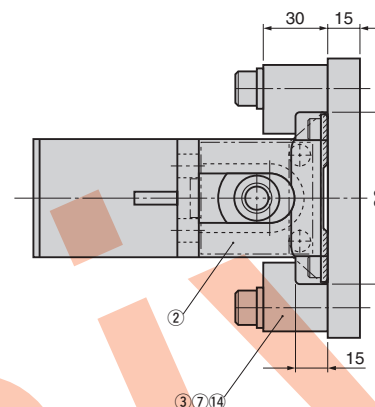



SGAT



* The travel for S30 is 6.7.

Arrow view



 This figure shows SGAT with gauge.

■Table of Components

No.	Description	Qty	Material and Remark
①	Base Plate	1	SS400
②	Slide Holder	1	FC250 with Graphite
③	Guide Plate	RL/1	Bronze with Graphite (S0#50 SP2)
④	Gauge Plate	1	SS400
⑤	Pusher Boss	1	SS400
⑥	Air Cylinder	1	CQ2L40 by SMC
⑦	Hexagon Socket Head Bolt	4	M10×45
⑧	Hexagon Socket Head Bolt	2	M10×35
⑨	Hexagon Socket Head Bolt	4	M6×16
⑩	Spring Washer	4	M6

No.	Description	Qty	Material and Remark
⑪	Spring Pin	4	φ8×40
⑫	Split Pin	1	SWRM10 φ4×30
⑬	Spring Washer	2	M10
⑭	Washer	6	M10

A	B	C	D	E	F	G	J	K	Catalog No.	Cylinder Travel S	H
163	50	60	15	60	30	92	100	43.5	SGAT	30	75 100 150 200 250 300
183		80		80				63.5		50	
248	55	100	20	115	35	122	130	98.5		75	



Order

Catalog No.	S	–	H
SGAT	50	–	200
SGAT	50		

(With gauge)
(Without gauge)