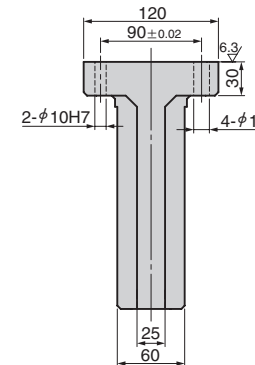
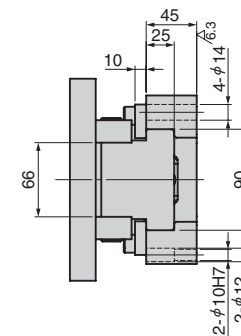
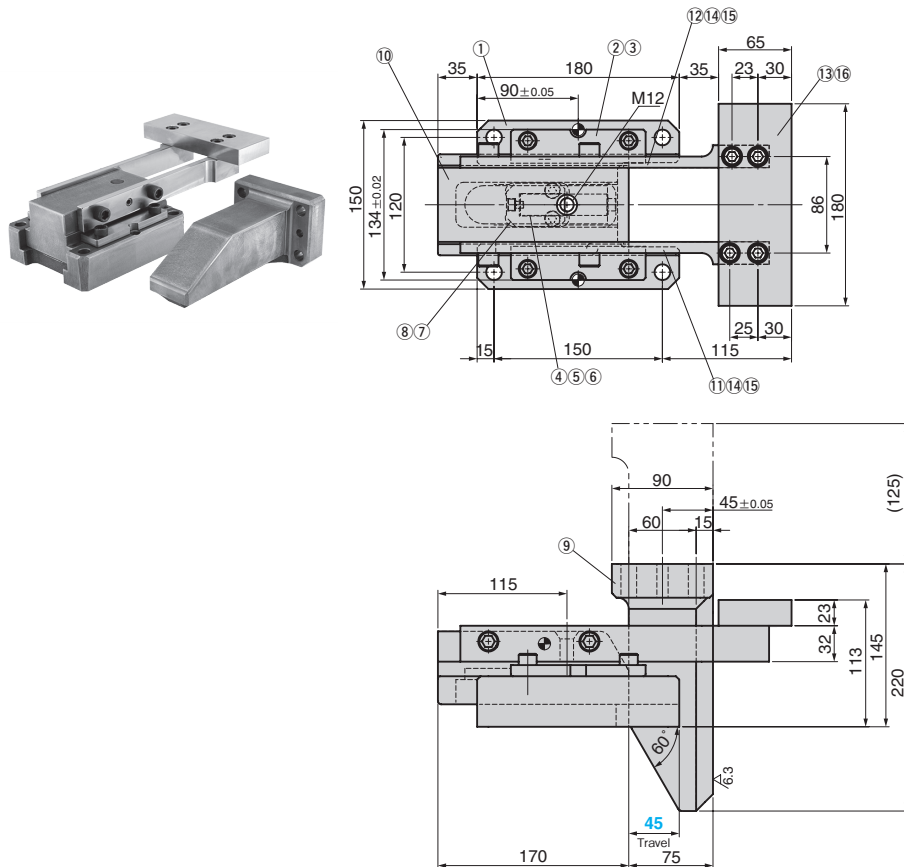


Coil Support GasSpring Type

CAM TYPE

CAD
FILE

STSCG



Cam Diagram

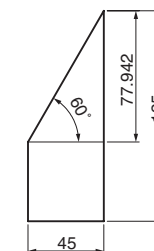


Table of Components

No.	Description	Qty	Material and Remark
①	Base	1	FC250
②	Upper Plate	2	SS400
③	Hexagon Socket Head Bolt	4	SCM435 M10×25
④	Gas Spring	1	Refer to the Spring Specification Table
⑤	Hexagon Socket Head Bolt	1	SCM435 M6×8
⑥	Washer	1	STEEL M6
⑦	SpringBlock	1	SS400
⑧	Low Head Cap Screw	2	SCM435 M8×12
⑨	Driver	1	FC250
⑩	Slider	1	FC250 with Graphite
⑪	Arm-R	1	SS400
⑫	Arm-L	1	SS400
⑬	Plate	1	SS400
⑭	Hexagon Socket Head Bolt	4	SCM435 M12×35
⑮	Dowel Pin With Female Thread	2	SUJ2 φ10×40
⑯	Hexagon Socket Head Bolt	4	SCM435 M10×40

Spring Force N(kgf)		Catalog No	Travel S	Spring Type PS
Initial Load	Final Load			
238(24.3)	353(36.0)	STSCG	45	GK NGK
237(24.2)	365(37.2)			GD NGD

No Code : Coil Spring GD : Gas Spring (DADCO) NGK/NGD/NGS : Without Gas Spring.
GK : Gas Spring (KALLER) Mounting hardware for gas spring included

	Order	Catalog No.	S	—	PS
		STSCG	45	—	GK



Option

Option Code	Specification
NF	Nitrogen gas not charged.



Order

STSCG 45 – GK – NF

Spring Specification

No	Spring Type	Model	Qty	Remark
④	GK	X170-050-TD-2.5MPa	1	Gas Spring (KALLER)
	GD	U.0175.050.TO-2.5MPa	1	Gas Spring (DADCO)



Gas Spring

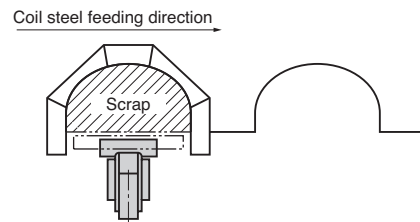
Please contact your local sales representative if you prefer to use a gas spring not specified in our catalog.
For use and maintenance of gas spring, please contact the manufacturer directly.

CAM TYPE



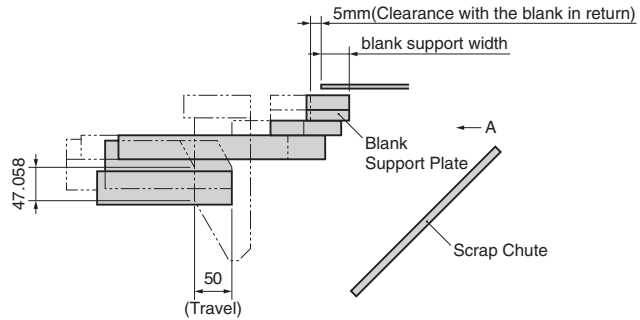
Coil support cam type means:

The cam type coil support is used to secure the space for scrap machining.
This corrects deflection of a blank sheet to prevent hitting with a cutter.



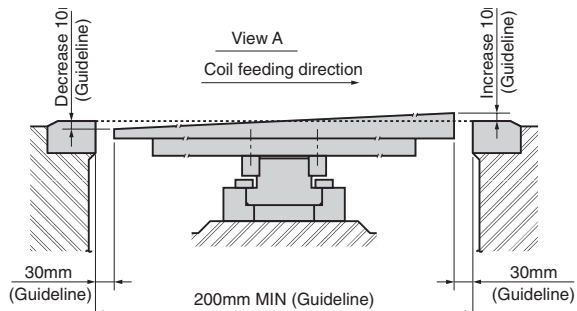
■ For Operation

- Set the position of the blank and the coil support.
- The guideline of the clearance between the blank in return (pressing) and the support plate is 5mm.




- Standard for use of Coil Support

- When the distance between cutters is 200mm or more and the spring type coil support cannot be used, use this cam type.
- The guideline of distance between the cutter and the blank support plate is 30mm.



 The blank support plate should be manufactured by customers according to the blanking die specification.

 Refer to the next page for the standard table.

This page
intentionally
left blank