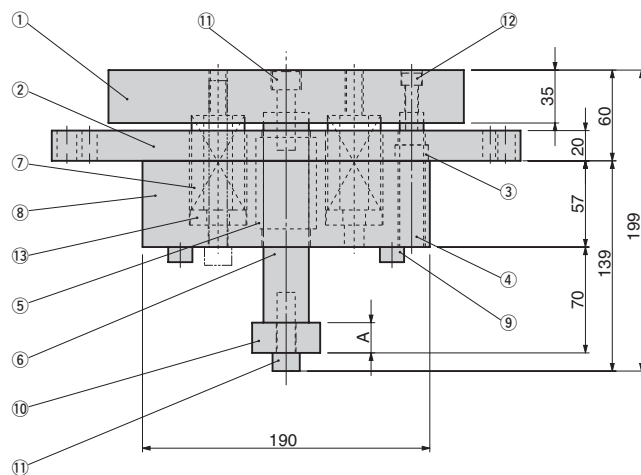
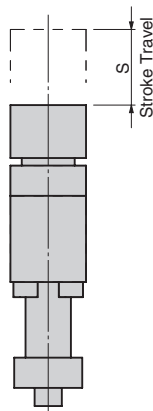
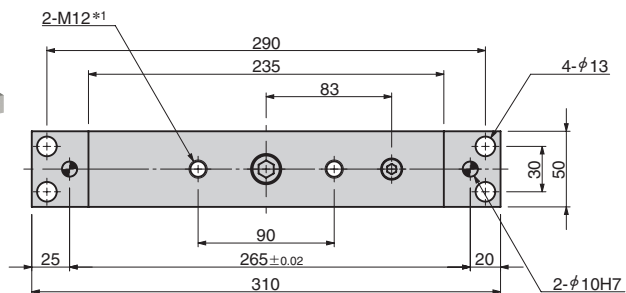
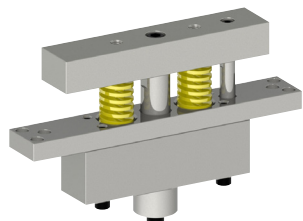


NEW Ram Lifter

Panel Transfer Components

SORML

CAD
FILE



*1 To lock out in closed position, put a 5mm-spacer between Lifter Plate (①) and Base Plate (②) and fasten by a bolt. The spacer and the bolt are not included.

No.	Description	Qty	Material and Remark
1	Lifter Plate	1	Steel
2	Base Plate	1	Steel
3	Bushing A	1	SO#50SP2
4	Guide Pin A	1	Steel
5	Bushing B	1	SO#50SP2
6	Guide Pin B	1	Steel
7	Coil Spring	2	See Spring Specifications

No.	Description	Qty	Material and Remark
8	Base Plate Block	1	Steel
9	Hexagon Socket Head Bolt	4	M10
10	Stopper	1	Steel
11	Hexagon Socket Head Bolt	2	M12
12	Hexagon Socket Head Bolt	1	M8
13	Spacer	2	Steel (Only for SORML50)

Catalog No.	Stroke Travel S	A	Weight kg
SORML	40	30	9.6
	50	20	9.7



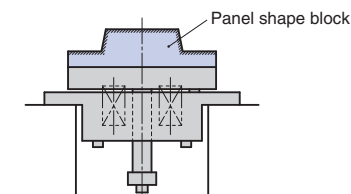
Catalog No. S
SORML 40

Spring Specifications

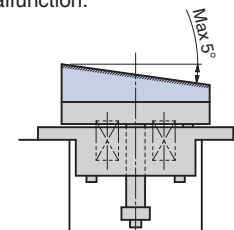
S	Spring Model	Installation		Final	
		Length [mm]	Load [N]	Length [mm]	Load [N]
40	TF35-125	112.5	383.5	72.5	1610.7
50				62.5	1917.5

Guidance

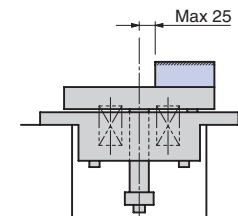
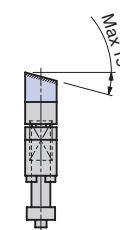
- Mounting panel shape block to lifter as shown.



- Please follow application instruction to ensure excessive unbalanced loads do not lead to lifter malfunction.



Inclination of panel shape is up to 5° in the longitudinal direction and 15° in the lateral direction.



Panel shape block is no more than 25 mm from the center. If more than 25 mm is needed use a pusher pin, etc. on the other side to keep lifter balance.

- Lifter Plate has a looseness of approx. 0.3 mm on one side due to the clearance between Guide Pin and Bush.

