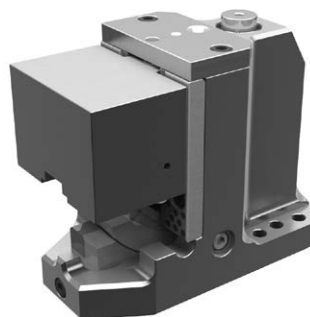


# COUNTER CAM UNIT CTCC [Overview]

## Compact Type

### Product Information

- Mount face width 120 mm.
- Space saving.
- High rigidity by new structure.
- Easy maintenance.

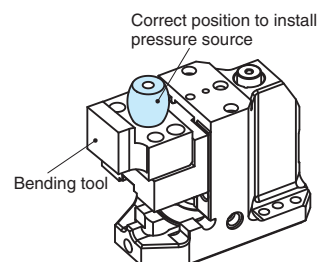
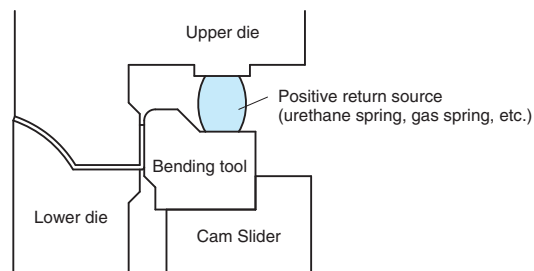


### ■Features

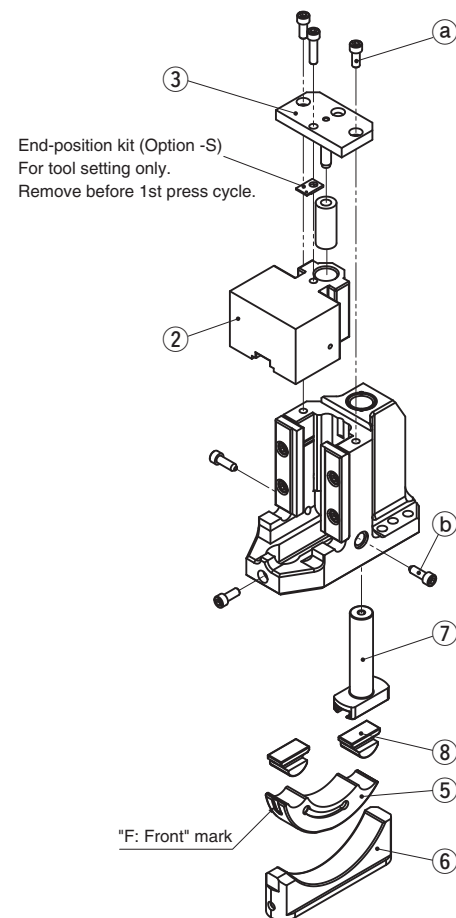
- Its compact design enables to flange panels upward even in a narrow space.
- The new structure prevents the stress concentration, which does not require to install a backup.
- The end-position kit and spring can be assembled or disassembled with the whole unit mounted on the die.
- The elimination of the box-type holder enables to avoid interferences with front objects.

### ■DESIGN ONLY

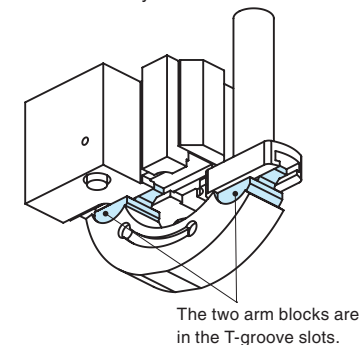
In order to make the Counter Cam Unit correctly track the up-down motion of the press, use a return assist pressure source (Urethane Spring, Gas Spring, etc.) (See the figure below.)



### ■CTCC Assembly Instructions



#### 〈Assembly Precautions〉



#### ●Disassembly

- 1) Remove Hexagon Socket Head Bolts (a), to pull out Stopper Plate (3).
- 2) Pull and remove Cam Slider (2) upward.
- 3) Remove Hexagon Socket Head Bolts (b). With Cam Main Unit laid down horizontally, use the M10 tap at the bottom of Arm Guide (6) to pull it out.
- 4) Disassemble Arm (5), Arm Block (8) and Driver Pin (7).

#### ●Assembly

- Assembly is the reverse procedure of disassembly.
- Ensure that all parts are clean, particularly the sliding components to which a small amount of lubricant is applied and is then placed in position.
  - Make sure that all bolts are tighten to the recommended torque after assembly and disassembly.
- Note: Make sure to assemble the arm with engraved "F" (= Front) mark facing in the correct direction.



#### Assembly Precautions

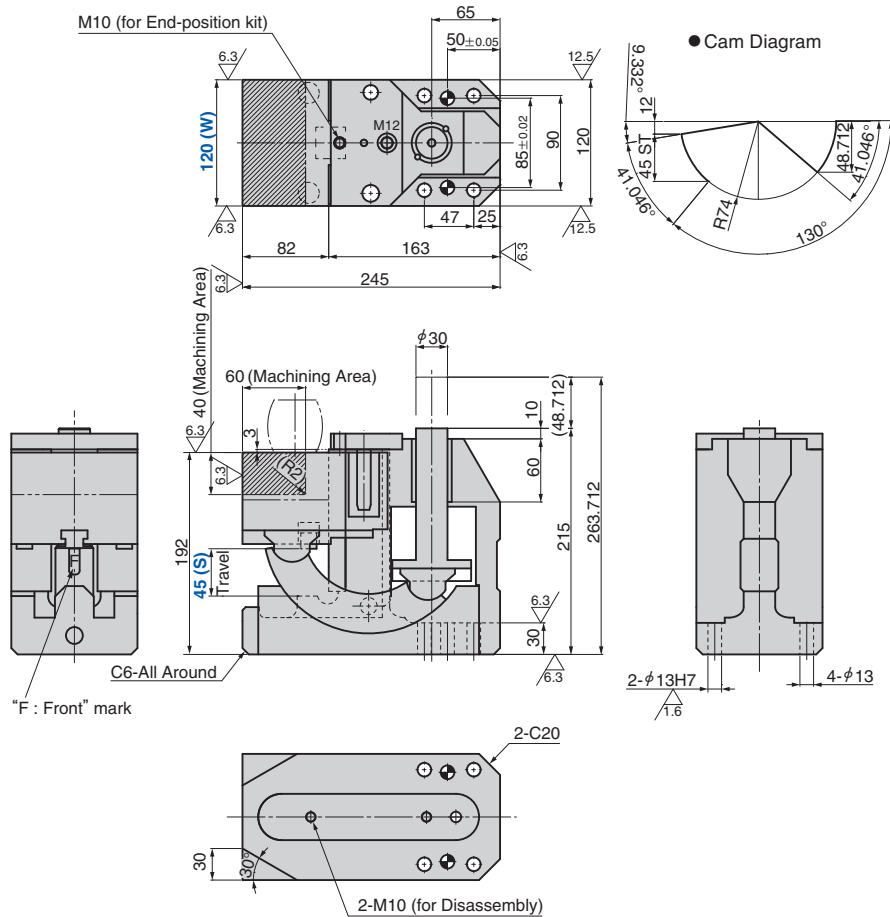
Make sure to install the two arm blocks into each T-groove slot of the cam slider and the driver pin as shown to the right.

# CTCC

## Compact Type

### Counter Cam Unit

CTCC120-45



Working Force kN (tonf) 1,000,000 strokes	Spring Force N (kgf)		Total Weight kg	Catalog No.	W	Travel S
	Initial Load	Final Load				
9.8 (1.0)	150.7 (15.3)	574.6 (58.6)	28.8	<b>CTCC</b>	<b>120</b>	<b>45</b>



Catalog No.	W	S	Option
<b>CTCC</b>	<b>120</b>	<b>45</b>	<b>N12</b>



Option Code	Specification
<b>N12</b>	φ 12 mm dowel holes provided on holder.
<b>S</b>	Lock plate attached.

#### Spring Specification

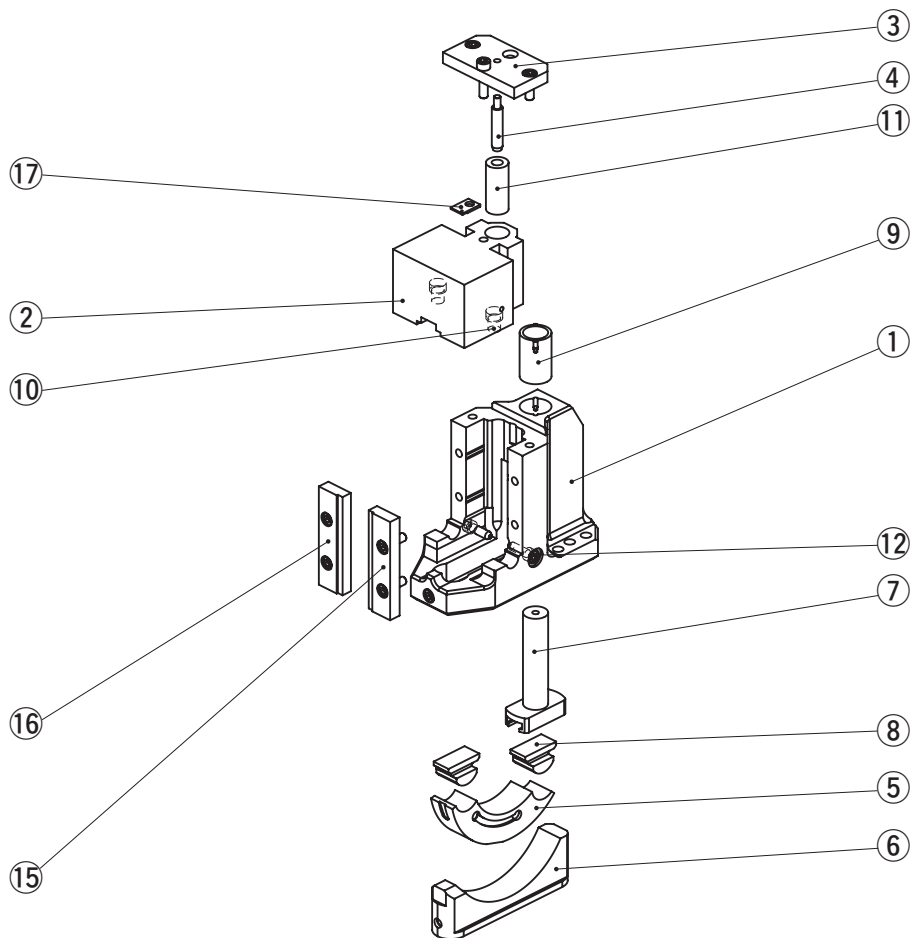
No.	Spring Model	Qty	Remark
11	TF27-125	1	Coil Spring 9.42 N/mm (0.96 kgf/mm) Life expectancy of Coil Spring is approximately 300,000 strokes.

# CTCC [Table of Components]

Compact Type

## Counter Cam Unit

CTCC



No.	Description	Qty	Material and Remark
1	Cam Holder	1	Cast Iron
2	Cam Slider	1	Cast Iron with Graphite
3	Stopper Plate	1	Steel
4	Spring Guide Pin	1	Steel
5	Arm	1	Steel
6	Arm Guide	1	Cast Iron with Graphite
7	Driver Pin	1	Steel
8	Arm Block	2	Bronze with Graphite
9	Oilless Bush	1	Bronze with Graphite
10	Stopper	2	—
11	Spring	1	TF27-125
12	Ball Plunger	2	—
15	Holding Plate R	1	Cast Iron with Graphite
16	Holding Plate L	1	Cast Iron with Graphite
17	Locking Plate (Option -S)	1	Steel

Bolts, nuts, dowels, and washers for assembly are not indicated.