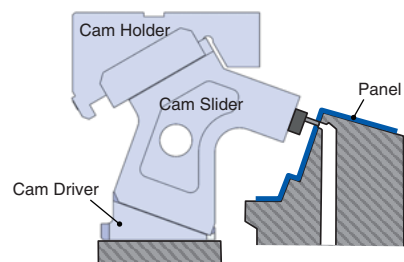


Product Information

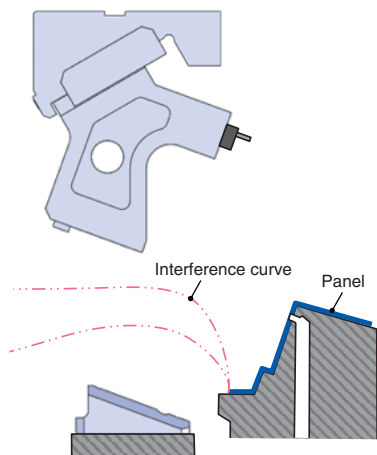
- Mount face width 50 mm.
- Working angles from 10° to 30° in 5° increments.
- V-shaped guide.
- Space saving.
- Easy maintenance.



Application Examples

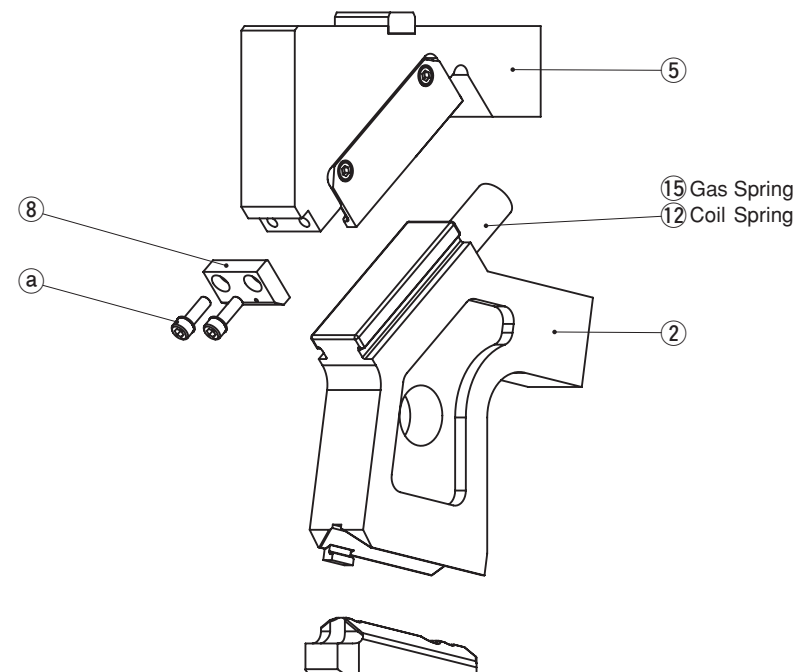


Cam position during panel processing.



Cam does not interfere during panel transfer.

TSHC Assembly Instructions



Disassembly

- 1) Remove Hexagon Socket Head Bolts (a), to pull out Stopper Plate (8).
- 2) Pull out and remove Cam Slider (2) from Cam Holder (5) to the rear.

Assembly

Assembly is the reverse procedure of disassembly.

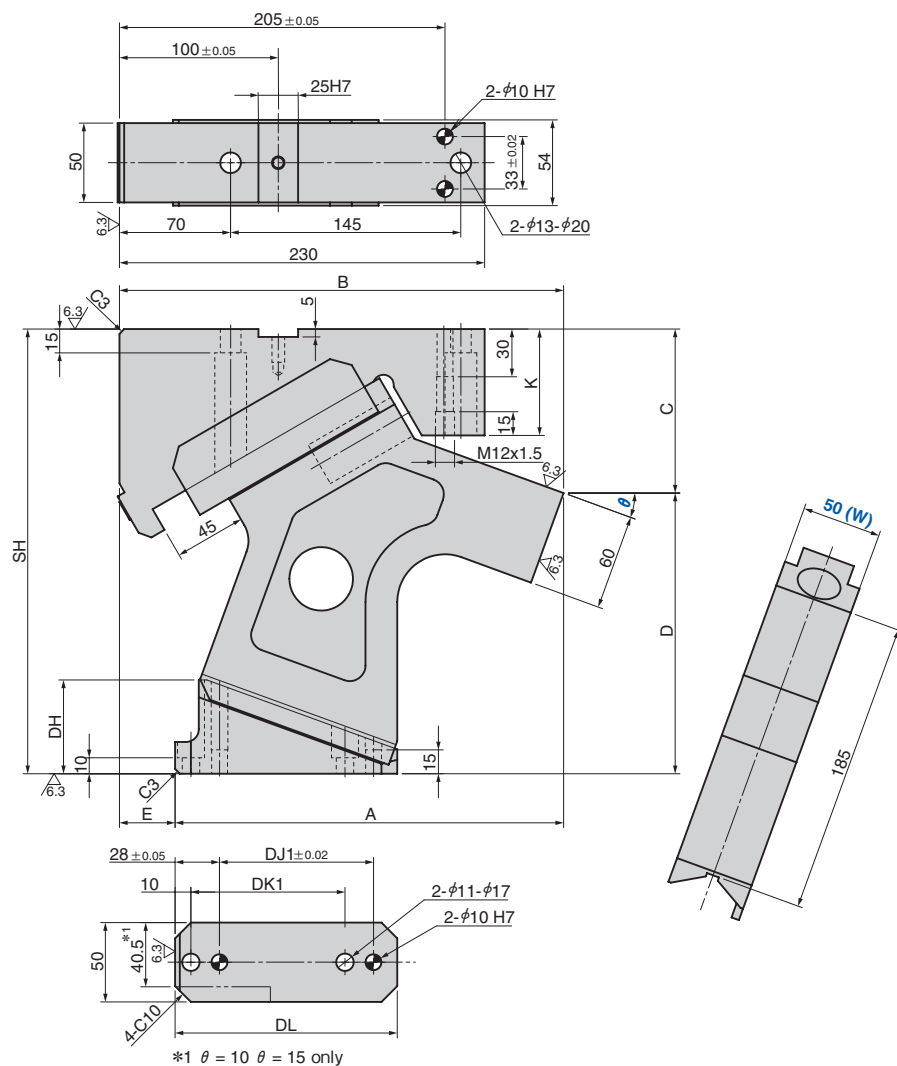
- Ensure that all parts are clean, particularly the sliding components to which a small amount of lubricant is applied and is then placed in position.
- Take care that the respective tolerances are observed when assembling Cam Slider and Cam Holder, which also should be identified by the same serial number.
- Make sure that all bolts are tighten to the recommended torque after assembly and disassembly.



Gas Spring

Please contact your local sales representative if you prefer to use a gas spring not specified in our catalog. For use and maintenance of gas spring, please contact the manufacturer directly.

TSHC50



Working Force [kN (tonf)] 1,000,000 strokes	Spring Force [N (kgf)]		Catalog No.	W	θ 5° increments	Spring Type PS
	Initial Load	Final Load				
	141 (14.4)	565 (57.7)				No Code (Coil Spring)
14.7 (1.5)	—	657 (67.1)	TSHC	50	10~30	GK NGK
	—	554 (56.5)				GD NGD
	—	693 (70.7)				GS NGS

No Code: Coil Spring GK: Gas Spring (KALLER) GD: Gas Spring (DADCO) GS: Gas Spring (SDT)
NGK/NGD/NGS: Without Gas Spring Parts for spring assembly are included.



Order

Catalog No.	W	—	θ	—	PS	—	Option
TSHC	50	—	10	—	GK	—	NF - K



Option

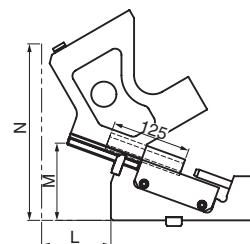
Option Code	Specification
NF	Nitrogen gas not charged.
K	Key attached.

θ	A	B	C	D	E	SH	DH	DL	DK1	DJ1	K
10	228.88	278.88	79.58	190.42	50	270	37	130	87	87	60
15	237.20	277.20	92.86	182.14	40	275	46	135	92	92	65
20	244.75	279.75	103.25	176.75	35	280	59	140	97	97	67
25	260.57	290.57	118.76	166.23	30	285	71	145	102	102	70
30	266.10	286.10	127.41	162.59	20	290	87	150	107	107	70

Spring Specification

No.	PS	Spring Model	Qty	Remark
12	No Code	TF27-125	1	Coil Spring 9.42 N (0.96 kgf/mm) Life expectancy of Coil Spring is approximately 1,000,000 strokes.
	GK	R19-50-Blue	1	Gas Spring (KALLER)
15	GD	C.090.050.BU	1	Gas Spring (DADCO)
	GS	SFL50.50	1	Gas Spring (SDT)

Rear Removal Space

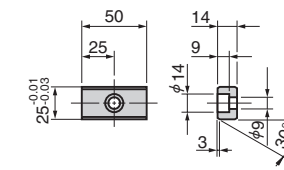


θ	L	M	N
10	60	200	360
15	75	183	340
20	86	320	320
25	95	145	300
30	110	123	280

Option

Key Specification (-K)

LKU25-50 (A M8 Bolt is included.)



LONG LEG CAM [Table of Components]

Panel Avoidance Cam

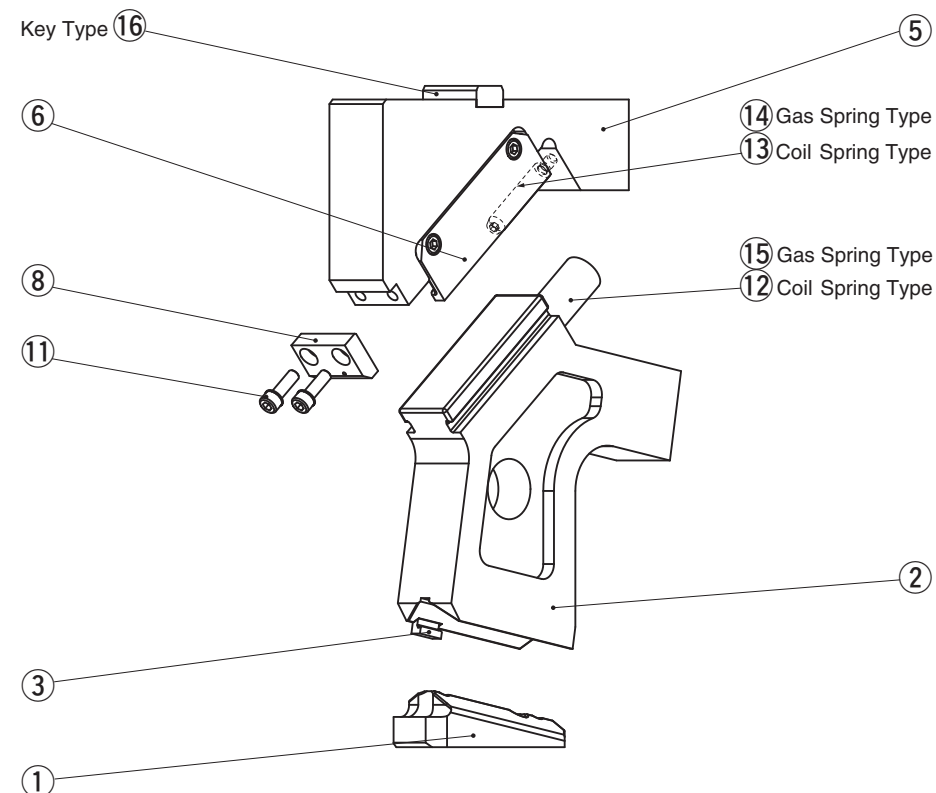
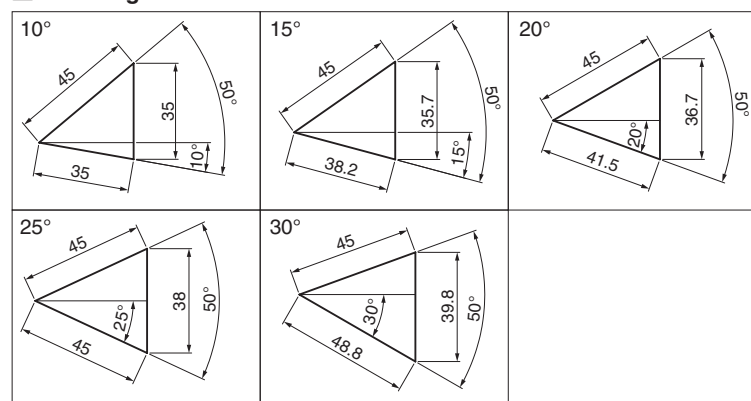
For Pierce

Aerial Cam Unit

Weight

θ	Total Weight kg	Cam Slider Weight kg	Tool Weight kg
10	16.1	7.6	Less than 1 kg as it shall be for 1 Piercing.
15	16.2	7.6	
20	16.4	7.8	
25	16.2	8.1	
30	16.6	8.5	

Cam Diagram



No.	Description	Qty
1	Cam Driver	1
2	Cam Slider	1
3	Cam Positive Return	1
5	Cam Holder	1
6	Slide Keeper	2
8	Stopper Plate	1
9	Stopper	2
12	Coil Spring	1
13	Spring Guide Pin	1
14	StopPin	1
15	Gas Spring	1
16	Key	1

Bolts, nuts, dowels, and washers for assembly are not indicated.