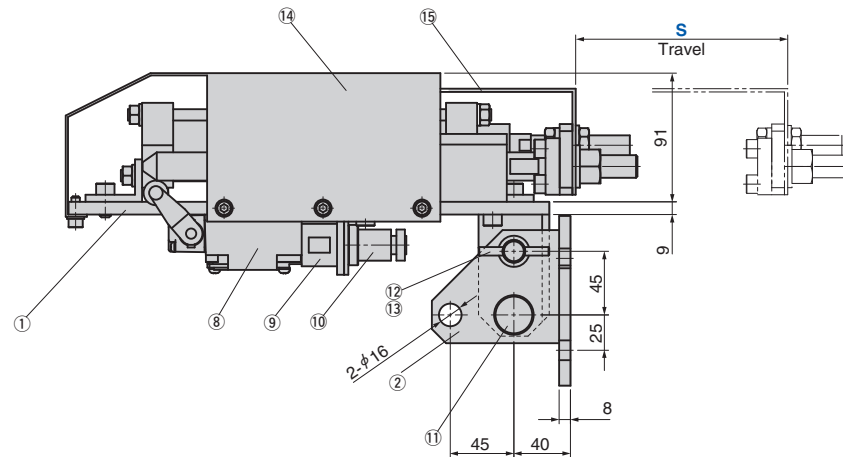
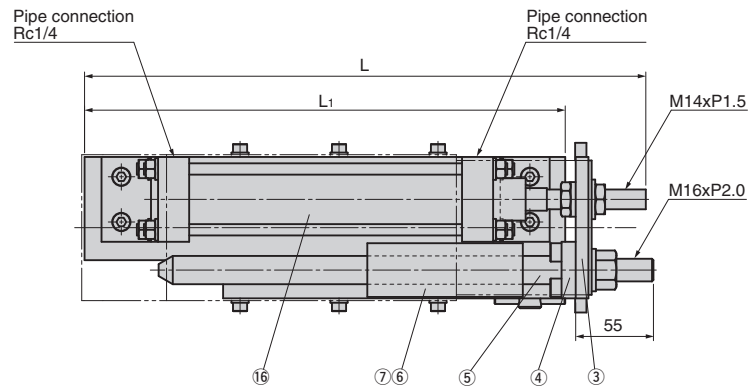


Compact Type

Panel Transfer Components

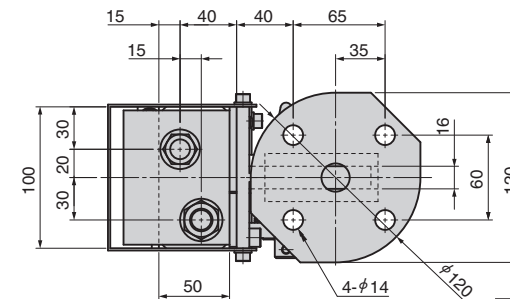
SOAPC



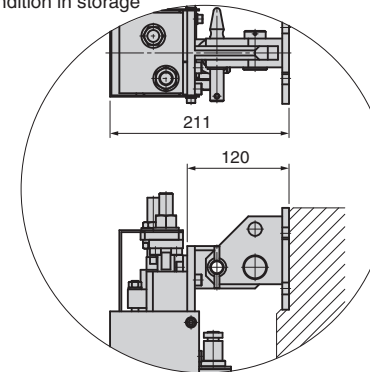
Catalog No.	Travel S	L	L ₁
SOAPC	150	395	340
	250	495	440



Catalog No.	S
SOAPC	150



Condition in storage




No.	Description	Qty	Material and Remark
1	Base Plate	1	Steel
2	Bracket	1	Steel
3	Connector Plate	1	Steel
4	Set Plate	1	Steel
5	Guide Pin	1	Steel
6	Bushing Holder	1	Steel
7	Guide Bushing	2	SO#50F
8	Limit Switch	1	Yamatake
9	Connector Holder	1	Steel
10	Connector	1	Nanao
11	Joint Pin	1	Steel
12	Stopper Pin	1	Steel
13	Chain	1	Length 200 mm
14	Cover	1	Steel
15	Cover	1	Steel
16	Air Cylinder	1	—

■ Guideline for Use

- The unit can be folded when the die is stored.
- Use this unit for ejection of small or intermediate sized panels.



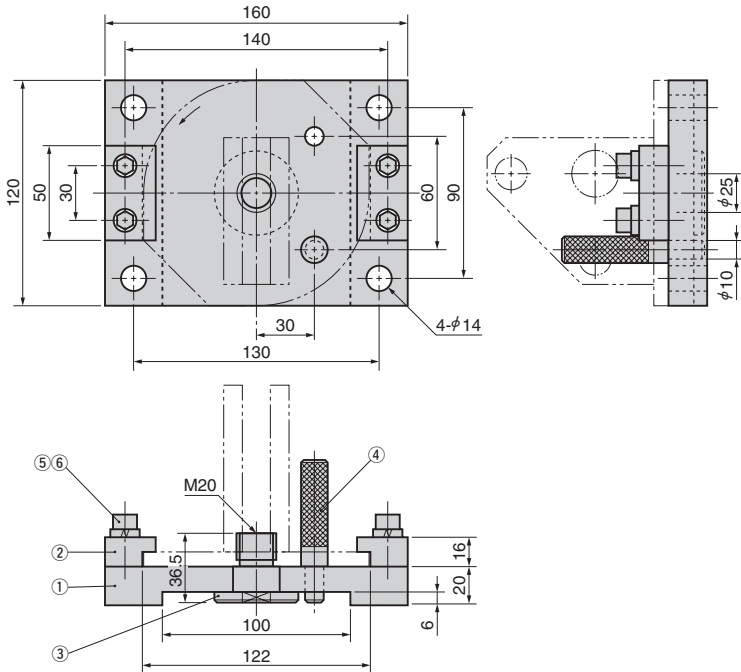
 Refer to page 339 for pusher swivel adapter.

Swivel Adapter

For Pusher

Panel Transfer Components

ADM (Regular Type)



No.	Description	Qty	Material and Remark
1	Base Plate	1	Steel
2	Side Guide	2	Steel
3	Support Pin	1	Steel
4	Fixed Pin	1	Steel
5	Hexagon Socket Head Bolt	4	M8x35
6	Spring Washer	4	M8



Catalog No.

ADM