

Lifter Guide Post Set

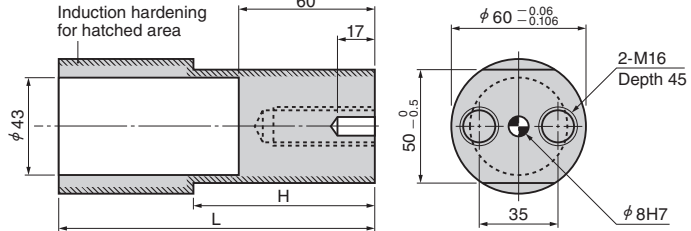
Dowel Locating Type

Panel Transfer Components

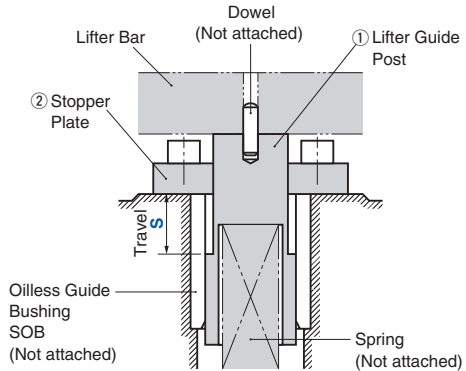
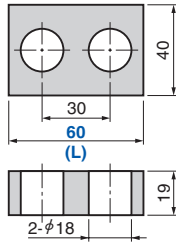
LGPKS (Dowel Locating Type)



LGPK



LPST



LGPKS

No.	Catalog No.	Qty	Material and Remark
1	LGPK	1	Steel
2	LPST	2	Steel

● Recommended Oilless Guide Bushing SOB

Catalog No.	S	L	H
LGPKS	40	140	80
LGPK	60	160	100

Catalog No.	L
LPST	60

Catalog No.	S	Applicable Bushing
LGPKS	40	SOB60-74-60
	60	SOB60-74-80



Order

Catalog No.	S
LGPKS	40
LGPK	60

Catalog No.	L
LPST	60

Guideline for Use

- Only adjustment of the dowel interval can achieve the accuracy.
- Use two lifter guide posts for one lifter bar.
- This is used for the side area in the progressive die.
- Standard travels are 40 and 60. Other travels less than 60 mm are available.