

Lifter Guide Post Set

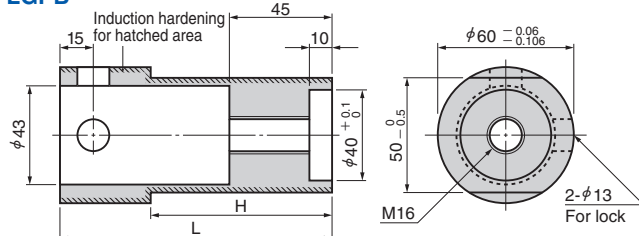
Floating Type

Panel Transfer Components

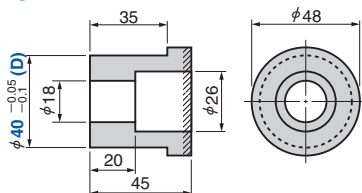
LGPBS (Floating Type)



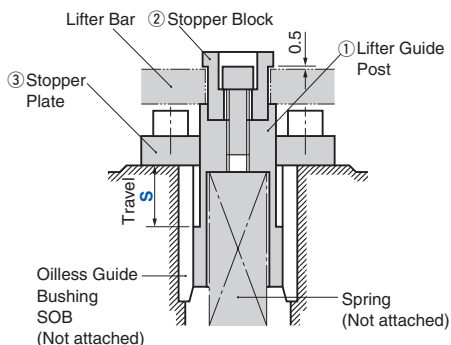
LGPB



LSB



When the preliminary pin is used for holding, flame harden the hatched area.



LGPBS

No.	Catalog No.	Qty	Material and Remark
1	LGPB	1	Steel
2	LSB	1	Steel with Bolts
3	LPST	2	Steel

Catalog No.	S	L	H
LGPBS LGPB	40	120	80
	60	140	100
	80	160	120

Catalog No.	D
LSB	40

● Recommended Oilless Guide Bushing SOB

Catalog No.	S	Applicable Bushing
LGPBS	40	SOB60-74-60
	60	SOB60-74-80
	80	SOB60-74-100



Order

Catalog No.	S
LGPBS LGPB	40 60

Catalog No.	D
LSB	40

■ Guideline for Use

- Set the lifter bar and the stopper block so that the clearance may be 0.5 mm. This eliminates adjustment of interval accuracy between each post.
- This is used at the center of the transfer die and the progressive die.
- Standard travels are 40, 60 and 80. Other travels less than 80 mm are available.
- Since the lock hole is provided, the unit can be locked at the bottom dead center.