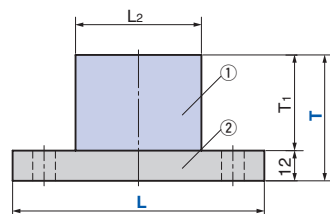
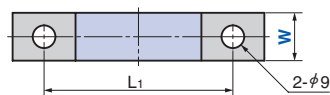
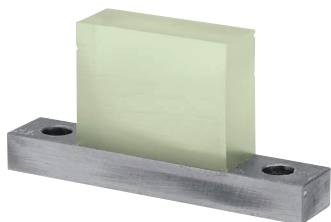


Urethane for Lifter

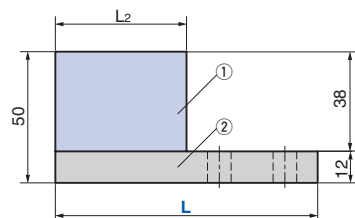
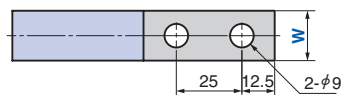
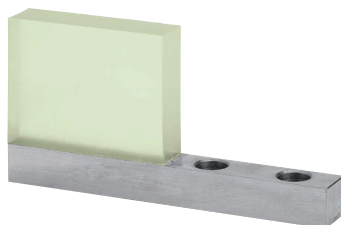
Panel Transfer Components

LGCUT (Both End Type)



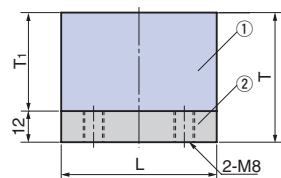
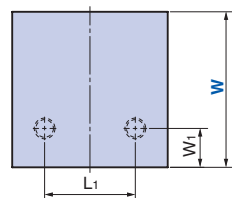
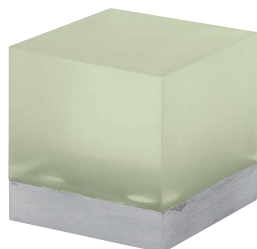
〈Material〉 ①Urethane Shore
②SS400

LGCUC (One End Type)



〈Material〉 ①Urethane Shore
②SS400

LGCUB (Block Type)



〈Material〉 ①Urethane Shore
②SS400

Catalog No.	W	L	T	L ₁	L ₂	T ₁
	12	100	50	75	50	
		100		75	50	38
		150	50	125	100	
LGCUT	19	200		175	150	
		100		75	50	88
		150	100*1	125	100	
		200		175	150	
	38	150		125	100	38
		200		175	150	

*1 Since T = 100 has a reinforcement rod, be careful for the cutting range. (Refer to the figure on the right)

Catalog No.	W	L	L ₂
	12	100	50
LGCUC	19	100	50
		150	100

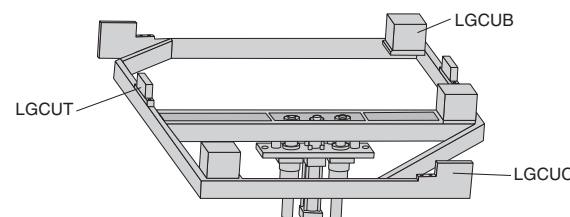
Catalog No.	W	L	T	L ₁	W ₁	T ₁
	50	50	50	30	10	38
LGCUB	60	60	50	35	15	
	70	70	75	40	20	63
	90	90	75	50	30	



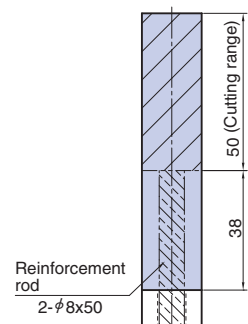
Catalog No.	W	L	T
LGCUT	19	150	50
LGCUC	19	100	
LGCUB	60		

Precautions for Use

- Use it on the lifter arm to prevent damage to outer panels.
- Avoid unbalanced load onto the urethane as much as possible as such unbalanced load condition may cause the urethane to fail.
- The maximum operating temperature of the urethane is 70°C/158°F. Monitor temperatures closely during additional machining as well as the atmospheric conditions during the use of the product.



● Cutting range of LGCUT



When L = 100, the reinforcement rod is one.