

Panel Input Detector Gauge

PARALLEL LINK GAUGE SURFACE PLATING TYPE

CAD
FILE

HTKML (L Type)

HTKMR (R Type)

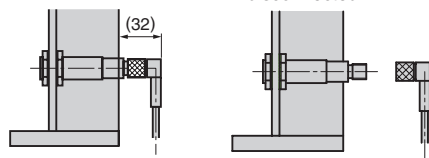


② Detection Lever

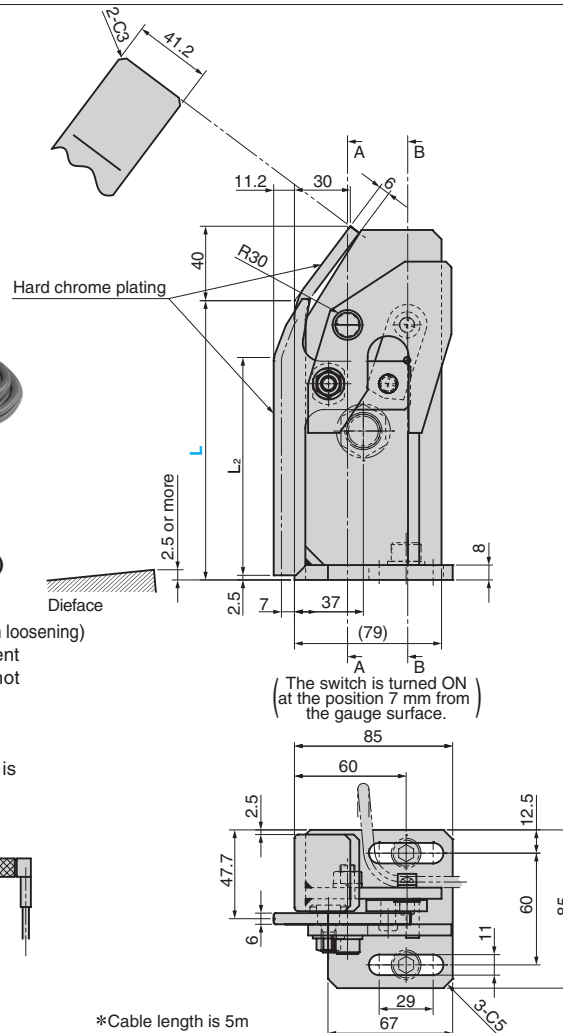
■ EFECTOR Connector (IG0348, UL Standard)

- Operation power voltage
AC/DC (common) for 20V to 250V
- Connector type (with Prevention mechanism from loosening)
Since the cable can be removed, replacement of the switch or wiring for adjustment is not required. (figure below)

EFECTOR's Switch Mounting

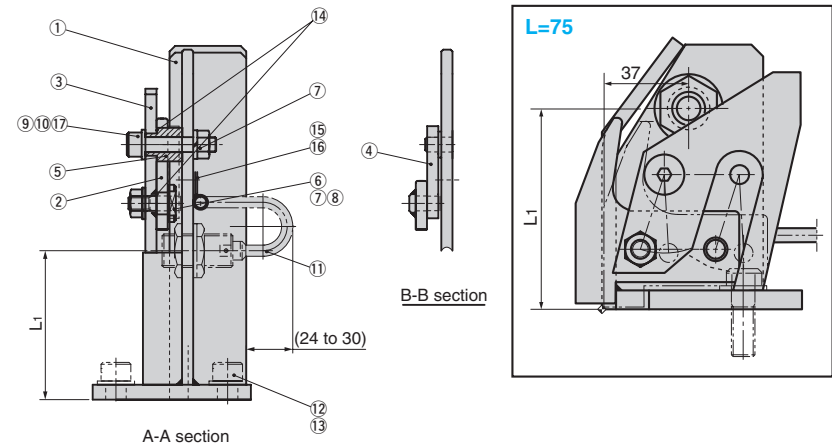


* Connector (cable) is disconnected.



* Cable length is 5m

*This figure shows the L type.
The R type is symmetrical.

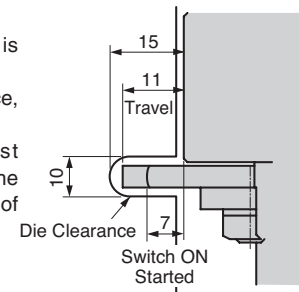


■ Table of Components

No.	Description	Qty	Material and Remark	No.	Description	Qty	Material and Remark
①	Gauge	1	SS400 Hard chrome plating	⑪	Proximity Switch (for AC)	(1)	E2E-X5Y1 5M by Omron
②	Detection Lever	1	SS400 Hard chrome plating	⑫	Proximity Switch (for DC)	(1)	E2E-X5C118 5M by Omron
③	F Link	1	SS400	⑬	Proximity Switch (for EC)	(1)	IG0348 by EFECTOR
④	R Link	1	SS400	⑭	Hexagon Socket Head Bolt	2	M10×25(Accessory)
⑤	Collar	1	S45C	⑮	Flat Washer	2	M10(Accessory)
⑥	Pin	1	S45C	⑯	Sim Ring	2	CIMR12-18-0.2
⑦	Hexagon Nut	2	M8	⑰	Round Head Screw	1	M4×8
⑧	Washer	1	M8	⑱	Cable clip	1	UC-1
⑨	Spring Washer	1	M8	⑲	Flat Washer	1	WSSBH16-8-2
⑩	Hexagon Socket Head Bolt	1	M8×40				

■ Features of Unit

- Since the detection lever moves parallel, the detection switch is activated regardless of vertical variation of the panel position.
- Position alignment and adjustment of the gauge mounting surface, the lever length and the lever support point are not required.
- Since the lower end of the detection lever moves almost horizontally, machining of the step between the die face and the gauge mounting surface is approx. 3 mm. It is great reduction of machining hours.



L1	L2	Catalog No.	L	Switch Type
85	42	HTKML	75	AC (for 24V to 240V)
30	67	HTKMR	100	DC (24V)
80	117		150	EC (EFECTOR Connector)
				SN (without switch)



Option

Option Code	Specification
M12	Mounting bolt hole width is changed to 13 (for M12). The bolt and the washer are not attached.



Order

Catalog No.	L	Switch Type	Option
HTKML	100	AC	M12
HTKMR	150	SN	