

Panel Input Detector Gauge

Parallel Link Gauge Surface Plating Type

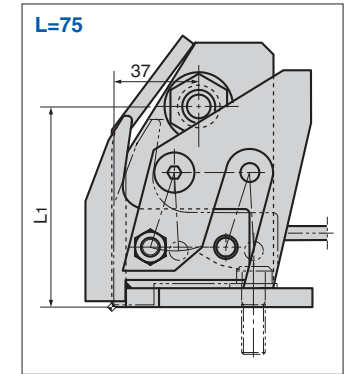
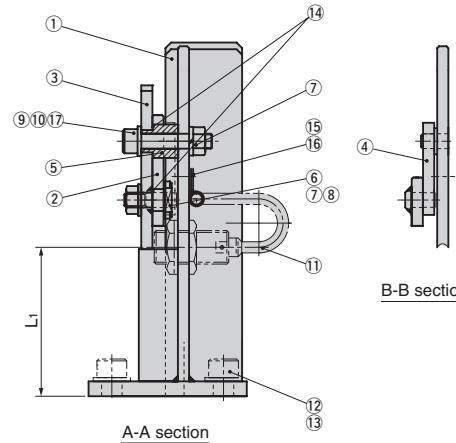
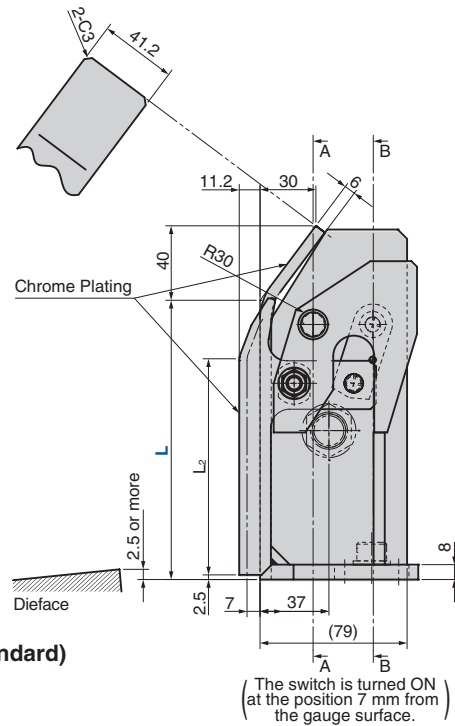
Gauge

HTKML (L Type)
HTKMR (R Type)

CAD
FILE



This figure shows the L type.
The R type is symmetrical.

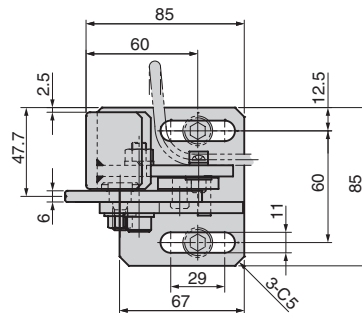
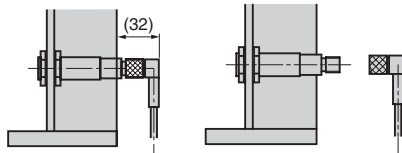


EFECTOR Connector (IG0348, UL Standard)

- Operation power voltage
AC/DC (common) for 20 V to 250 V
- Connector type (with Prevention mechanism from loosening)
Since the cable can be removed, replacement of the switch or wiring for adjustment is not required. (figure below)

EFECTOR's Switch Mounting

Connector (cable) is disconnected.



Catalog No.	L	Switch Type	L1	L2
HTKML	75	AC (24V~240V)	85	42
HTKMR	100	DC (24V)	30	67
	150	EC (EFECTOR Connector)		
		SN (without switch)	80	117



Option Code	Specification
M12	Mounting bolt hole width is changed to 13 (for M12). The bolt and the washer are not attached.

Order	Catalog No.	L	Switch Type	Option
	HTKML	100	AC	M12
	HTKMR	150	SN	

No.	Description	Qty	Material and Remark
1	Gauge	1	Steel chrome plating
2	Detection Lever	1	Steel chrome plating
3	F Link	1	Steel
4	R Link	1	Steel
5	Collar	1	Steel
6	Pin	1	Steel
7	Hexagon Nut	2	M8
8	Washer	1	M8
9	Spring Washer	1	M8
10	Hexagon Socket Head Bolt	1	M8x40

No.	Description	Qty	Material and Remark
	Proximity Switch (for AC)	(1)	E2E-X5Y1 5M by Omron
11	Proximity Switch (for DC)	(1)	E2E-X5C118 5M by Omron
	Proximity Switch (for EC)	(1)	IG0348 by EFECTOR
12	Hexagon Socket Head Bolt	2	M10x25 (Accessory)
13	Flat Washer	2	M10 (Accessory)
14	Sim Ring	2	—
15	Round Head Screw	1	M4x8
16	Cable clip	1	—
17	Flat Washer	1	—

Features

- Since the detection lever moves parallel, the detection switch is activated regardless of vertical variation of the panel position.
- Position alignment and adjustment of the gauge mounting surface, the lever length and the lever support point are not required.
- Since the lower end of the detection lever moves almost horizontally, machining of the step between the die face and the gauge mounting surface is approx. 3 mm. It is great reduction of machining hours.
- Cable length is 5 m.

