

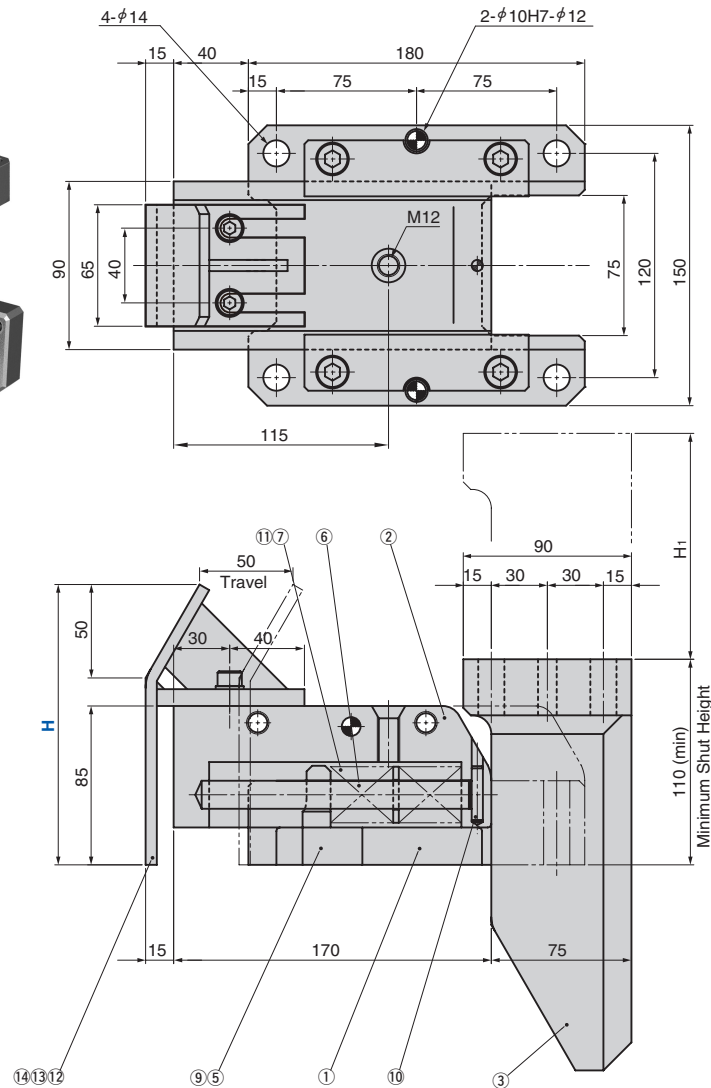
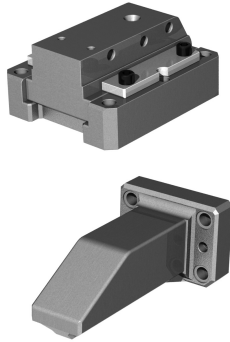
Side Gauge

Cam Type

Gauge

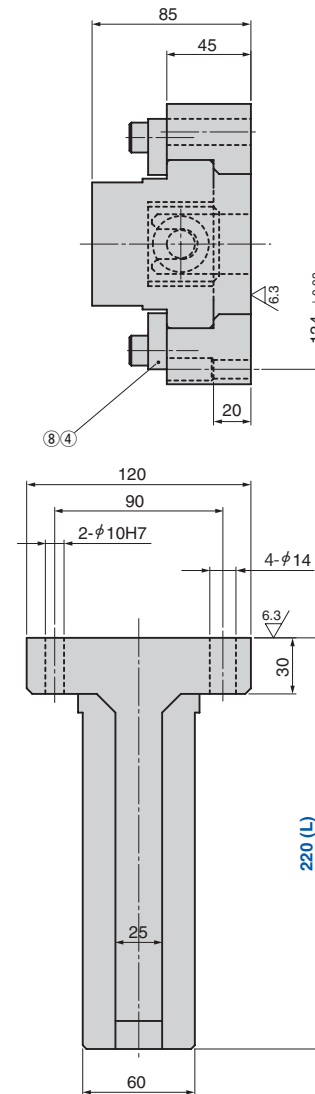
SGCM

CAD
FILE

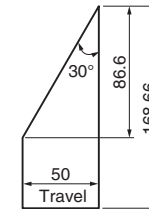


This figure shows SGCM with gauge.

Catalog No.	L	H	Spring load [N]		H ₁
			Initial load	Final load	
SGCM	220	150	141.5	686.0	168.66
		200			
		250			



● Cam Diagram



No.	Description	Qty	Material and Remark
1	Base	1	Cast Iron
2	Slider	1	SO#50F
3	Driver	1	Cast Iron
4	Upper Plate	2	Steel
5	Spring Stopper	1	Steel
6	Spring Guide Pin	1	Steel
7	Spring	2	TF30x65
8	Hexagon Socket Head Bolt	4	M10x25
9	Set Bolt	1	M6x10
10	Dowel with Female Thread	1	φ6x30
11	Washer	1	Steel
12	Gauge Plate	1	Steel
13	Washer	2	M8
14	Hexagon Socket Head Bolt	2	M8x20



Without gauge

Catalog No.	L
SGCM	220

With gauge

Catalog No.	S	H
SGCM	220	200