

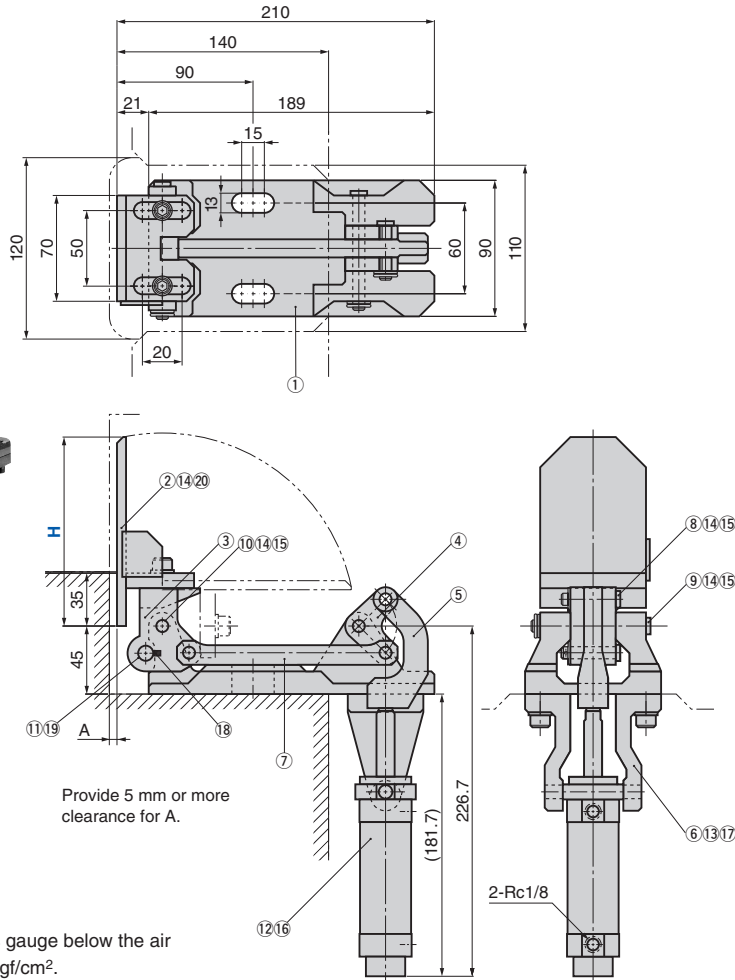
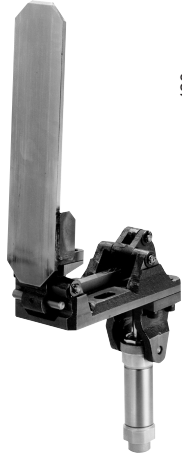
DA Gauge

Swivel Type

Gauge

DART

CAD
FILE



⚠ Do not use this gauge below the air pressure of 4 kgf/cm².

No.	Description	Qty	Material and Remark
1	Gauge Base	1	Cast Iron
2	Stopper Plate	1	Steel
3	Gauge Bracket	1	Cast Iron
4	Joint	1	Cast Iron
5	Arm	1	Cast Iron
6	Cylinder Support	2	Cast Iron
7	Rod	1	Steel
8	Joint Pin (S)	3	Steel
9	Joint Pin 1	1	Steel
10	Joint Pin 2	1	Steel

No.	Description	Qty	Material and Remark
11	Stopper Pin	1	Steel
12	Air Cylinder	1	SMC (φ 32)
13	Hexagon Socket Head Bolt	4	M8x25
14	Washer	7	M8
15	Cotter Pin	5	φ 2x16
16	Cotter Pin	1	φ 3x30
17	Spring Washer	4	M8
18	Stopper	2	φ 8x6
19	Hexagonal Socket Set Screw	1	M6x8
20	Hexagon Socket Head Bolt	2	M8x20

Catalog No.	H
	75
	100
	125
DART	150
	175
	200
	225
	250



Catalog No.	H
DART	150