

# Coil Support

CAM TYPE

CAD  
FILE

STSC

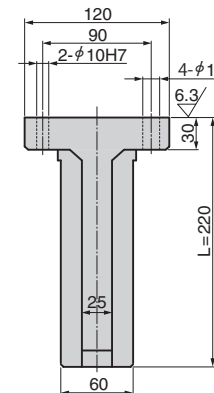
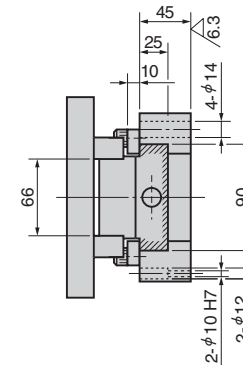
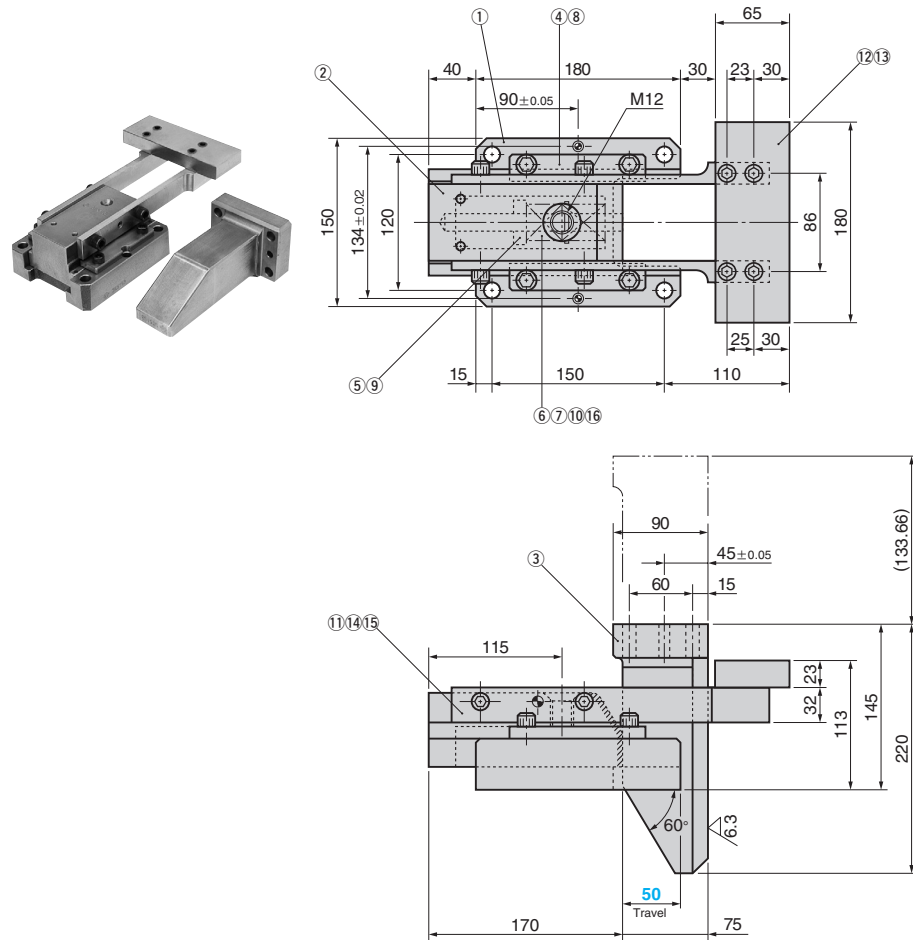
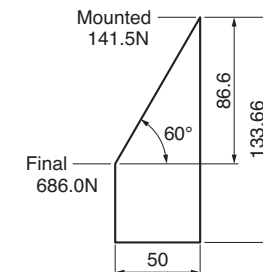


Table of Components

No.	Description	Qty	Material and Remark
①	Base	1	FC250
②	Slider	1	FC250
③	Driver	1	FC250
④	Upper Plate	2	SS400
⑤	Spring Stopper	1	SS400
⑥	Guide Pin	1	SS400
⑦	Spring	2	SWOSC-V TF30-65
⑧	Hexagon Socket Head Bolt	4	SCM435 M10×25
⑨	Set Screw	1	SCM435 M6×10
⑩	Dowel Pin with Female Thread	1	SUJ2 φ6×30(m6)
⑪	Arm	R/L1	SS400
⑫	Plate	1	SS400
⑬	Hexagon Socket Head Bolt	4	SCM435 M10×40
⑭	Hexagon Socket Head Bolt	4	SCM435 M12×35
⑮	Dowel pin	2	SUJ2 φ10×40
⑯	Washer	1	S45C

Spring Diagram

- Spring used TF30-65
- Spring constant 21.78N/mm (2.22kgf/mm)



Order

Catalog No.

STSC

S

50

# Coil Support

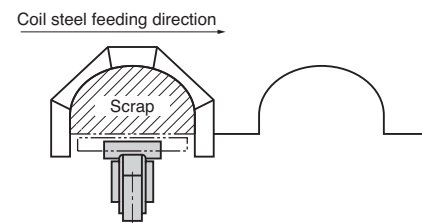
CAM TYPE

CAD  
FILE



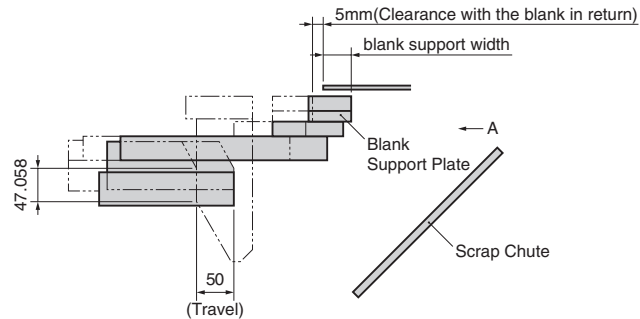
## Coil support cam type means:

The cam type coil support is used to secure the space for scrap machining. This corrects deflection of a blank sheet to prevent hitting with a cutter.



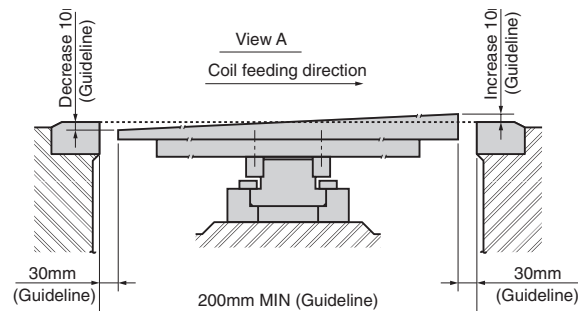
## ■ For Operation

- Set the position of the blank and the coil support.
- The guideline of the clearance between the blank in return (pressing) and the support plate is 5mm.



## ● Standard for use of Coil Support

- When the distance between cutters is 200mm or more and the spring type coil support cannot be used, use this cam type.
- The guideline of distance between the cutter and the blank support plate is 30mm.



⚠ The blank support plate should be manufactured by customers according to the blanking die specification.

📄 Refer to the next page for the standard table.

This page  
intentionally  
left blank