

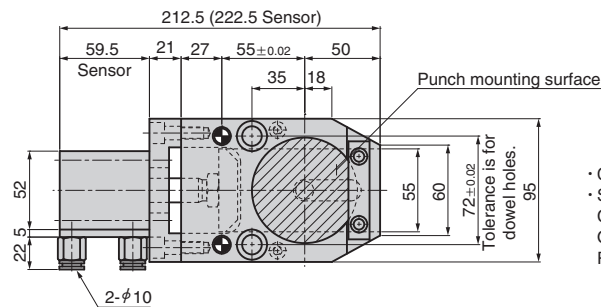
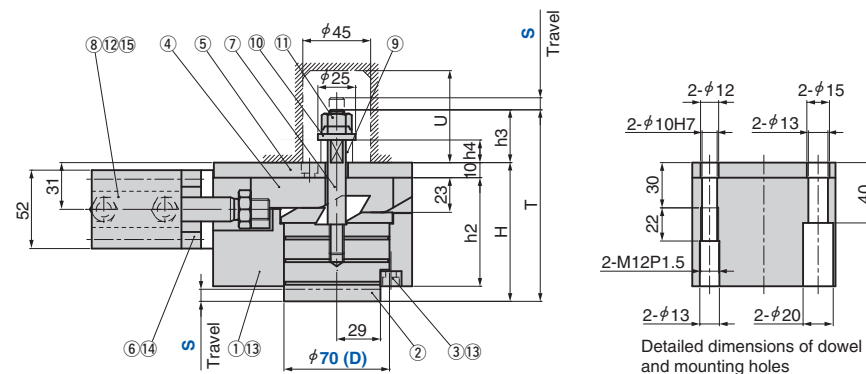
Removable Punch Retainer Unit

Air Type

Pierce Components

SHPUC70

CAD
FILE



- Cylinder, driving pressure Min 0.5 MPa
- Sensor Specification
Contact, 2-wire type A93L (SMC)
Operating voltage DC12/24V
Reed length 3 m

No.	Description	Qty	Material and Remark
1	Slide Casing	1	Steel
2	Float Pin	1	Steel
3	Key	1	Steel
4	Slide Plate	1	Steel
5	Backing Plate	1	Steel
6	Block	1	Steel
7	Stud Bolt	1	Steel
8	Air Cylinder (with out Sensor)	1	SMC (φ 40)
	Air Cylinder (Sensor)	1	SMC (φ 40)

No.	Description	Qty	Material and Remark
9	Spring	1	TR21-30 (8st) , TR21-45 (12st)
10	Washer	1	Steel
11	Hard Lock Nut	1	M10
12	Hexagon Socket Head Bolt	4	M5x60
13	Hexagon Socket Head Bolt	4	M6x15
14	Hexagon Socket Head Bolt	2	M8x25
15	Male Connector	2	SMC (h10)
16	Dowel with Female Thread	2	φ 10x60 (Accessories)
17	Screw Plug	2	M12x1.5 (Accessories)

Travel S	h2	h3	h4	H	T	U
8	72	35	15	92	127	55
12	76	42.5	22.5	100	142.5	60

Catalog No.	D	Travel S	Spring			Working force kN	Tool Installation Weight kg	Weight kg
			Initial Load N	Final Load N	Model			
SHPUC	70	8	96	207	TR21-30	54	5	8.1
		12	97	207	TR21-45	31		8.4



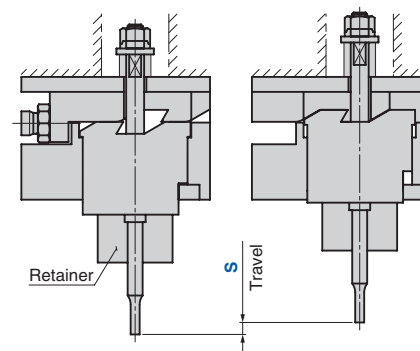
Catalog No.	D	—	S	—	Option
SHPUC	70	—	8	—	SA
SHPUC	70	—	8	—	SA-LHC



Option Code	Specification
SA	Cylinder Sensor included
LHC	The accompanying Pipe Joint is changed to L type

Guideline for Use

- The air ports can be easily changed by rotating the cylinder mounting position.
- The limit number for joint operation is 4 units. If you want to use the unit in joint operation, please contact our sales representative.



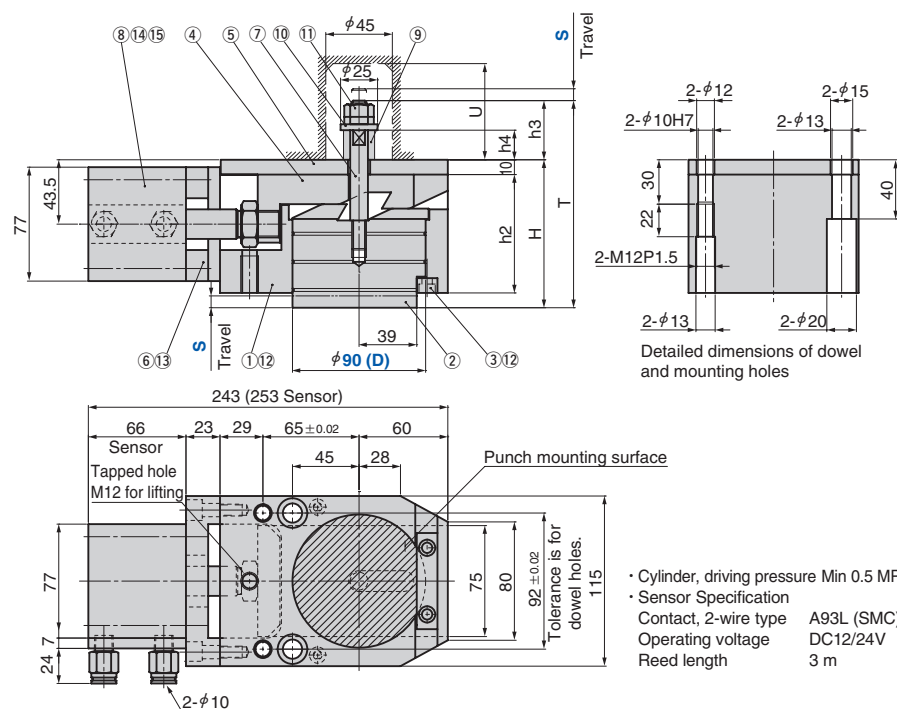
Removable Punch Retainer Unit

Air Type

Pierce Components

SHPUC90

CAD
FILE



No.	Description	Qty	Material and Remark
1	Slide Casing	1	Steel
2	Float Pin	1	Steel
3	Key	1	Steel
4	Slide Plate	1	Steel
5	Backing Plate	1	Steel
6	Block	1	Steel
7	Stud Bolt	1	Steel
8	Air Cylinder (with out Sensor)	1	SMC (φ 63)
	Air Cylinder (Sensor)	1	SMC (φ 63)

No.	Description	Qty	Material and Remark
9	Spring	1	TR21-40 (8st) , TR21-55 (12st)
10	Washer	1	Steel
11	Hard Lock Nut	1	M10
12	Hexagon Socket Head Bolt	4	M6x15
13	Hexagon Socket Head Bolt	4	M8x25
14	Hexagon Socket Head Bolt	4	M8x65
15	Male Connector	2	SMC (φ 10)
16	Dowel with Female Thread	2	φ 10x60 (Accessories)
17	Screw Plug	2	M12x1.5 (Accessories)

Travel S	h2	h3	h4	H	T	U
8	80	40	20	100	140	55
12	84	47	27	108	155	60

Catalog No.	D	Travel S	Spring			Working force kN	Tool Installation Weight kg	Weight kg
			Initial Load N	Final Load N	Model			
SHPUC	90	8	124	207	TR21-40	64	6	15.2
		12	120	210	TR21-55	47		15.4



Order

Catalog No.	D	S	Option
SHPUC	90	8	- SA
SHPUC	90	8	- SA - LHC



Option

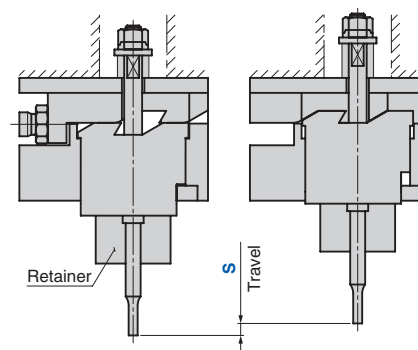
Option Code	Specification
SA	Cylinder Sensor included
LHC	The accompanying Pipe Joint is changed to L type

Guideline for Use

- The air ports can be easily changed by rotating the cylinder mounting position.
- The limit number for joint operation is 4 units. If you want to use the unit in joint operation, please contact our sales representative.



Example



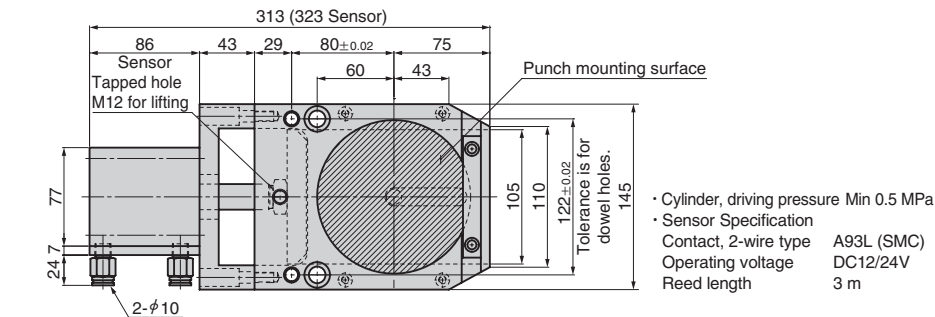
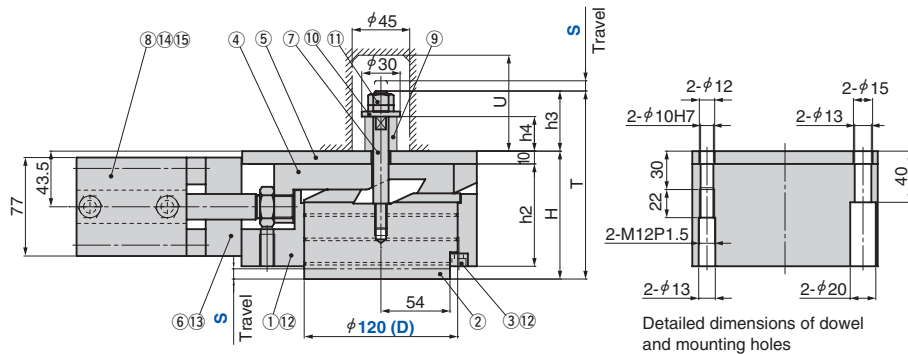
Removable Punch Retainer Unit

Air Type

Pierce Components

SHPUC120

CAD
FILE



No.	Description	Qty	Material and Remark
1	Slide Casing	1	Steel
2	Float Pin	1	Steel
3	Key	1	Steel
4	Slide Plate	1	Steel
5	Backing Plate	1	Steel
6	Block	1	Steel
7	Stud Bolt	1	Steel
8	Air Cylinder (with out Sensor)	1	SMC (φ 63)
	Air Cylinder (Sensor)	1	SMC (φ 63)

No.	Description	Qty	Material and Remark
9	Spring	1	TF25-45 (8st) , TF25-60 (12st)
10	Washer	1	Steel
11	Hard Lock Nut	1	M10
12	Hexagon Socket Head Bolt	6	M6x15
13	Hexagon Socket Head Bolt	4	M8x25
14	Hexagon Socket Head Bolt	4	M8x85
15	Male Connector	2	SMC (φ 10)
16	Dowel with Female Thread	2	φ 10x60 (Accessories)
17	Screw Plug	2	M12x1.5 (Accessories)

Travel S	h2	h3	h4	H	T	U
8	80	47	27	100	147	60
12	84	55	35	108	163	75

Catalog No.	D	Travel S	Spring			Working force kN	Tool Installation Weight kg	Weight kg
			Initial Load N	Final Load N	Model			
SHPUC	120	8	218	392	TF25-45	179	10	21.5
		12	212	408	TF25-60	158		22.1



Catalog No.	D	S	Option
SHPUC	120	8	SA
SHPUC	120	8	SA-LHC



Option Code	Specification
SA	Cylinder Sensor included
LHC	The accompanying Pipe Joint is changed to L type

Guideline for Use

- The air ports can be easily changed by rotating the cylinder mounting position.
- The limit number for joint operation is 4 units. If you want to use the unit in joint operation, please contact our sales representative.

