

Pierce Selector [Overview]

PSR Series

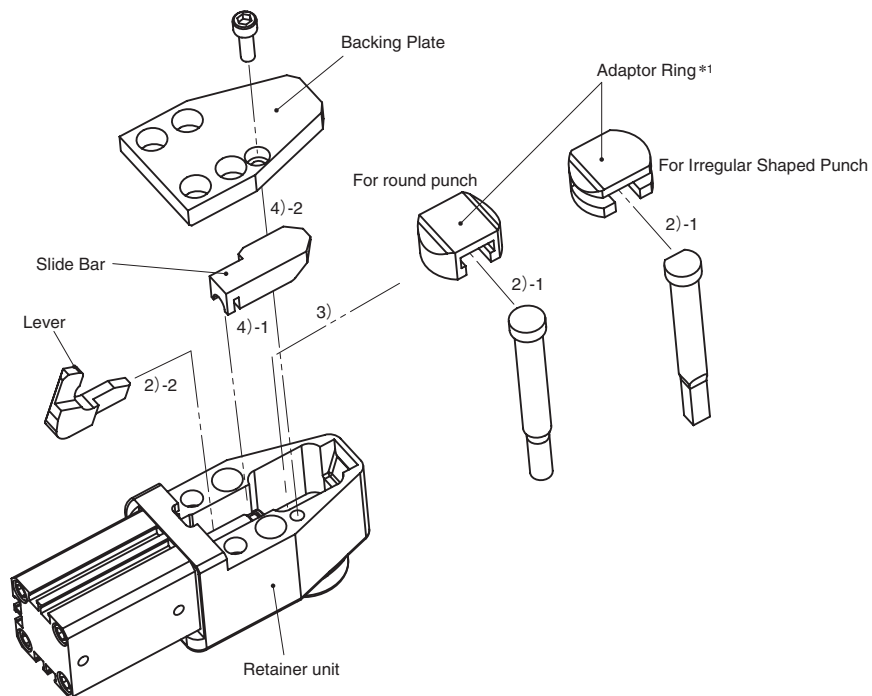
Pierce Components

■Mounting a punch

- 1) Remove the Backing Plate and Slide Bar to pull out the Adaptor Ring.
- 2) Insert Punch into Adaptor Ring.
- 3) Reassemble the Adaptor Ring with the inserted Punch into Retainer Unit.

When using an Irregular Shaped Punch, reassemble the Adaptor Ring so the chamfer is in the rear (Air cylinder side). It cannot be reassembled in reverse direction.

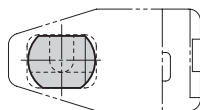
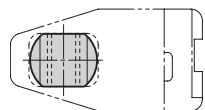
- 4) Reassemble the Slide Bar and Backing Plate.



*1 Adaptor ring specification

〈For round punch〉

〈For Irregular Shaped Punch〉



When using an irregular shaped punch, the clearances for the piercing ring and retainer main body must be correctly controlled. Check the alignment marks before setting in place.

This page intentionally left blank

Pierce Selector

PSR Series

Pierce Components

Without Sensor

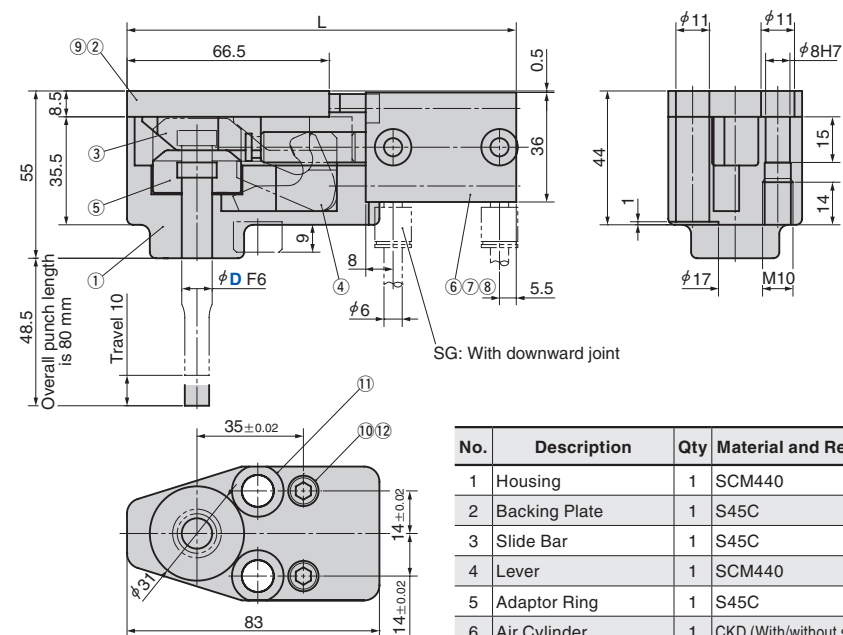
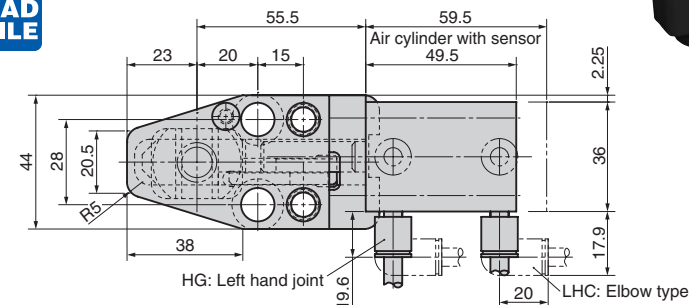
PSR (For Round Punch)

PSRH (For Irregular Shaped Punch)

With Sensor

PSRS (For Round Punch)

PSRSH (For Irregular Shaped Punch)



No.	Description	Qty	Material and Remark
1	Housing	1	SCM440
2	Backing Plate	1	S45C
3	Slide Bar	1	S45C
4	Lever	1	SCM440
5	Adaptor Ring	1	S45C
6	Air Cylinder	1	CKD (With/without sensor)
7	Joint	2	CKD (GWS6-M5)
8	Hexagon Socket Head Bolt	4	M5x50 (60)
9	Hexagon Socket Head Bolt	1	M5x15
10	Screw Plug	2	M10x10
11	Hexagon Socket Head Bolt	2	M10x65
12	Dowel	2	φ 8x40

- Cylinder, driving pressure Min 0.4 MPa
- Sensor Specification
- Contact, 2-wire type
- Operating voltage DC24V AC100V
- Reed length 3 m

Catalog No.	D	Joint position G	L		Weight [kg]	
			Without Sensor	With Sensor	Without Sensor	With Sensor
PSR	10	HG (Left joint)				
PSRH	13	MG (Right joint)	128	138	1.0	1.1
PSRS	16	SG (Downward)				
PSRSH						

Joint position: HG and SG are as shown in the diagram on the left page. The positions for MG are in a symmetric positions of HG shown in the diagram on the left page.



Order

Catalog No.	D	G	Option
PSR	13	HG	
PSR	13	HG	LHC



Option

Option Code	Specification
LHC	The pipe joint is changed to the L (elbow) type. (GWL6-M5).

Design Guideline

When using PSRS type (PSR series with sensor) next to each other, secure a space with the dimensions below.

