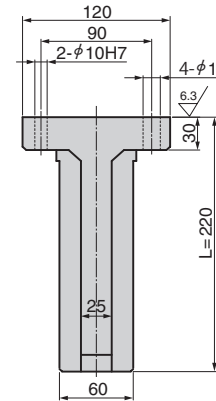
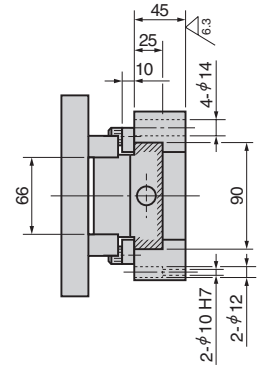
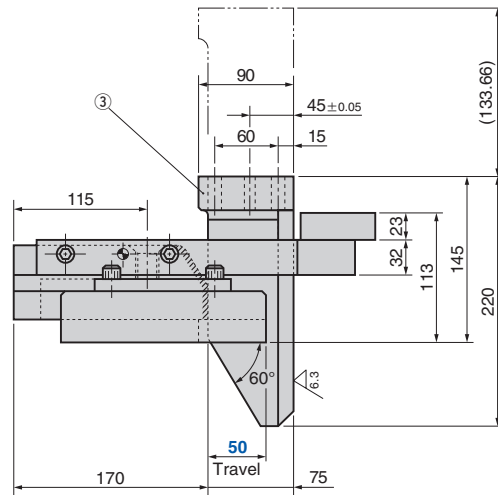
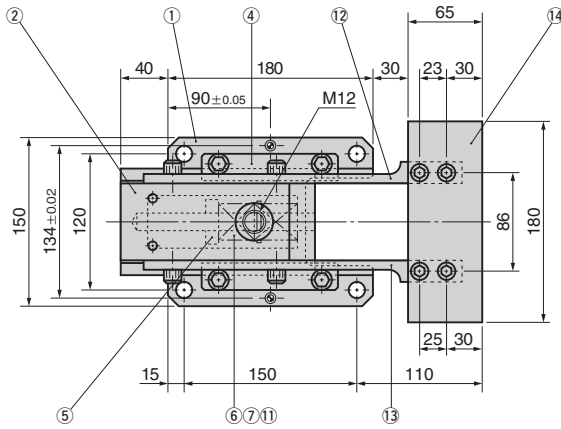
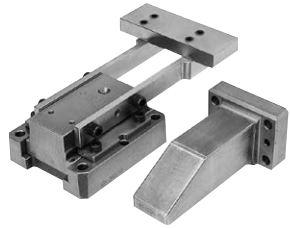


Coil Support Cam Type

Blanking Die Components

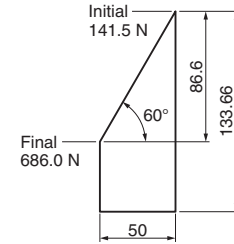
STSC

CAD FILE



Spring Diagram

- Spring Model TF30-65
- Spring constant 21.78 N/mm (2.22 kgf/mm)



| No. | Description | Qty | Material and Remark |
|-----|------------------|-----|-------------------------|
| 1 | Base | 1 | Cast Iron |
| 2 | Cam Slider | 1 | Cast Iron with Graphite |
| 3 | Cam Driver | 1 | Cast Iron |
| 4 | Cam Upper Plate | 2 | Steel |
| 5 | Spring Stopper | 1 | Steel |
| 6 | Spring Guide Pin | 1 | Steel |
| 7 | Spring | 2 | TF30x65 |
| 11 | Guide Washer | 1 | Steel |
| 12 | Arm-L | 1 | Steel |
| 13 | Arm-R | 1 | Steel |
| 14 | Plate | 1 | Steel |

Bolts, nuts, dowels and washers for assembly are not indicated.



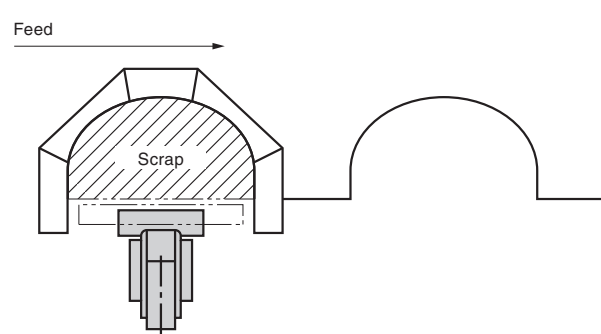
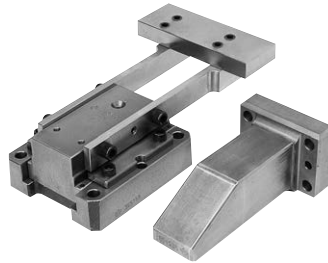
Catalog No. **S**
STSC **50**

Coil Support Cam Type [Overview]

Blanking Die Components

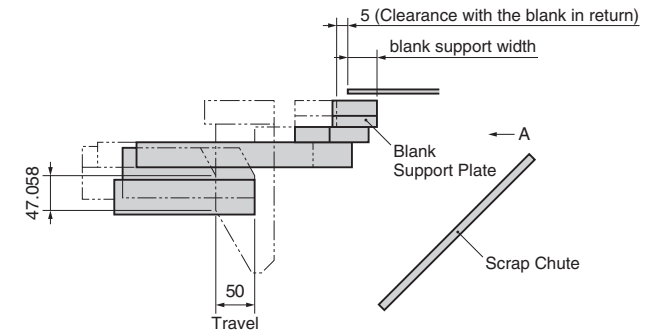
Coil support cam type means:

The cam type coil support is used to secure the space for scrap machining.
This corrects deflection of a blank sheet to prevent hitting with a cutter.



DESIGN ONLY

- Set the position of the blank and the coil support.
 - The guideline of the clearance between the blank in return (pressing) and the support plate is 5 mm.
 - The blank support plate should be manufactured by customers according to the blanking die specification.



- Standard for use of Coil Support
 - When the distance between cutters is 200 mm or more and the spring type coil support cannot be used, use this cam type.
 - The guideline of distance between the cutter and the blank support plate is 30 mm.

