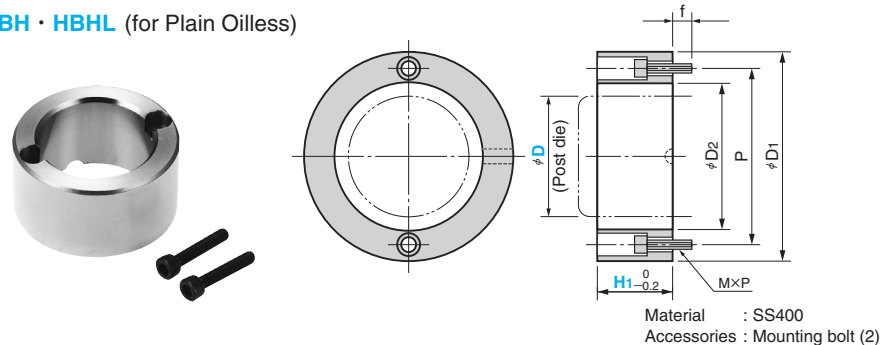


# Height Block · Stop Block

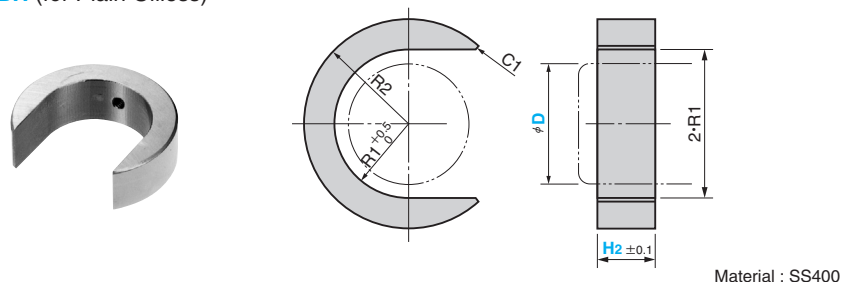
FLAT TYPE

CAD  
FILE

HBH · HBHL (for Plain Oilless)



SBH (for Plain Oilless)



D	D1	D2 H	P	MXP	f	R1 H
25	46	29	37	M4×0.7	10	14.5
32	56	37	45			18.5
38	72	43	60	M5×0.8		21.5
50	86	56	72	M6×1.0	12	28
60	112	66	92			33
80	140	88	116	M8×1.25		44

Catalog No.	D	H1 Increments of 5 mm	Safety color
HBH	25	10 to 50	
	32	10 to 50	
	38	15 to 50	R (Red)
	50	20 to 50	Y (Yellow)
	60	20 to 50	N (None)
	80	20 to 50	

Catalog No.	D	H2 Increments of 5 mm	Safety color
SBH	25	10 to 40	
	32	10 to 40	
	38	10 to 50	R (Red)
	50	10 to 50	Y (Yellow)
	60	10 to 50	N (None)
	80	10 to 50	

Catalog No.	D	H1 Increments of 1 mm	Safety color
HBHL	25	11 to 49	
	32	11 to 49	R (Red)
	38	16 to 49	Y (Yellow)
	50	21 to 49	N (None)
	60	21 to 49	
	80	21 to 49	

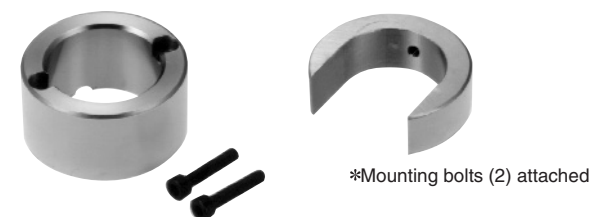
⚠ To determine H1 size, sizes that can be specified in HBH are excluded.

Order	Catalog No.	D	H1 or H2	Safety color	Option
	HBH	38	25	R	
	HBHL	38	16	N	
	SBH	38	15	Y	TN

Option Refer to page 89 to 90 for groove machining and chain installation machining.

## Height Block Set

HBHS (for Plain Oilless, HBH + SBH)



Catalog No.	D	H1 Increments of 5 mm	H1 Safety color	H2 Increments of 5 mm	H2 Safety color
HBHS	25	10 to 50		10 to 40	
	32	10 to 50		10 to 40	
	38	10 to 50	R (Red)	10 to 50	R (Red)
	50	20 to 50	Y (Yellow)	10 to 50	Y (Yellow)
	60	20 to 50	N (None)	10 to 50	N (None)
	80	20 to 50		10 to 50	

Order	Catalog No.	D	H1	H1 Safety color	H2	H2 Safety color	Option
	HBHS	50	30	R	20	Y	TN

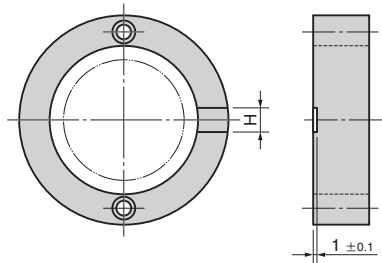
Option Refer to page 89 to 90 for groove machining and chain installation machining.

# Options

## ALTERNATIVE METHODS

### ■Groove Machining

—TN (Applicable to HBH and HBHS)



D	H
25 to 32	10
38 to 80	15

— TN

A groove to check the dead bottom center is machined.



Order

Catalog No.	D	H <sub>1</sub>	Safety color	Option
HBF	50	35	Y	TN

### ■Machining for Standard Chain Installation

— S (Applicable to HBHS)

HBHS



\*Mounting bolts (2) attached

— S

A height block is connected to a stock with a chain.



Order

Catalog No.	D	H <sub>1</sub>	H <sub>2</sub>	Safety color	Option
HBHS	38	25	20	R	S

### ■Machining for Installation of Heavy-Duty Chain

— HS (Applicable to HBHS and SBH)



Dimension H<sub>1</sub>, H<sub>2</sub> shall be applied to 20mm or more.

— HS

A height block is connected to a stock with a strong chain.

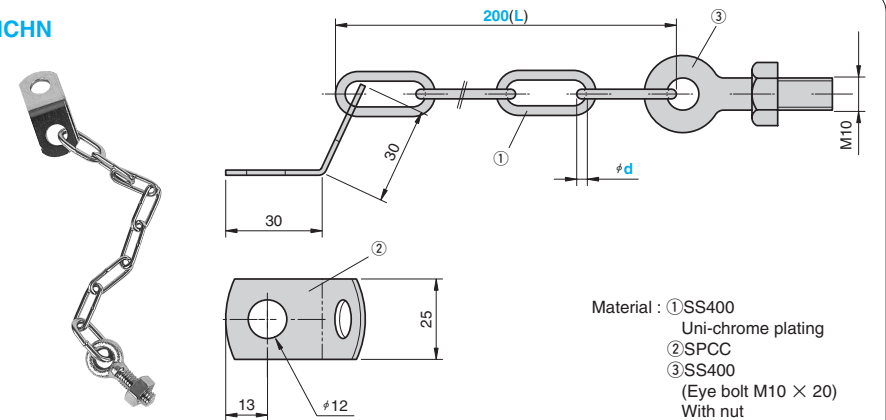


Order

Catalog No.	D	H <sub>1</sub>	H <sub>2</sub>	Safety color	Option
HBHS	38	25	20	R	HS

### ■Heavy-Duty Chain

HCHN



Catalog No.	d	L
HCHN	3	200



Order

Catalog No.	d	L
HCHN	3	200