

Guide Bar [Overview]

Wear Plate Type

Die Guide Components

■ GBTP/GBTX, Guide Bar with Removable Wear Plate

- Remove and replace the wear plate on the sliding surface.
- Clearance adjustment against the die can be done easily because the wear plate is easily detached.
- Wear plates are changeable, and maintenance can be done easily.

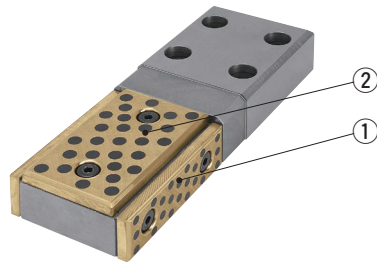
■ How to adjust dimensional accuracy

- Grind the back side, the non-sliding side, when the wear plate needs to be adjusted. Use a shim for thickness adjustment.

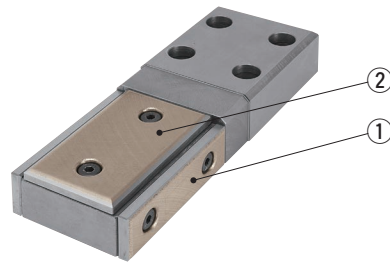
■ Replacement of Wear Plate

- Please order based on the model number for GBTP (TWP) or GBTX (TWX) described in the chart on the next page.

〈Attachment Location of GBTP Wear Plate〉



〈Attachment location of GBTX Wear Plate〉



■ When Using This Product

- Please use a shim plate SHMS on Page 123, specifically for the wear plate, for shim-up.

■ GBTP Wear Plate

Catalog No.	Location	Model #	Qty
GBTP100-230	①	TWP38-75	2
	②	TWP75-75	1
GBTP100-280	①	TWP38-125	2
	②	TWP75-125	1
GBTP100-330	①	TWP38-125	2
	②	TWP75-125	1
GBTP100-390	①	TWP38-150	2
	②	TWP75-150	1
GBTP120-230	①	TWP38-75	2
	②	TWP75-100	1
GBTP120-280	①	TWP38-125	2
	②	TWP100-125	1
GBTP120-330	①	TWP38-125	2
	②	TWP100-125	1
GBTP120-390	①	TWP38-150	2
	②	TWP100-150	1
GBTP150-280	①	TWP38-125	2
	②	TWP125-125	1
GBTP150-330	①	TWP38-125	2
	②	TWP125-125	1
GBTP150-390	①	TWP38-150	2
	②	TWP125-150	1
GBTP150-430	①	TWP38-150	2
	②	TWP125-150	1
GBTP180-280	①	TWP48-125	2
	②	TWP125-150	1
GBTP180-330	①	TWP48-125	2
	②	TWP125-150	1
GBTP180-390	①	TWP48-150	2
	②	TWP150-150	1
GBTP180-430	①	TWP48-150	2
	②	TWP150-150	1

▶ Refer to page 115 for details on Wear Plate TWP.

■ GBTX Wear Plate

Catalog No.	Location	Model #	Qty
GBTX100-230	①	TWX38-75	2
	②	TWX75-75	1
GBTX100-280	①	TWX38-125	2
	②	TWX75-125	1
GBTX100-330	①	TWX38-125	2
	②	TWX75-125	1
GBTX100-390	①	TWX38-150	2
	②	TWX75-150	1
GBTX120-230	①	TWX38-75	2
	②	TWX75-100	1
GBTX120-280	①	TWX38-125	2
	②	TWX100-125	1
GBTX120-330	①	TWX38-125	2
	②	TWX100-125	1
GBTX120-390	①	TWX38-150	2
	②	TWX100-150	1
GBTX150-280	①	TWX38-125	2
	②	TWX125-125	1
GBTX150-330	①	TWX38-125	2
	②	TWX125-125	1
GBTX150-390	①	TWX38-150	2
	②	TWX125-150	1
GBTX150-430	①	TWX38-150	2
	②	TWX125-150	1
GBTX180-280	①	TWX48-125	2
	②	TWX125-150	1
GBTX180-330	①	TWX48-125	2
	②	TWX125-150	1
GBTX180-390	①	TWX48-150	2
	②	TWX150-150	1
GBTX180-430	①	TWX48-150	2
	②	TWX150-150	1

▶ Refer to page 109 for details on Wear Plate TWX.

Guide Bar

Wear Plate Type

Die Guide Components

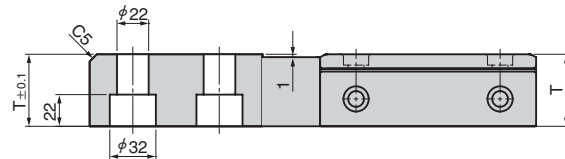
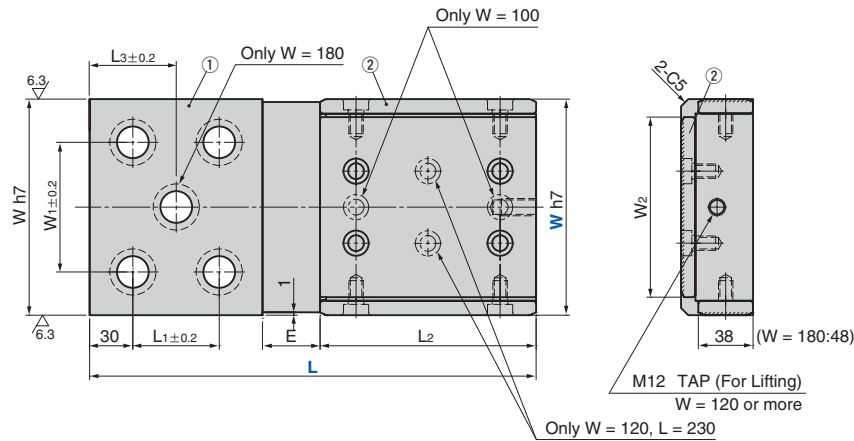
GBTP (Bronze Plate Type)

CAD FILE



GBTX (Sintered Plate Type)

CAD FILE



● Sliding Direction



(Material) ① Main body SS400
 ② Wear plate GBTB TWP SO#50SP2
 ③ Wear plate GBTX TWX SO#220

Catalog No.	W	L	W	h7	W ₁	W ₂	L ₁	L ₂	L ₃	T	E	
100	100	230	100	0 -0.035	60	75	60	75	45	35	35	
		280						125				
		330						100				125
		390						120				150
120	120	230	120	0 -0.040	90	100	60	75	50	35	35	
		280						125				
		330						100				125
		390						120				150
150	150	280	150	0 -0.040	125	125	60	125	55	45	45	
		330						100				125
		390						120				150
		430						140				150
180	180	280	180	0 -0.040	120	150	60	125	55	45	45	
		330						100				125
		390						120				150
		430						140				150



Order

Catalog No.	W	L
GBTP	100 - 280	
GBTX	150 - 330	

When Using This Product

- When the sliding surface is damaged by scratches or dents, it can be repaired by just replacing each plate.
- When replacing a plate, the dimensions are not necessarily the initial dimensions. Adjust the dimensions by grinding or adding shims before use. Also, when grinding the plate, grind the bottom surface.