

Height Block · Stock Block Set

Flat Type for Plain Oilless

Die Guide Components

HBHS (HBH+SBH)



Catalog No.	D	HBH				Safety color	SBH				Safety color											
		H1	H1	H1	H1		H2	H2	H2	H2												
HBHS	25	10	15	20	25	30	35	40	45	50	R (Red) Y (Yellow) N (None)	10	15	20	25	30	35	40	R (Red) Y (Yellow) N (None)			
	32	10	15	20	25	30	35	40	45	50		10	15	20	25	30	35	40				
	38	10	15	20	25	30	35	40	45	50		10	15	20	25	30	35	40		45	50	
	50				20	25	30	35	40	45		50	10	15	20	25	30	35		40	45	50
	60				20	25	30	35	40	45		50	10	15	20	25	30	35		40	45	50
80				20	25	30	35	40	45	50	10	15	20	25	30	35	40	45	50			



Catalog No.	D	H1	H1 Safety color	H2	H2 Safety color	Option
HBHS	50	30	R	20	Y	S



Option Code	Specification
TN	A groove to check the dead bottom center is machined.
S	A height block is connected to a stock with a chain.
HS	A height block is connected to a stock with a strong chain. Dimension H1, H2 shall be applied to 20 mm or more.

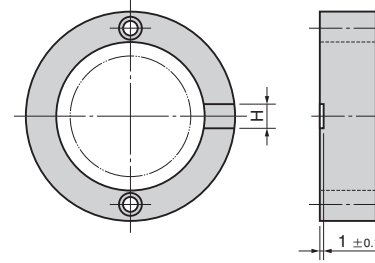
Option

Die Guide Components

■ Groove Machining

—TN (Applicable to HBH and HBHS)

A groove to check the dead bottom center is machined.



D	H
25~32	10
38~80	15

■ Machining for Standard Chain Installation

—S (Applicable to HBHS)

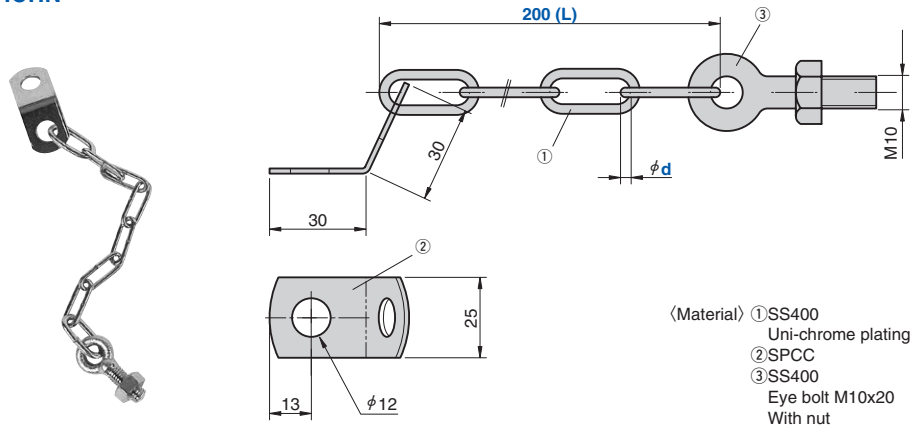
A height block is connected to a stock with a chain.



Heavy-Duty Chain

Die Guide Components

HCHN



(Material) ①SS400
Uni-chrome plating
②SPCC
③SS400
Eye bolt M10x20
With nut

Catalog No.	d	L
HCHN	3	200

Order	Catalog No.	d	-	L
	HCHN	3	-	200

Option

Die Guide Components

■Machining for Installation of Heavy-Duty Chain

—HS (Applicable to HBHS and SBH)

A height block is connected to a stock with a strong chain.
Dimension H1, H2 shall be applied to 20 mm or more.

