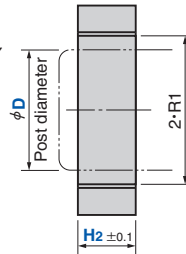
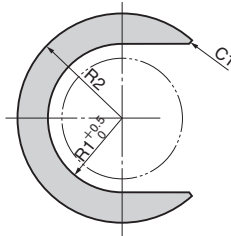
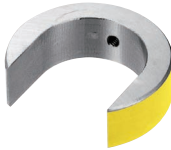


# Stock Block

Flat Type for Plain Oilless

## Die Guide Components

SBH



〈Material〉 SS400

Die Guide  
Components

Catalog No.	D	H <sub>2</sub>	Safety color	R1	R2
	25	10 15 20 25 30 35 40		14.5	23
	32	10 15 20 25 30 35 40		18.5	28
SBH	38	10 15 20 25 30 35 40 45 50	R (Red) Y (Yellow) N (None)	21.5	36
	50	10 15 20 25 30 35 40 45 50		28	43
	60	10 15 20 25 30 35 40 45 50		33	56
	80	10 15 20 25 30 35 40 45 50		44	70



Order

Catalog No.	D	—	H <sub>2</sub>	Safety color	—	Option
SBH	38	—	25	R	—	TN



Option

Option Code	Specification
HS	A height block is connected to a stock with a strong chain. Dimension H2 shall be applied to 20 mm or more.

# Option

## Die Guide Components

### ■ Machining for Installation of Heavy-Duty Chain

—HS (Applicable to HBHS and SBH)

A height block is connected to a stock with a strong chain.

Dimension H1, H2 shall be applied to 20 mm or more.

