

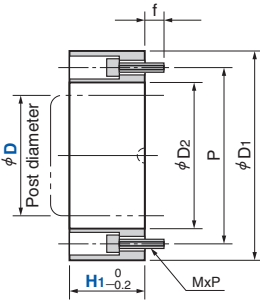
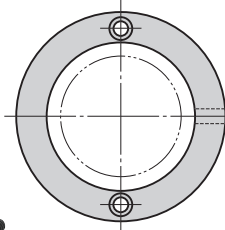
# Height Block

## Flat Type for Plain Oilless

### Die Guide Components

**HBH** (H<sub>1</sub> 5 mm increments)

**HBHL** (H<sub>1</sub> 1 mm increments)



(Material) SS400  
(Accessories) Mounting bolt (2)

D	D <sub>1</sub>	D <sub>2</sub>	P	MxP	f
25	46	29	37	M4x0.7	10
32	56	37	45		
38	72	43	60	M5x0.8	
50	86	56	72	M6x1.0	12
60	112	66	92	M8x1.25	
80	140	88	116		

Catalog No.	D	H <sub>1</sub>	Safety color	Catalog No.	D	H <sub>1</sub> 1 mm increments	Safety color
HBH	25	10 15 20 25 30 35 40 45 50	R (Red) Y (Yellow) N (None)	HBHL	25	11 ~ 49	R (Red) Y (Yellow) N (None)
	32	10 15 20 25 30 35 40 45 50			32	11 ~ 49	
	38	15 20 25 30 35 40 45 50			38	16 ~ 49	
	50	20 25 30 35 40 45 50			50	21 ~ 49	
	60	20 25 30 35 40 45 50			60	21 ~ 49	
	80	20 25 30 35 40 45 50			80	21 ~ 49	

To determine H<sub>1</sub> size, sizes that can be specified in HBH are excluded.



Order

Catalog No.	D	H <sub>1</sub>	Safety color	Option
HBH	38	25	R	
HBHL	38	16	N	- TN



Option

Option Code	Specification
TN	A groove to check the dead bottom center is machined.

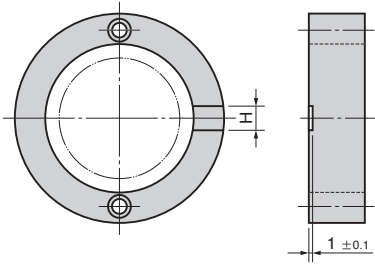
# Option

## Die Guide Components

### ■ Groove Machining

—TN (Applicable to HBH and HBHS)

A groove to check the dead bottom center is machined.



D	H
25~32	10
38~80	15

### ■ Machining for Standard Chain Installation

—S (Applicable to HBHS)

A height block is connected to a stock with a chain.

