

Urethane Storage Block Set

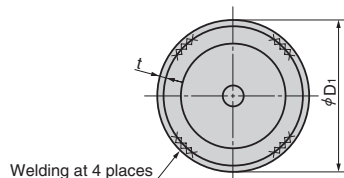
Die Setting Components

CAD FILE

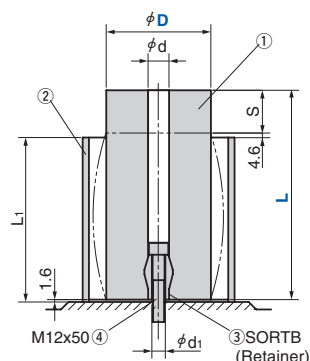
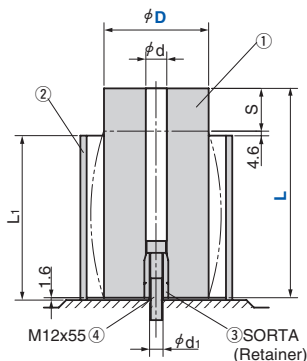
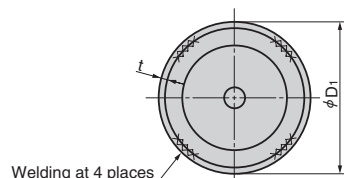


Retainers are fixed to urethane.

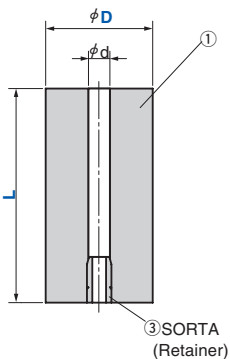
USPHA



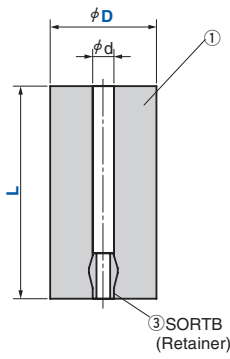
USPHB



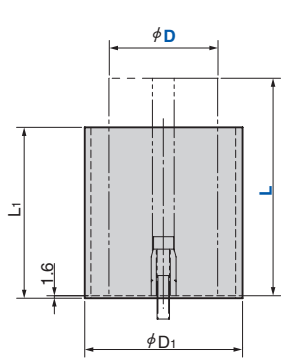
USA
USAT (①③SORTA)



USA
USATB (①③SORTB)



USPH (②)



(Material) Polyester type

(Material) Pipe

| Catalog No. | D | L | Safety Color | ① Urethane Spring | | | | ② Urethane Storage Pipe | | | |
|--------------------------|-----|-----|--------------|-------------------|------|-------|------|-------------------------|----------------|----------------|----------------|
| | | | | D | L | d | S | S=Lx20% F (kN) | D ₁ | L ₁ | d ₁ |
| USPHA USPHB USPH*1 | 70 | 110 | R (Red) | 70 | 110 | 22 | 22.0 | 89.1 | 85 | 13 | 2.8 |
| | | 140 | | | 140 | | | | | | |
| | 90 | 110 | | 22 | 35.0 | 114.3 | 109 | 3.2 | | | |
| | | 140 | | | | | | | 200 | | |
| | 100 | 200 | | 40 | 42.5 | 139.8 | 109 | 3.6 | | | |
| | | 140 | | | | | | | 200 | | |
| 110 | 140 | 40 | 53.9 | 139.8 | 109 | 3.6 | | | | | |
| | 200 | | | | | | | | | | |



Order

| Catalog No. | D | L | Safety Color |
|-------------|----|-----|--------------|
| USPHA | 90 | 200 | R |
| USPH | 70 | 110 | R |

*1 USPH110-140 are common standard with USPH100-140. When ordering USPH110-140, please instruct USPH100-140.

| Catalog No. | D | L | d |
|----------------------|-----|-----|----|
| USA USAT USATB | 70 | 110 | 22 |
| | | 140 | |
| | 90 | 140 | |
| | | 200 | |
| 100 | 140 | 200 | |
| | 140 | | |
| 110 | 200 | | |



Order

| Catalog No. | D | L |
|-------------|----|-----|
| USA | 70 | 140 |
| USATB | 90 | 200 |

Refer to page 1151 for storage methods. Refer to page 1191 for retainer.

Urethane Spring [Overview]

Pressure Source Components

Urethane spring USA and USX for press tools use polyester based cast urethane elastomer which is heat resistant. It is excellent in repeated compression. It also has high impact resilience, impact resistance, weather resistance, and load resistance. It is the optimum product for pad pressure source of press tools.



■ Features

- Since material is hard and elastic, it is excellent in impact resistance and shows a strong performance as a spring.

| Material Characteristics | | Performance Values |
|--------------------------|------|----------------------|
| Material | | Polyester Based |
| Hardness | | Shore A90° HRS45° |
| Color | | Navy blue |
| Tensile Strength | | 59 MPa |
| Modulus | 100% | 7.53 MPa |
| | 300% | 15.2 MPa |
| Elongation | | 510% |
| Tensile Strength | | 109 N/mm |
| Impact Resistance | | 28% |


■ Range of Application

| | Deflection Rate Limit for Operation | SPM Limit for Operation | Ambient Temperature Limit for Operation |
|-----|-------------------------------------|-------------------------|---|
| USA | 25% | 50SPM | 50°C |
| USX | 30% | 40SPM | |

Specification limit SPM varies depending on the deflection ratio. Please contact our sales representatives for details.

■ Storage

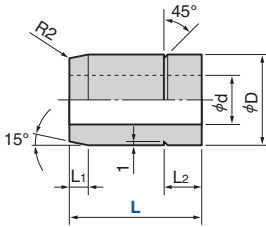
- In order to protect against ultraviolet rays, store away from direct sunlight.
 - Deterioration is faster under conditions of high temperature or humidity.
- We recommend putting a desiccant in the container and storing in as cool a location as possible.

 For use under high temperature and humidity conditions, we recommend URESTORO (P.1171), which has excellent hydrolysis performance.

Retainer, Spacer

Pressure Source Components

SORTA



(Material) SS400 or S25C

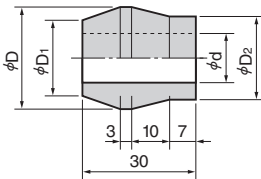
| Catalog No. | Nominal | L | D | d | L ₁ | L ₂ | Applicable Rubber Spring, Urethane Spring | |
|-------------|---------|----|----|----|----------------|----------------|---|--------|
| | | | | | | | Outer Diameter | Length |
| SORTA | 14 | 10 | 16 | 9 | 2 | 3 | 30, 40 | ~40 |
| | | 20 | | | 3 | 7 | 30~63 | 50~63 |
| | 20 | 30 | 22 | 13 | 5 | 10 | 60~ | 60~125 |
| | | 35 | 24 | | | | 70~100 | 60~200 |



Order

| | | | |
|-------------|---------|---|----|
| Catalog No. | Nominal | - | L |
| SORTA | 20 | - | 30 |

SORTB



(Material) SS400 or S25C

| Catalog No. | Nominal | D | D ₁ | D ₂ | d | Outer Diameter |
|-------------|---------|----|----------------|----------------|----|----------------|
| SORTB | 14 | 19 | 13 | 14 | 9 | 50 63 |
| | 22 | 27 | 20 | 22 | 13 | 80 100 |



When installing SORTB, set the straight part to the fixed surface side.



Order

| | |
|-------------|---------|
| Catalog No. | Nominal |
| SORTB | 14 |