

Distance Stop Block

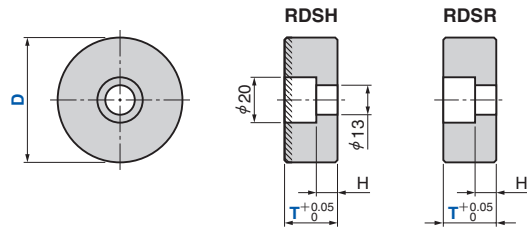
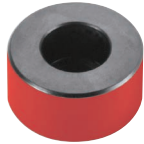
Round Type

Die Setting Components

RDSH (Hardened Type)

RDSR

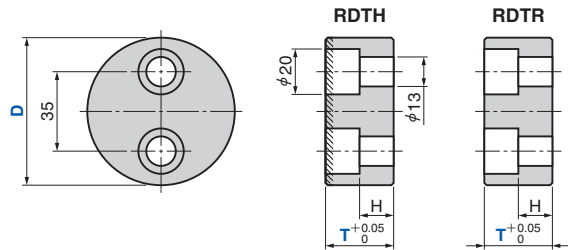
CAD
FILE



RDTH (Hardened Type)

RDTR

CAD
FILE



T	H
20	6
30~	15

〈Material〉 1045 (S45C)
 〈Hardness〉 HRC50~
 Hatched area to be Induction Hardened

Catalog No.	D	T	Safety Color
	40	20	
		30	
		20	
	50	30	
		40	
		50	
		20	
	60	30	
		40	R (Red)
RDSH		50	Y (Yellow)
RDSR		30	N (None)
	65	40	
		50	
		20	
	70	30	
		40	
		50	
	90	30	
		50	

Catalog No.	D	T	Safety Color
		30	
	65	40	
		50	
RDTH		20	R (Red)
RDTR	80	30	Y (Yellow)
		40	N (None)
		50	
RDTH	90	30	
		50	



Order

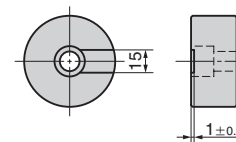
Catalog No.	D	T	Safety Color	Option
RDSH	60	30	N	
RDTR	65	50	Y	
RDTH	65	30	N	— DC20
RDSR	90	30	R	— TN



Option

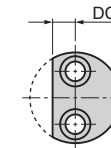
Option Code	Specification
TN	Grooves are machined. This applies to RDSH and RDSR. (See the drawing below)
TG	When the same height is required, simultaneous grinding is carried out. Variation of dimension T is within ± 0.01 .
DC	One side of dimension D is cut. $13 \leq DC < D/2$. Increment of 1 mm. It applies to RDTH and RDTR. (See the drawing below)

●TN Specification



It applies to RDSH and RDSR.

●DC Specification



It applies to RDTH and RDTR.