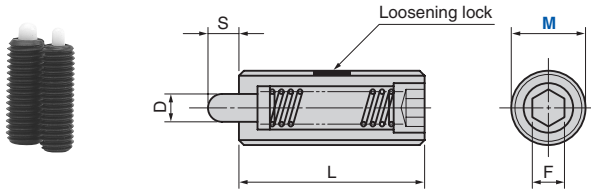


Spring Plunger

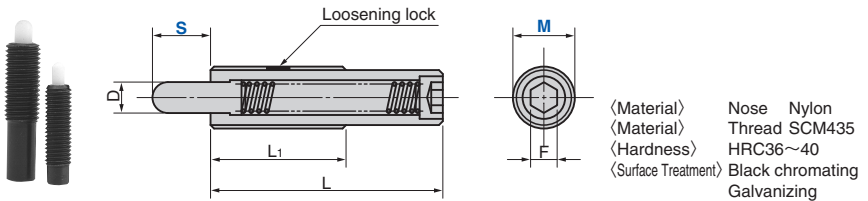
Nylon Nose Type

Die Setting Components

NSPS (Short Travel Type)



NSPL (Long Travel Type)



Catalog No.	M	Travel S	D	L	F	Applicable wrench	MxP	Load N (kgf)	
								Initial	Final
NSPS	5	3.0	2.0	20	1.5	PW5	M 5xP0.8	1.9 (0.2)	7.8 (0.8)
	6		2.5	25	2.0	PW6	M 6xP1.0	2.9 (0.3)	9.8 (1.0)
	8	4.0	3.1		2.5	PW8	M 8xP1.25		
	10	5.0	3.8	30	3.0	PW10	M10xP1.5	14.7 (1.5)	
	12		5.5		4.0	PW12	M12xP1.75	1.9 (0.2)	9.8 (1.0)

Catalog No.	M	Travel S	D	L	L1	F	Applicable wrench	MxP	Load N (kgf)	
									Initial	Final
NSPL	12	10	5.5	43		4.0	PW12	M12xP1.75	3.9 (0.4)	19.6 (2.0)
		10								
	16	15	8.0	60	35	5.0	PW16	M16xP2.0	9.8 (1.0)	39.2 (4.0)
		20								
		30		125					17.6 (1.8)	
24	15	10.0	60	45	8.0	PW24	M24xP3.0	19.6 (2.0)	98.0 (10.0)	



Order

Catalog No. M - S

NSPS 5
NSPL 16 - 15



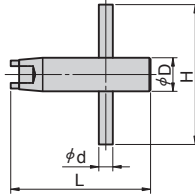
Refer to page 29 for plunger wrench.

Plunger Wrench

Die Setting Components

- SPLL/SPLH/SPXL/SPXH/NSPS/NSPL Plunger Wrench

PW



Catalog No.	Plunger M	H	d	D	L
	5	40	3	6	40
	6	40	3	6	40
	8	45	4	8	45
PW	10	45	4	10	45
	12	50	5	12	50
	16	70	8	16	52
	24	80	12	24	62
	30	100	15	30	73



Order

Catalog No.

PW

M

12

- PRJM/PRJL Plunger Wrench

PRJR16



Catalog No.

PRJR16



Order

Catalog No.

PRJR16