

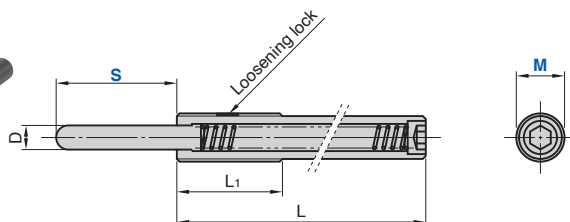
# Spring Plunger

## Super Long Type

### Die Setting Components

SPXL (Light Load Type)

SPXH (Heavy Load Type)



(Material) Nose SK95  
 (Material) Thread SCM435  
 (Hardness) HRC36~40  
 (Surface Treatment) Black chromating Galvanizing

Die Setting Components

Catalog No.	M	Travel S	D	L	L <sub>1</sub>	MxP	SPXL Load [N (kgf)]		SPXH Load [N (kgf)]	
							Initial	Final	Initial	Final
SPXL SPXH	16	40	8.0	125	35	M16xP2.0	17.6 (1.8)	39.2 (4.0)	19.6 (2.0)	78.4 ( 8.0)
		50		19.6 (2.0)			49.0 (5.0)	29.4 (3.0)	98.0 (10.0)	
		60		17.6 (1.8)			39.2 (4.0)	19.6 (2.0)	78.4 ( 8.0)	
		70		19.6 (2.0)			49.0 (5.0)	29.4 (3.0)	147.0 (15.0)	
		80		200						



Catalog No.    M    -    S  
 SPXL            16    -    50

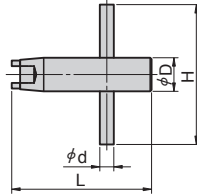
▶ Refer to page 29 for plunger wrench.

# Plunger Wrench

## Die Setting Components

- SPLL/SPLH/SPXL/SPXH/NSPS/NSPL Plunger Wrench

PW



Catalog No.	Plunger M	H	d	D	L
	5	40	3	6	40
	6	40	3	6	40
	8	45	4	8	45
PW	10	45	4	10	45
	12	50	5	12	50
	16	70	8	16	52
	24	80	12	24	62
	30	100	15	30	73



Order

Catalog No.

PW

M

12

- PRJM/PRJL Plunger Wrench

PRJR16



Catalog No.

PRJR16



Order

Catalog No.

PRJR16