

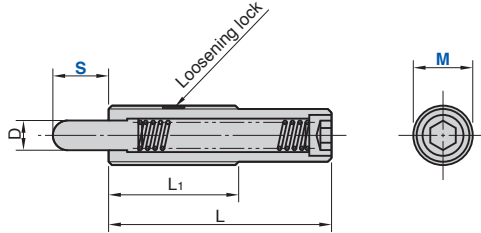
# Spring Plunger

## Long Type

### Die Setting Components

SPLL (Light Load Type)

SPLH (Heavy Load Type)



<Material> Nose SK95  
 <Material> Thread SCM435  
 <Hardness> HRC36~40  
 <Surface Treatment> Black chromating Galvanizing

Catalog No.	M	Travel S	D	L	L <sub>1</sub>	MxP	Load N (kgf)	
							Initial	Final
SPLL	12	10	5.5	43		M12xP1.75	3.9 (0.4)	19.6 ( 2.0)
		10					12.7 (1.3)	
	16	15	8.0	60	35	M16xP2.0	9.8 (1.0)	39.2 ( 4.0)
		20					12.7 (1.3)	
		30					17.6 (1.8)	
24	15	10.0	60	45	M24xP3.0	19.6 (2.0)	98.0 (10.0)	

Catalog No.	M	Travel S	D	L	L <sub>1</sub>	MxP	Load N (kgf)	
							Initial	Final
SPLH	12	10	5.5	43		M12xP1.75	6.8 (0.7)	39.2 ( 4.0)
		10					26.4 (2.7)	
	16	15	8.0	60	35	M16xP2.0	14.7 (1.5)	78.4 ( 8.0)
		20					16.6 (1.7)	
		30					19.6 (2.0)	
24	15	10.0	60	45	M24xP3.0	39.2 (4.0)	196.1 (20.0)	



Order

Catalog No.    M    -    S  
 SPLH            16    -    20

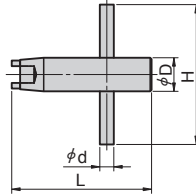
Refer to page 29 for plunger wrench.

# Plunger Wrench

## Die Setting Components

- SPLL/SPLH/SPXL/SPXH/NSPS/NSPL Plunger Wrench

PW



Catalog No.	Plunger M	H	d	D	L
	5	40	3	6	40
	6	40	3	6	40
	8	45	4	8	45
PW	10	45	4	10	45
	12	50	5	12	50
	16	70	8	16	52
	24	80	12	24	62
	30	100	15	30	73



Order

Catalog No.

PW

M

12

- PRJM/PRJL Plunger Wrench

PRJR16



Catalog No.

PRJR16



Order

Catalog No.

PRJR16