

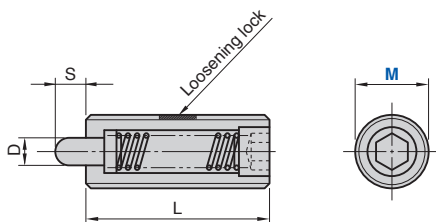
# Spring Plunger

## Short Type

### Die Setting Components

SPL (Light Load Type)

SPH (Heavy Load Type)



〈Material〉 Nose SK95  
 〈Material〉 Thread SCM435  
 〈Hardness〉 HRC36~40  
 〈Surface Treatment〉 Black chromating Galvanizing

Catalog No.	M	Travel S	D	L	MxP	SPL Load [N (kgf)]		SPH Load [N (kgf)]	
						Initial	Final	Initial	Final
SPH	4	2.0	1.6	12	M 4xP0.7	—	—	1.9 (0.2)	9.8 (1.0)
	5							2.0	20
SPL SPH	6	3.0	2.5	25	M 6xP1.0	2.9 (0.3)	9.8 (1.0)	7.8 (0.8)	29.4 (3.0)
	8							3.1	M 8xP1.25
	10	4.0	3.8					M10xP1.5	1.9 (0.2)
	12	5.0	5.5	30	M12xP1.75	1.9 (0.2)	9.8 (1.0)	9.8 (1.0)	49.0 (5.0)



Order

Catalog No.

M

SPH

12



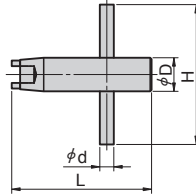
Refer to page 29 for plunger wrench.

# Plunger Wrench

## Die Setting Components

- SPLL/SPLH/SPXL/SPXH/NSPS/NSPL Plunger Wrench

PW



Catalog No.	Plunger M	H	d	D	L
	5	40	3	6	40
	6	40	3	6	40
	8	45	4	8	45
PW	10	45	4	10	45
	12	50	5	12	50
	16	70	8	16	52
	24	80	12	24	62
	30	100	15	30	73



Order

Catalog No.

PW

M

12

- PRJM/PRJL Plunger Wrench

PRJR16



Catalog No.

PRJR16



Order

Catalog No.

PRJR16