

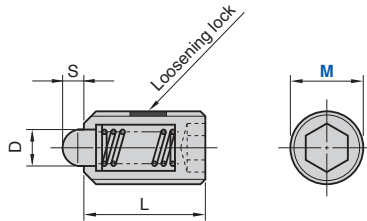
Spring Plunger

Small Type

Die Setting Components

SPSL (Light Load Type)

SPSH (Heavy Load Type)



(Material) Nose SK95
 (Material) Thread SCM435
 (Hardness) HRC36~40
 (Surface Treatment) Black chromating Galvanizing

| Catalog No. | M | Travel S | D | L | MxP | SPSL Load [N (kgf)] | | SPSH Load [N (kgf)] | |
|-------------|----|-------------|-----|----|-----------|------------------------|------------|------------------------|------------|
| | | | | | | Initial | Final | Initial | Final |
| SPSL | 5 | 1.5 | 2.5 | 12 | M 5xP0.8 | 1.9 (0.2) | 7.8 (0.8) | 4.9 (0.5) | 14.7 (1.5) |
| | 6 | | 3.0 | 13 | M 6xP1.0 | 2.9 (0.3) | 9.8 (1.0) | 5.8 (0.6) | 19.6 (2.0) |
| SPSH | 8 | 2.0 | 4.0 | 15 | M 8xP1.25 | | | | |
| SPSH | 10 | 2.5 | 5.0 | 16 | M10xP1.5 | 4.9 (0.5) | 14.7 (1.5) | 9.8 (1.0) | 29.4 (3.0) |
| | 12 | 3.5 | 6.0 | 20 | M12xP1.75 | | | | |
| | 16 | 4.5 | 8.0 | 22 | M16xP2.0 | 9.8 (1.0) | 29.4 (3.0) | 19.6 (2.0) | 58.8 (6.0) |



Order

Catalog No.

M

SPSH

12



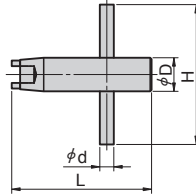
Refer to page 29 for plunger wrench.

Plunger Wrench

Die Setting Components

- SPLL/SPLH/SPXL/SPXH/NSPS/NSPL Plunger Wrench

PW



| Catalog No. | Plunger M | H | d | D | L |
|-------------|-----------|-----|----|----|----|
| | 5 | 40 | 3 | 6 | 40 |
| | 6 | 40 | 3 | 6 | 40 |
| | 8 | 45 | 4 | 8 | 45 |
| PW | 10 | 45 | 4 | 10 | 45 |
| | 12 | 50 | 5 | 12 | 50 |
| | 16 | 70 | 8 | 16 | 52 |
| | 24 | 80 | 12 | 24 | 62 |
| | 30 | 100 | 15 | 30 | 73 |



Order

Catalog No.

PW

M

12

- PRJM/PRJL Plunger Wrench

PRJR16



Catalog No.

PRJR16



Order

Catalog No.

PRJR16