

Oilless Slide Plate

Copper Powder Sintered Type
Thickness 10 mm

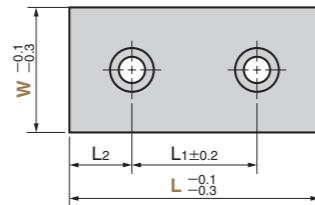
SO#220



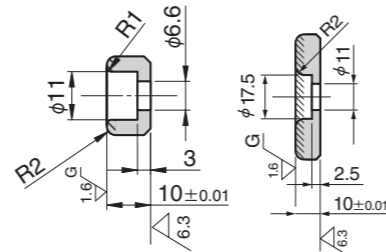
TWX (Sintered and Standard Type)



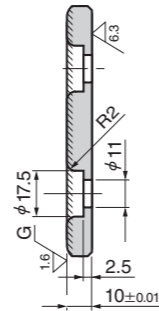
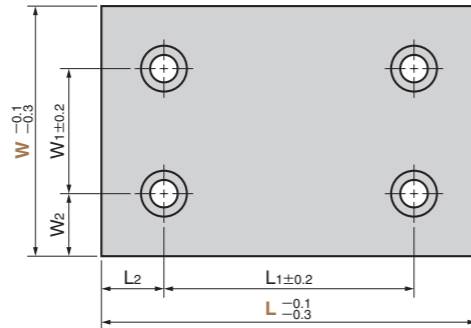
● W = 18 ~ 75



● W = 18 ● W = 28 ~ 75



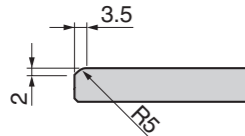
● W = 100 or more



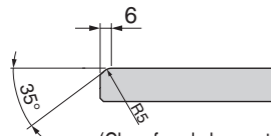
● W = 18 · 28



● W = 38 · 48 · 58

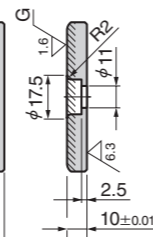
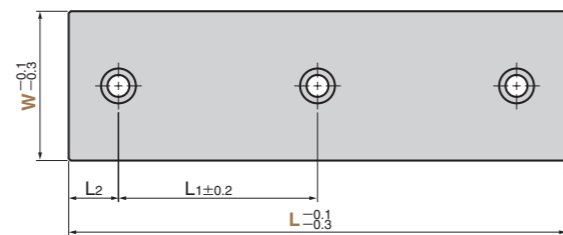


● W = 75 or more

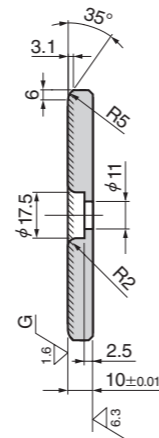
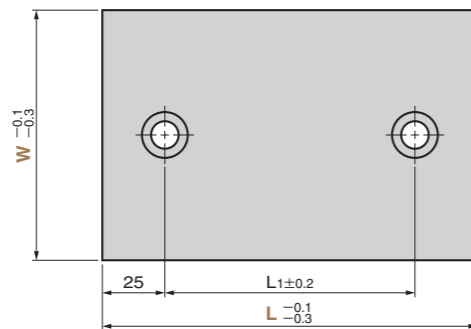
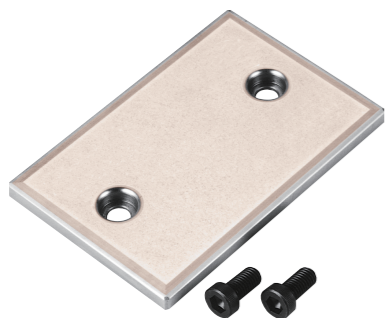


(Chamfered shape at both ends)

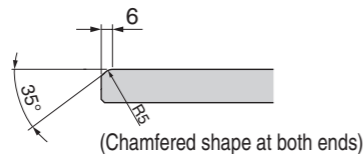
● W = 48 L = 250
W = 75 L = 250



TWXT (2-Hole Type)



● Sliding Direction



(Chamfered shape at both ends)

Material Copper powder sintered(SO#220)
Hatched area sintered
Thickness 1.2mm or more
S45C (Base Plate)
Accessory Special brazier head bolt

Operation Range

Lubricating Condition	Environment Condition	Max. Allowable Load P N/mm ²	Max. Allowable Sliding Speed V m/min	Max. Allowable PV value N/mm ² · m/min	Operation Range Temperature °C
No lubrication	Atmosphere	50	30	100	-40 ~ +120
Regular lubrication (Grease)		75	60	150	

Physical Properties

Specific Gravity	Hardness HRM	Compression strength N/mm ² (0.2% proof stress)	Impregnation ratio %
6.2±0.3	70 ~ 90	200 ~ 250	18 or more

W ₁	W ₂	L ₁	L ₂	Catalog No.	W	L	
						TWX	TWXT
		45	15			75	
		50			18*	100	
		75	25			125	
		100				150	
		45	15			75	
		50			28	100	
		75	25			125	
		100				150	
		45	15			75	
		50			38	100	
		75	25			125	
		100				150	
		45	15			75	
		50		TWX		100	
		75	25		48	125	
						150	
		100	50			200	
			25			250	
		45	15			75	
		50			58	100	
		100				150	
		25				75	
		50	25			100	
		75			75	125	
		100				150	
		150				200	
		100				250	
		50				100	100
		75				125	125
50		100	25		100	150	150
	25	150				200	200
		200				250	250
			50			300	
75		75		TWX		125	125
		100		TWXT		150	150
		150	25		125	200	200
50	37.5	200				250	250
			50			300	
		100				150	150
100	25	150	25		150	200	200
		200				250	250

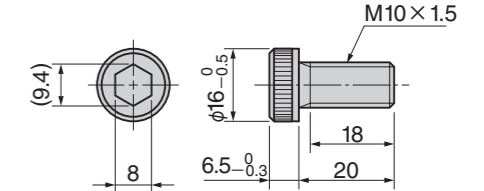
* Bolts do not accompany with TWX18.



Order

Catalog No. TWX
W 48 - L 150

● Special brazier head bolt LCS10-20
M10×1.5



■ We are ready to accept requests or orders for special parts.