

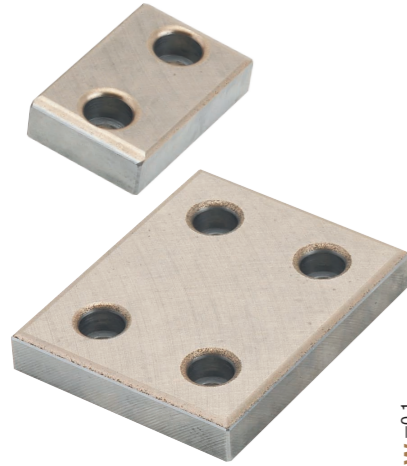
Oilless Slide Plate

Copper Powder Sintered Type
Thickness 20 mm

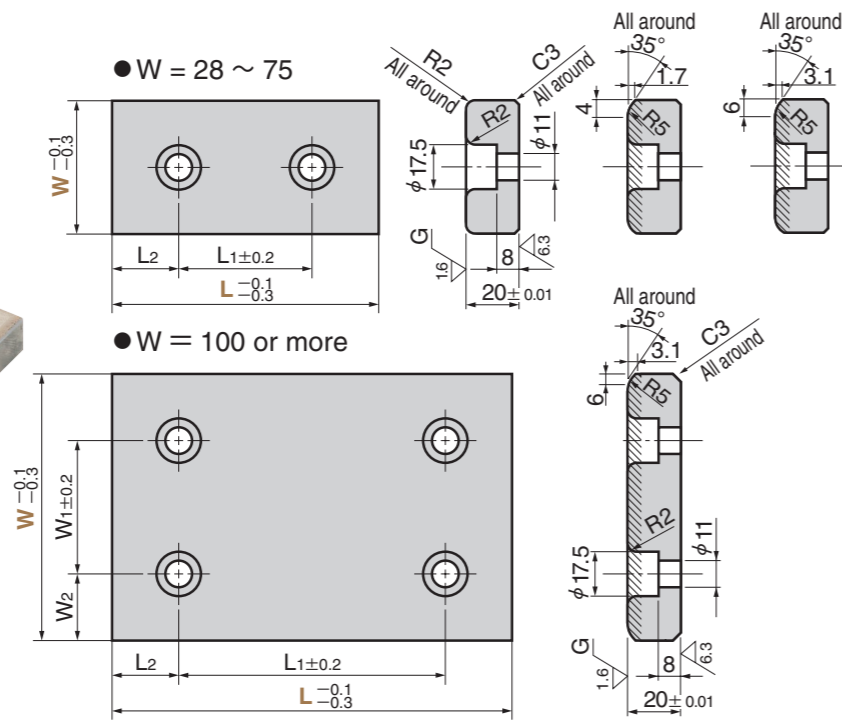
SO#220



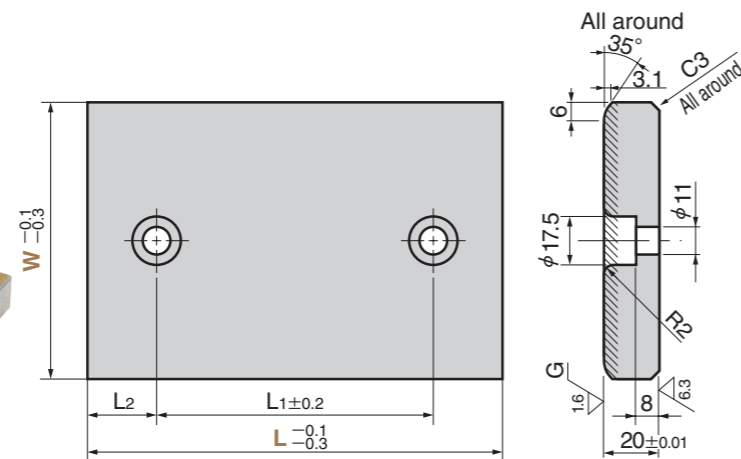
SOX (Sintered and Standard Type)



● W = 28 ● W = 38, 48, 58 ● W = 75



SOXT (Sintered 2-Hole Type)



● Sliding Direction



Material Copper powder sintered (SO#220)
Hatched area sintered
Thickness 1.2mm or more
SS400 (Base Plate)

Operation Range

Lubricating Condition	Environment Condition	Max. Allowable Load P N/mm ²	Max. Allowable Sliding Speed V m/min	Max. Allowable PV value N/mm ² · m/min	Operation Range Temperature °C
No lubrication	Atmosphere	50	30	100	-40 ~ +120
Regular lubrication (Grease)		75	60	150	

Physical Properties

Specific Gravity	Hardness HRM	Compression strength N/mm ² (0.2% proof stress)	Impregnation ratio %
6.2±0.3	70 ~ 90	200 ~ 250	18 or more

W1	W2	L1	L2	Catalog No.	W	L	
						SOX	SOXT
		45	15			75	
		50	25		28	100	
		100				150	
		45	15			75	
		50			38	100	
		75	25			125	
		100				150	
		45	15			75	
		50			48	100	
		75	25			125	
		100		SOX		150	
		45	15			200	
		50			58	75	
		100				100	
		25				150	
		50			75	100	
		75	25			125	
		100				150	
		150				200	
		100				250	
		50				100	100
		75				125	125
50	25	100	25		100	150	150
		150				200	200
		200				250	250
		75	50			300	300
		100		SOX		125	125
		150	25	SOXT		150	150
50	37.5	150			125	200	200
		200				250	250
		100	50			300	
100	25	100				150	150
		150	25		150	200	200
		200				250	250



Order

Catalog No. W - L

SOX 48 - 75

SOXT 125 - 150

■ We are ready to accept requests or orders for special parts.