

# Oilless Slide Plate

Copper Alloy Type  
Thickness 5 mm

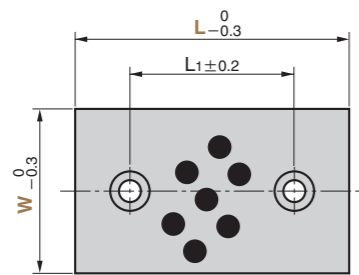
SO#50SP2



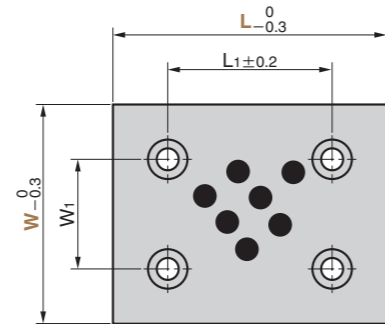
## UWP



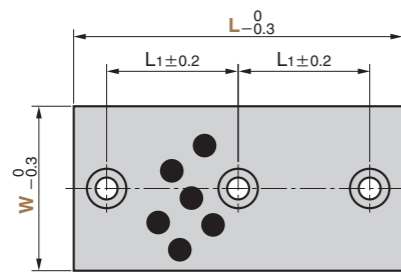
● W = 18 ~ 38 L = 50 ~ 100  
W = 48 L = 75 ~ 125



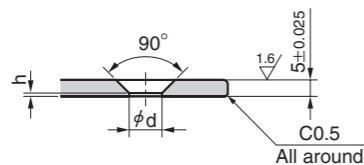
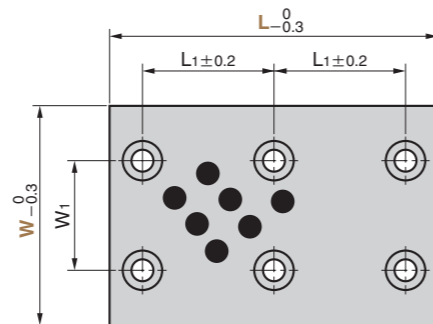
● W = 75 L = 75 ~ 125  
W = 100 L = 100, 125



● W = 18 ~ 48 L = 150



● W = 75, 100 L = 150



Surface and all around R1.5

### ● Sliding Direction

W = 18, W = 28 L = 50



W = 28 L = 75 or more



Material Base Copper alloy (SO-2)  
Solid lubricant (GR-1)  
Accessory Flat Head Bolt

## ■ Operation Range

Lubricant Type	Lubricating Condition	Environment Condition	Max. Allowable Load P N/mm <sup>2</sup>	Max. Allowable Sliding Speed V m/min	Max. Allowable PV value N/mm <sup>2</sup> · m/min	Operation Range Temperature °C
GR-1	No lubrication	Atmosphere	100	15	150	-50 ~ +300
	Regular lubrication (Grease)			30	200	-50 ~ +150

⚠ When the product is used at high temperature (150°C or more), the embedding specification of solid lubricant is different. Please contact us for details.

## ■ Physical Properties

Specific Gravity	Hardness HB	Elongation %	Tensile Strength N/mm <sup>2</sup>	Linear Expansion Coefficient × 10 <sup>-5</sup> /°C
7.9	210 or more	12 or more	755 or more	1.9

W <sub>1</sub>	L <sub>1</sub>	d	h	Catalog No.	W	L
	20					50
	45	6.5	1.5		18	75
	70			100		
	60			150		
	20					50
	45				28	75
	70			100		
	60			150		
	20					50
	45				38	75
	70			100		
	60			150		
	20	10	0.8		48	50
	45			75		
	70			100		
	95					125
	60					150
	45					75
45	70				75	100
	95			125		
	60			150		
	70					100
70	95				100	125
	60			150		
	60					150



Order

Catalog No.

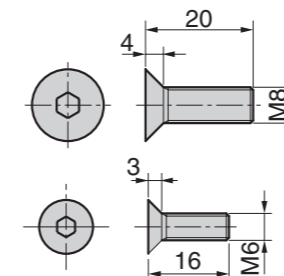
W - L

UWP

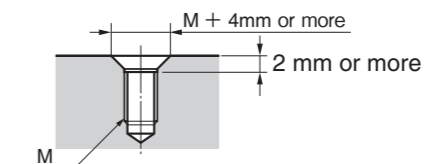
75

- 150

### ● Flat Head Bolt



⚠ When tapped holes for mounting are drilled on the mating part, chamfer corners as shown below.



■ We are ready to accept requests or orders for special parts.