

AERIAL CAM UNIT

グレード	加工力 kN (tonf)			ストローク	Catalog No.	W	θ	圧力源 PS
	100万回標準	100万回条件付	30万回条件付					
White	14.7(1.5)	22.1(2.2)	29.4(3.0)	Short	VACWS	46	00~80 (5°ピッチ)	ISO ISOL

ISO, ISOL: Coil Spring

・オーダー方法が変わり圧力源について、ISOまたは、ISOL: Longlifeタイプをご指定ください。



Catalog No.	W	θ	PS	Option
VACWS	46	10	ISO	
VACWS	46	10	ISOL	SC60



オプションコード	仕様
SC	マウント面長を1~60mmの範囲(指定1mm単位)で前方に伸ばします。

■スプリング力

●ISO仕様

θ	初圧		終圧		使用 スプリング
	N	kgf	N	kgf	
00	125	12.8	1129	115	TJM25-102
05	220	22.4	1129	115	TJM25-102
10	282	28.8	1129	115	TJM25-102
15	108	11.0	1007	103	TJM25-89
20	144	14.7	1007	103	TJM25-89
25	180	18.4	1007	103	TJM25-89
30	180	18.4	1007	103	TJM25-89
35	180	18.4	1007	103	TJM25-89
40	180	18.4	1007	103	TJM25-89
45	180	18.4	1007	103	TJM25-89
50	180	18.4	1007	103	TJM25-89
55	220	22.4	1035	106	TJM25-102
60	180	18.4	1007	103	TJM25-89
65	169	17.2	1011	103	TJM25-76
70	150	15.3	1000	102	TJM25-64
75	188	19.2	1002	102	TJM25-51
80	254	25.9	980	100	TJM25-44

●ISOL仕様

θ	初圧		終圧		使用 スプリング
	N	kgf	N	kgf	
00	88	9.0	796	81.2	TJL25-102
05	155	15.8	796	81.2	TJL25-102
10	199	20.3	796	81.2	TJL25-102
15	76	7.7	708	72.3	TJL25-89
20	101	10.3	708	72.3	TJL25-89
25	127	12.9	708	72.3	TJL25-89
30	127	12.9	708	72.3	TJL25-89
35	127	12.9	708	72.3	TJL25-89
40	127	12.9	708	72.3	TJL25-89
45	127	12.9	708	72.3	TJL25-89
50	127	12.9	708	72.3	TJL25-89
55	155	15.8	729	74.4	TJL25-102
60	127	12.9	708	72.3	TJL25-89
65	118	12.1	710	72.5	TJL25-76
70	106	10.8	704	71.8	TJL25-64
75	132	13.5	706	72.0	TJL25-51
80	179	18.3	690	70.4	TJL25-44

■カムストローク

θ	ストローク mm
00	20.6
05	20.6
10	21.0
15	21.2
20	22.1
25	23.0
30	25.0
35	27.1
40	29.6
45	32.4
50	35.8
55	45.3
60	46.0
65	47.3
70	49.7
75	50.2
80	57.6

■重量*1

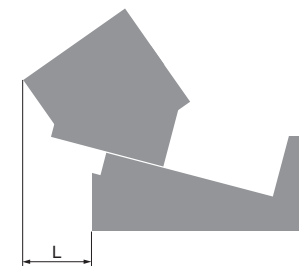
θ	全重量 kg	カムスライダ重量 kg	取付工具重量*2 kg
00	5.5	2.0	2.0
05	5.5	2.0	2.0
10	5.5	2.0	2.0
15	5.4	2.0	2.1
20	5.3	2.0	2.1
25	5.3	2.0	2.2
30	5.3	2.0	2.3
35	5.2	2.0	2.4
40	5.2	2.0	2.6
45	5.2	2.0	2.8
50	5.4	2.0	3.3
55	6.8	2.5	3.5
60	7.0	2.7	3.3
65	7.4	3.0	3.0
70	7.5	3.1	2.9
75	7.8	3.3	2.7
80	8.1	3.5	2.5

*1 上記数値は、SCオプション無しの場合です。SCオプション有りの場合はスライダ重量が増えます。取付工具重量を軽減してください。

*2 取付工具重量は目安値です。厳密にはプレス速度により変わります。

■後方抜きスペース

θ	L mm
00	23.4
05	29.7
10	35.9
15	44.9
20	53.5
25	61.6
30	69.1
35	77.2
40	81.7
45	90.6
50	93.9
55	90.0
60	88.9
65	95.0
70	99.7
75	105.1
80	112.1

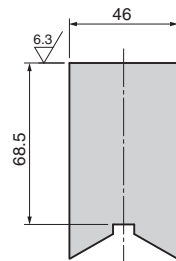
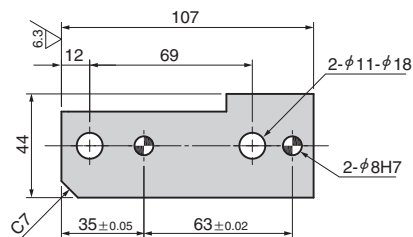
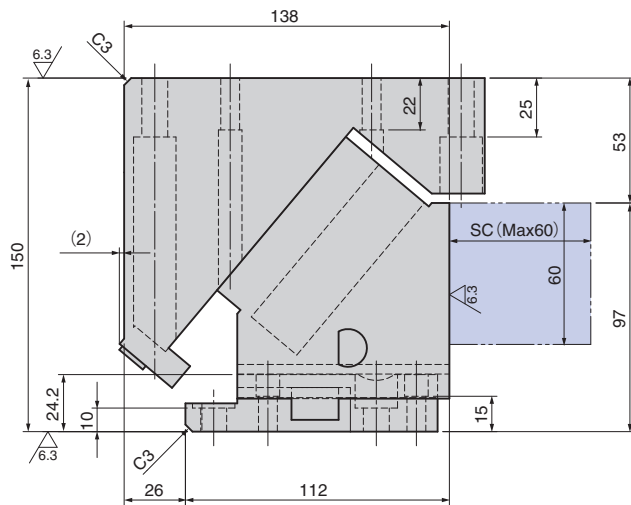
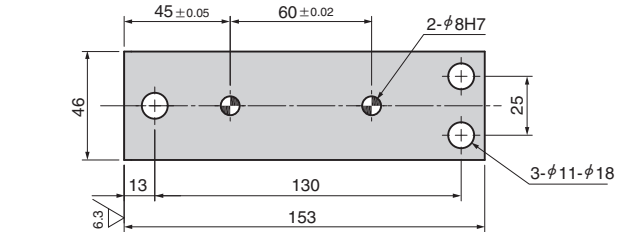
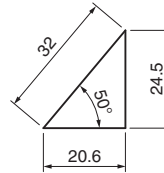


AERIAL CAM UNIT

VACWS46-00

CAD FILE

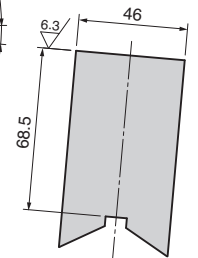
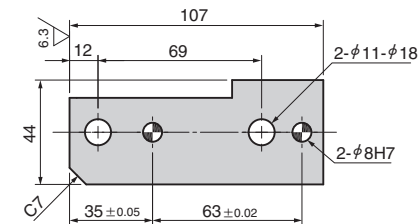
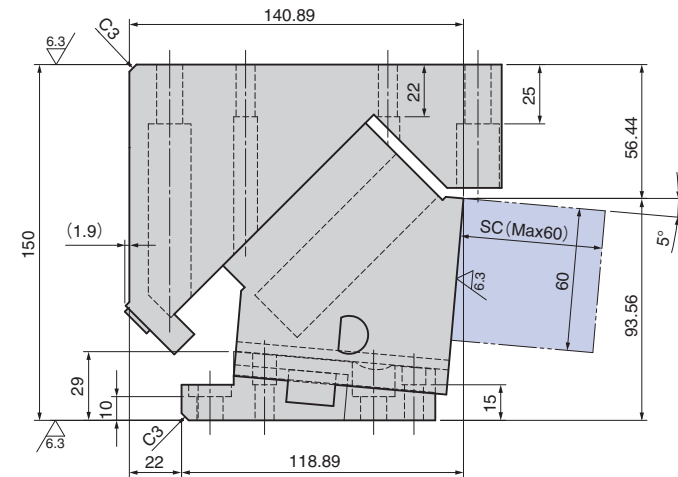
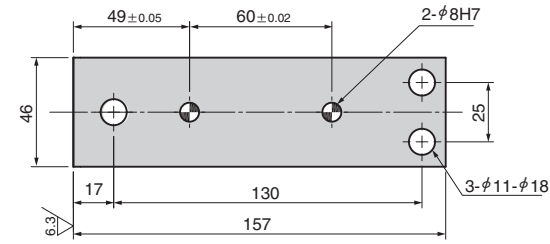
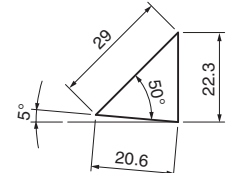
● Cam Diagram



VACWS46-05

CAD FILE

● Cam Diagram



部品表P.391参照。

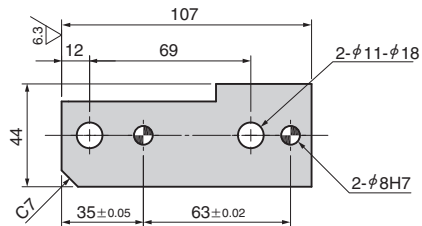
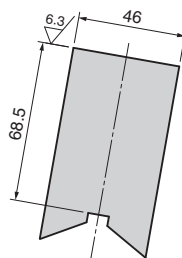
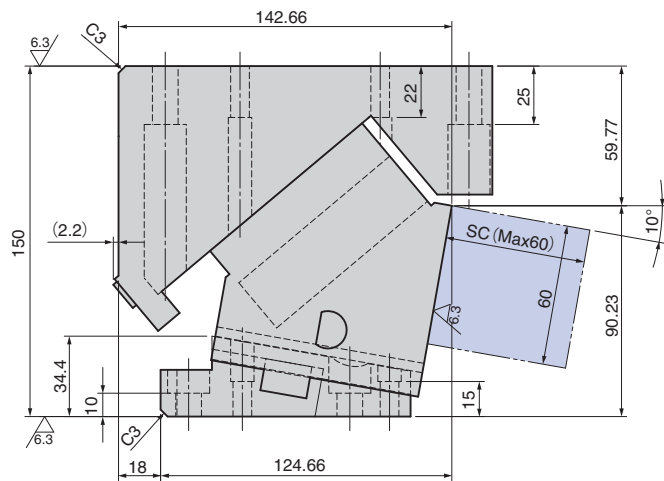
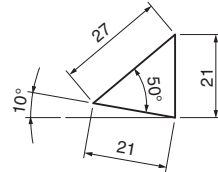
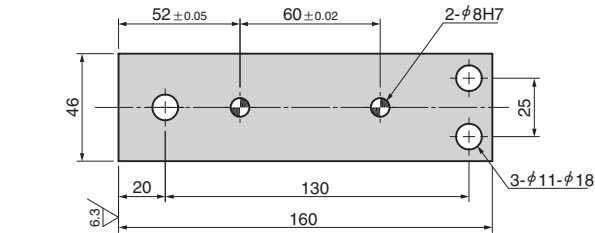
部品表P.391参照。

AERIAL CAM UNIT

VACWS46-10



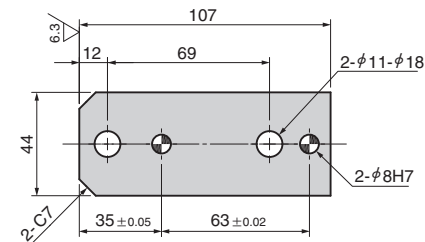
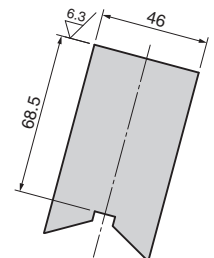
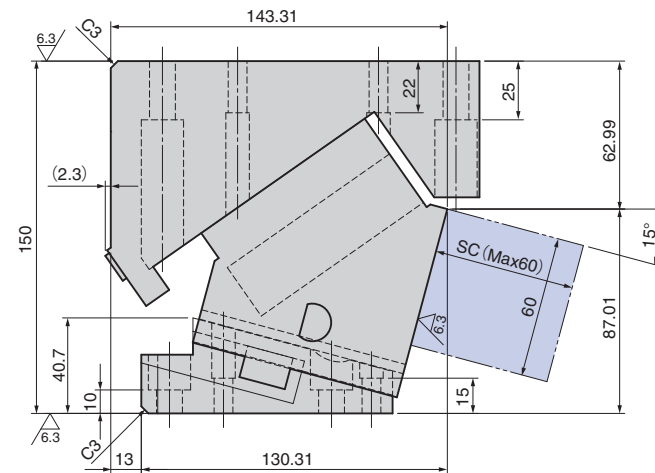
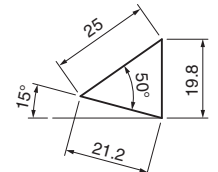
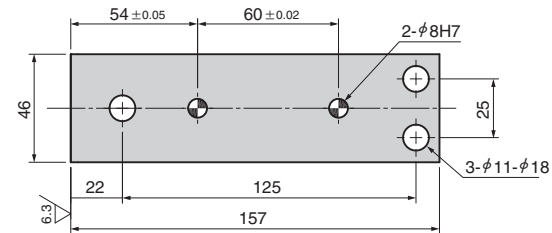
● Cam Diagram



VACWS46-15



● Cam Diagram

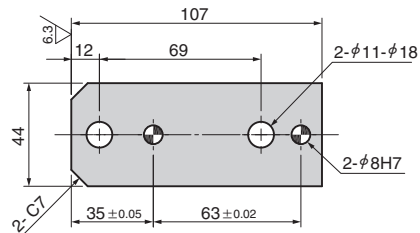
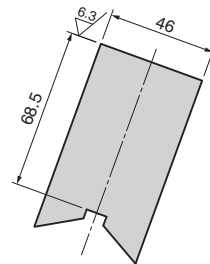
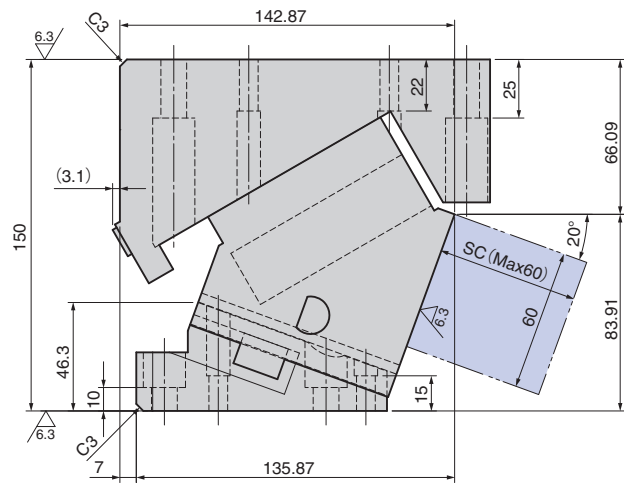
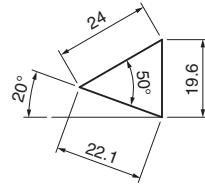
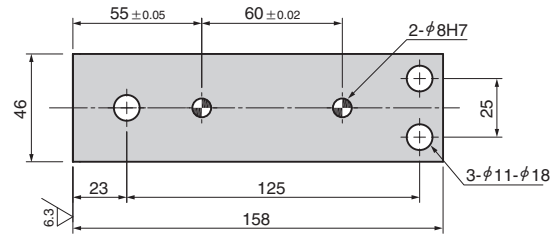


AERIAL CAM UNIT

VACWS46-20



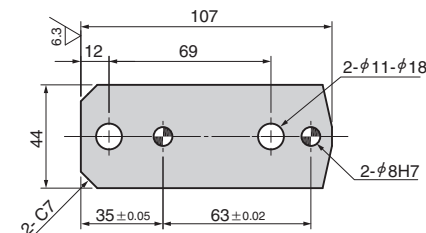
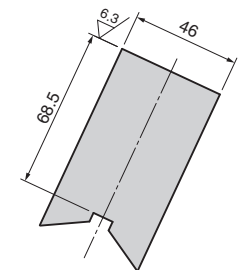
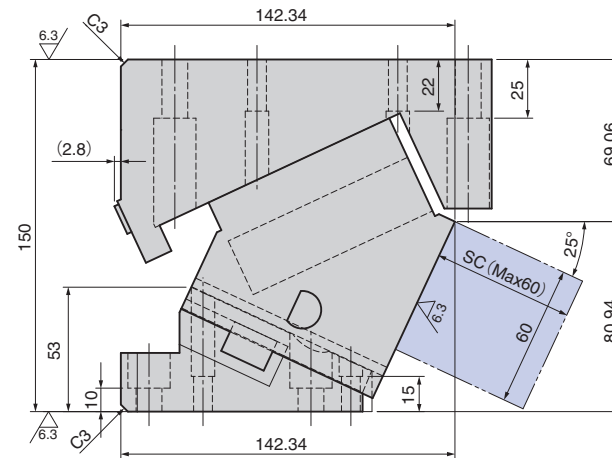
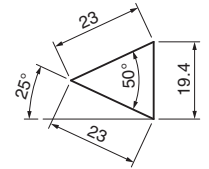
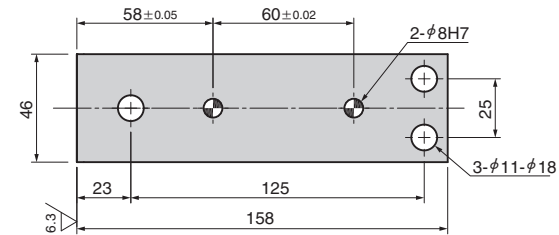
● Cam Diagram



VACWS46-25



● Cam Diagram

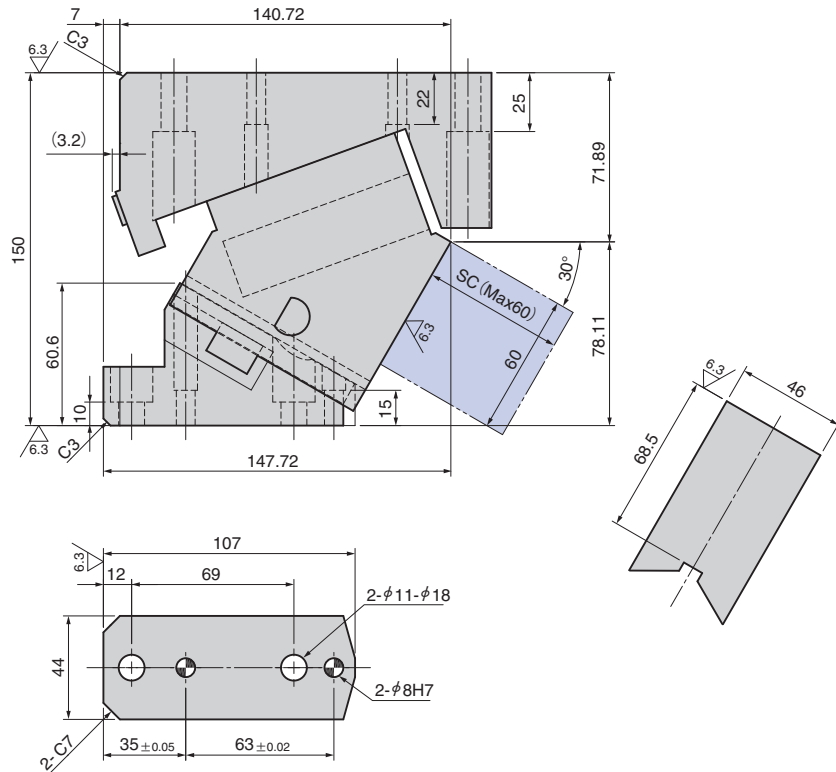
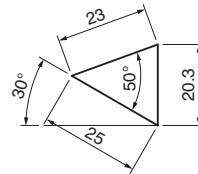
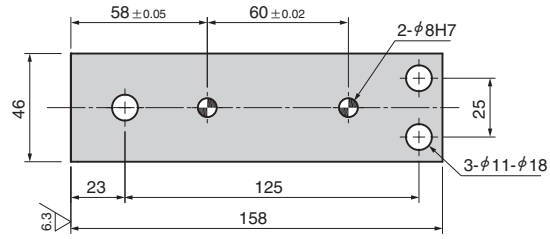


AERIAL CAM UNIT

VACWS46-30



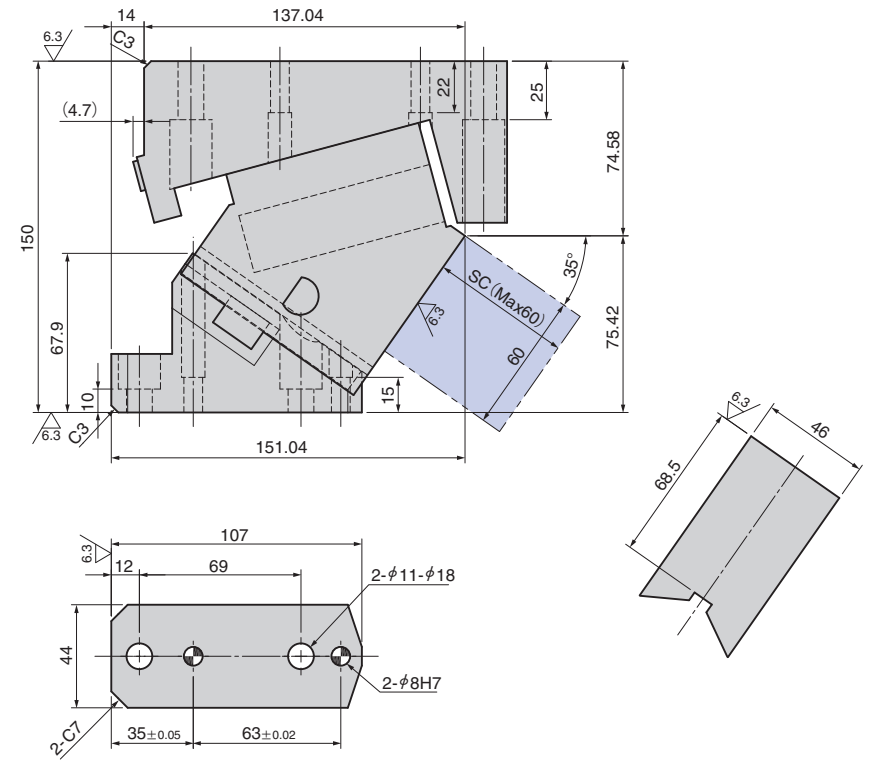
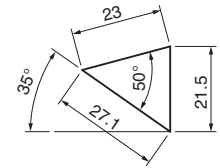
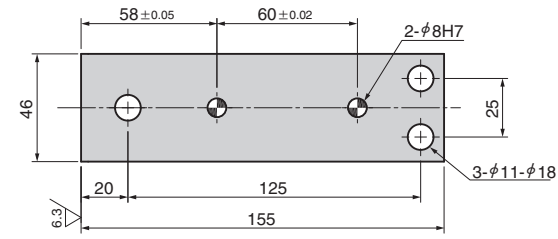
● Cam Diagram



VACWS46-35



● Cam Diagram

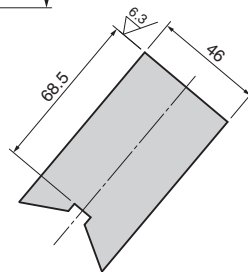
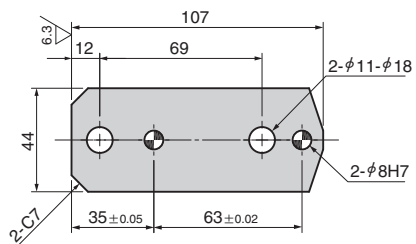
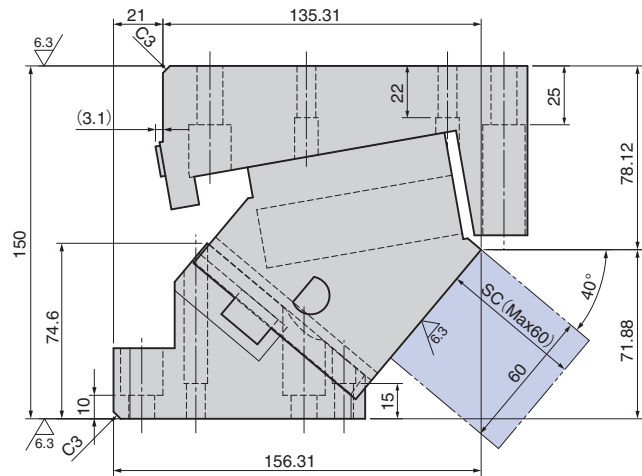
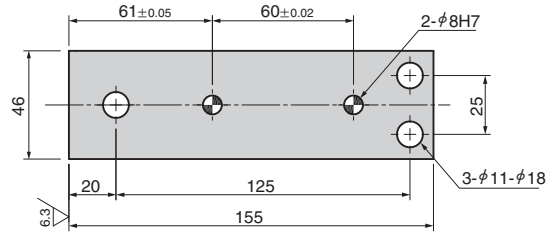
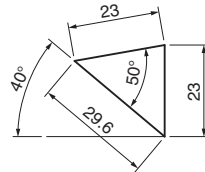


AERIAL CAM UNIT

VACWS46-40

CAD FILE

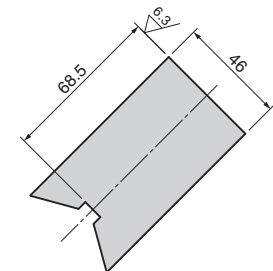
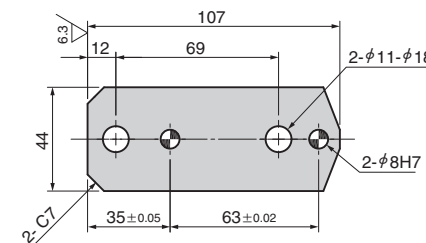
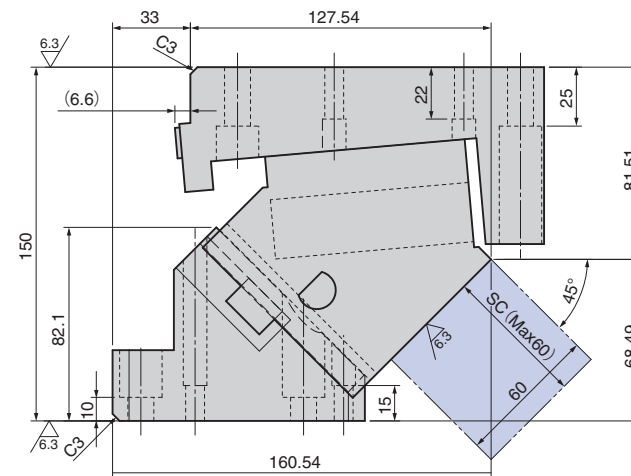
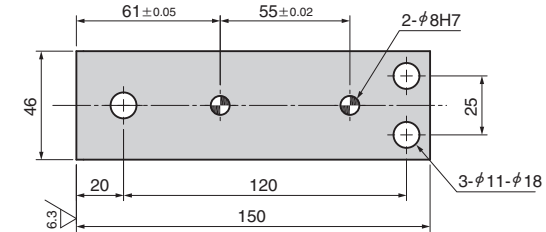
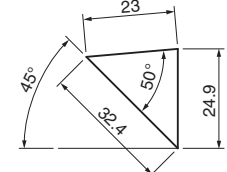
● Cam Diagram



VACWS46-45

CAD FILE

● Cam Diagram

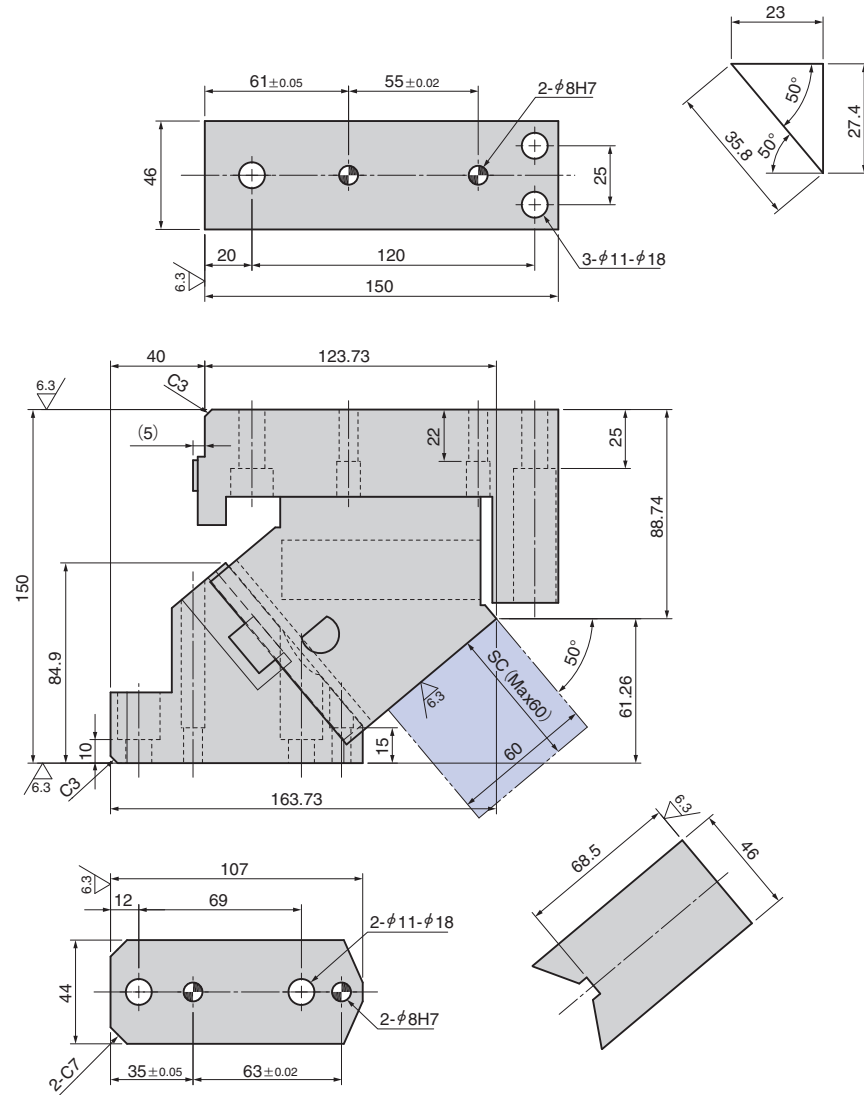


AERIAL CAM UNIT

VACWS46-50

CAD FILE

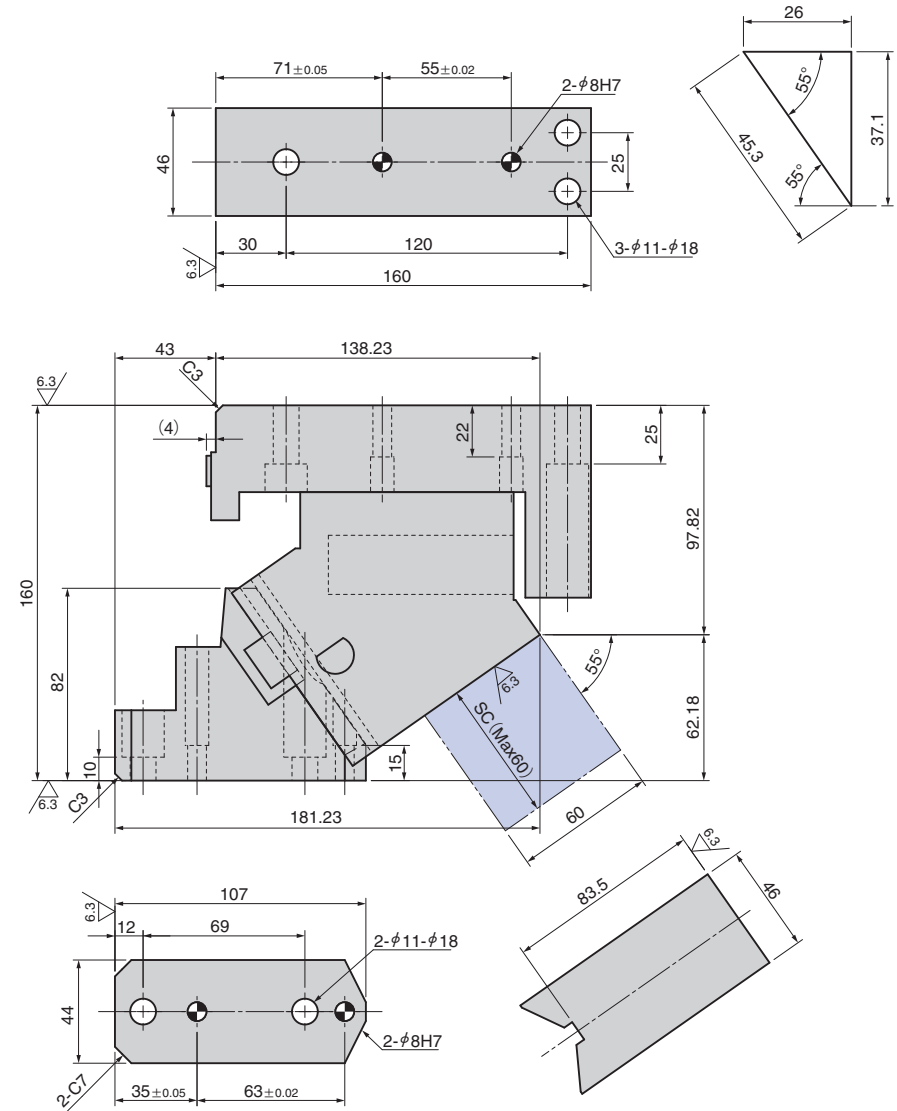
● Cam Diagram



VACWS46-55

CAD FILE

● Cam Diagram

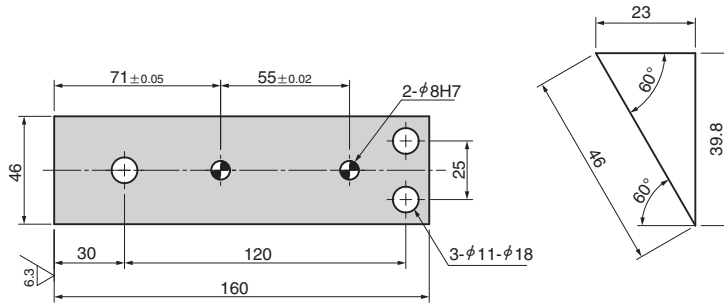


AERIAL CAM UNIT

VACWS46-60

CAD FILE

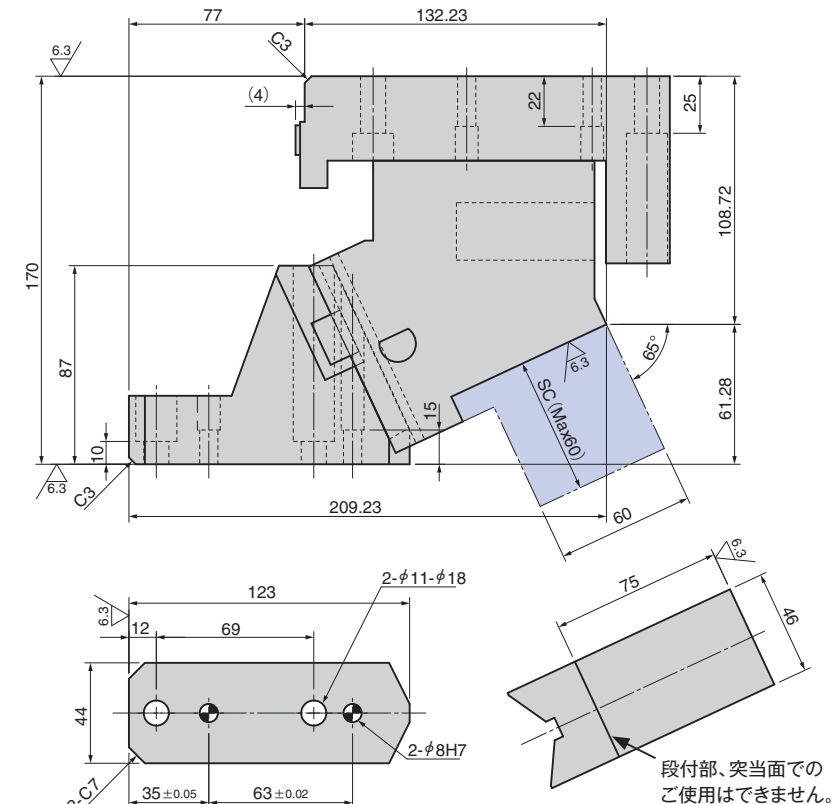
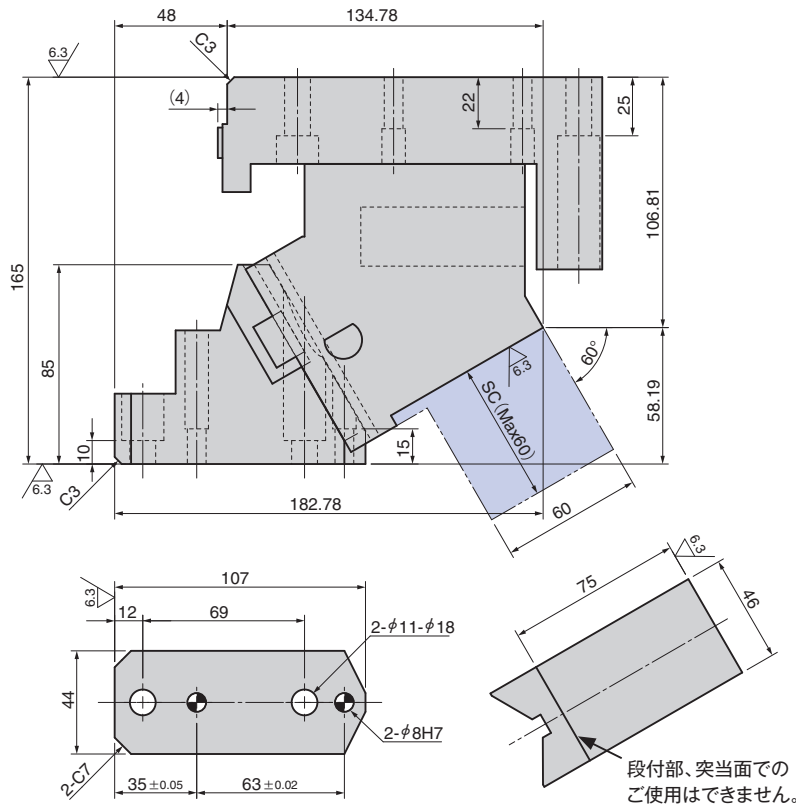
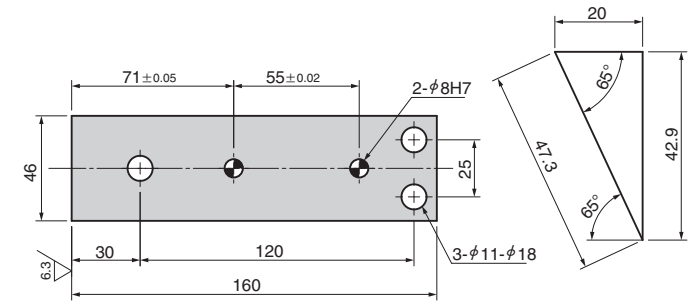
● Cam Diagram



VACWS46-65

CAD FILE

● Cam Diagram



▶ 部品表P.391参照。

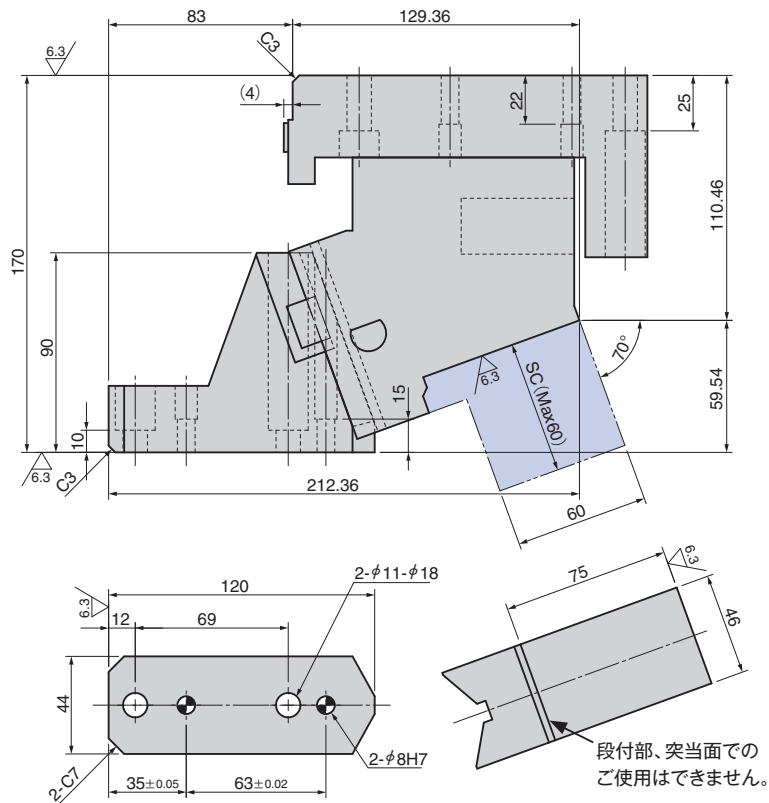
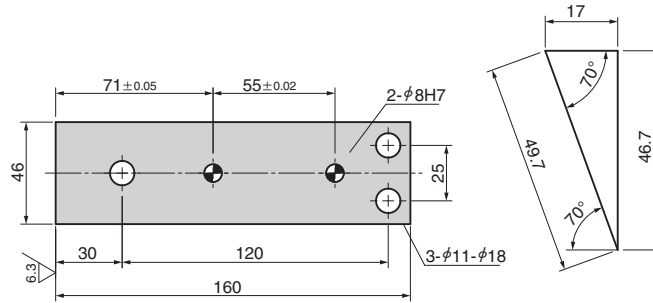
▶ 部品表P.391参照。

AERIAL CAM UNIT

VACWS46-70

CAD FILE

● Cam Diagram

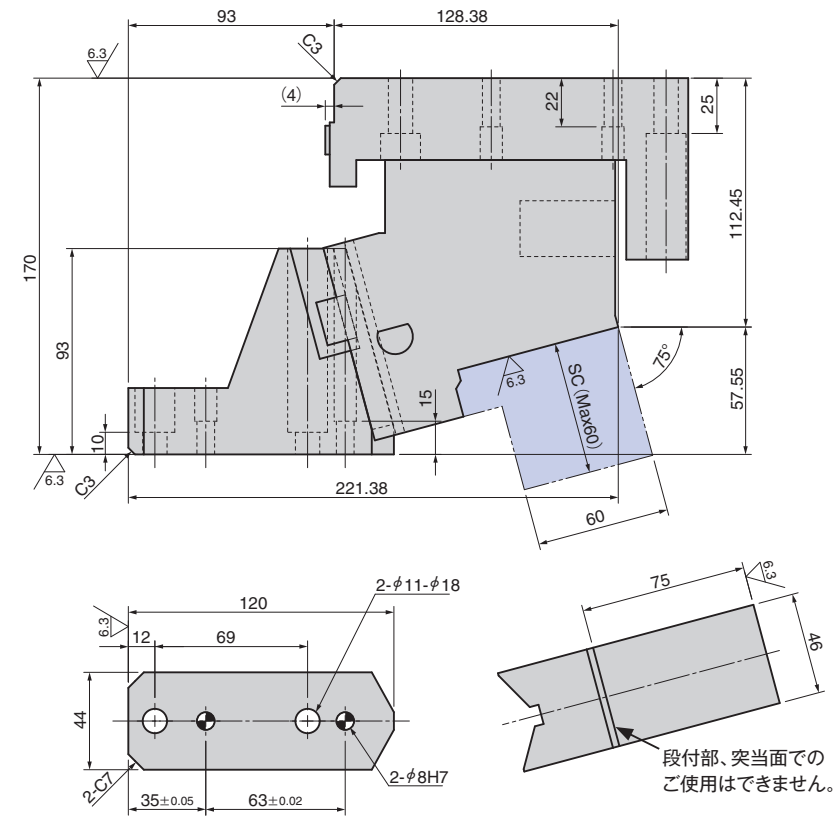
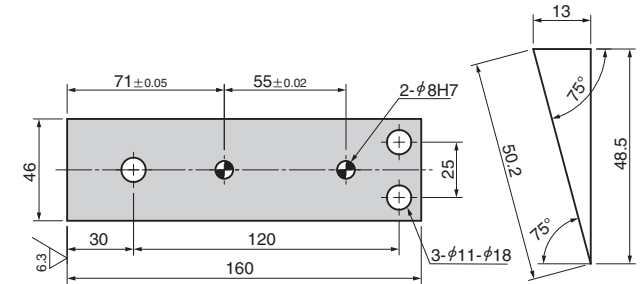


▶ 部品表P.391参照。

VACWS46-75

CAD FILE

● Cam Diagram



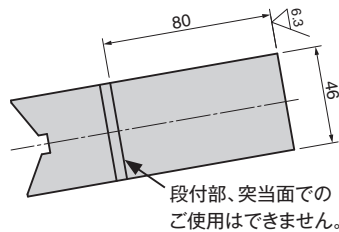
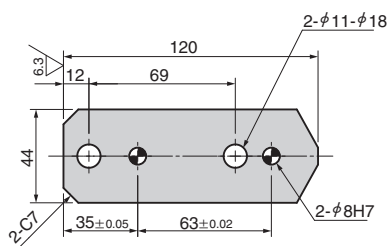
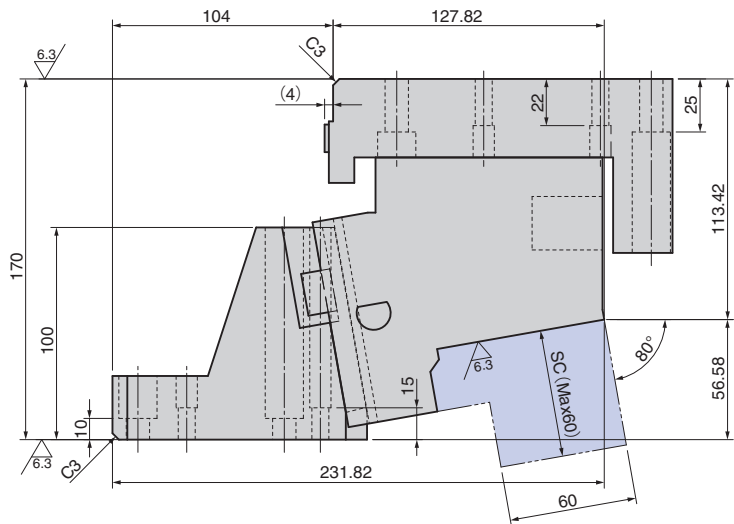
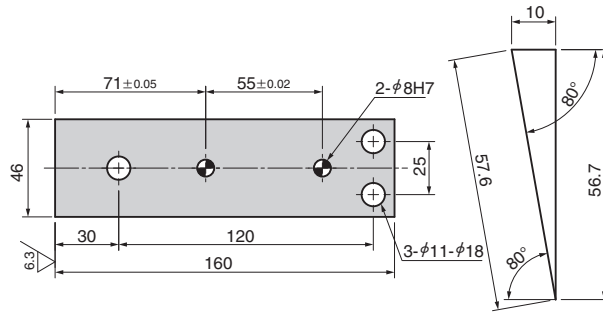
▶ 部品表P.391参照。

AERIAL CAM UNIT

VACWS46-80



● Cam Diagram



▶ 部品表P.391参照。