

スライドプレート 板厚 20mm スチールタイプ

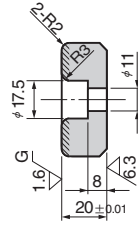
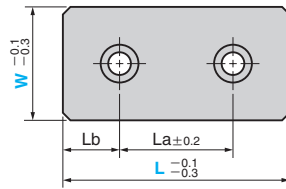
SLIDE PLATE

CAD FILE

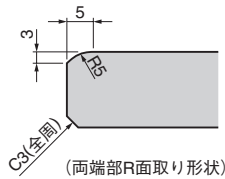
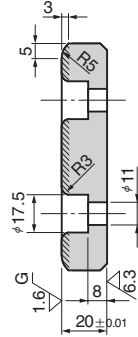
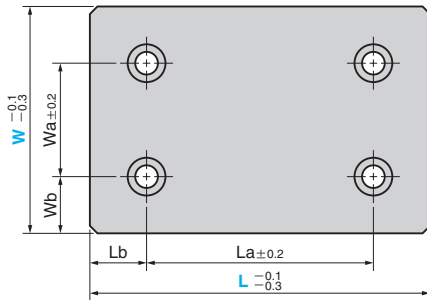
SCLSP



● W = 38 ~ 75



● W = 100 以上



材質 S45C
硬さ HRC55 以上
//// 線部高周波焼入れ

Wa	Wb	La	Lb	Catalog No.	W	L
		45	15			75
		50	25		38	100
		100				150
		45	15			75
		50				100
		75			48	125
		100				150
-	-	150				200
		200				250
		25				75
		50				100
		75			75	125
		100		SCLSP		150
		150				200
		200				250
		50	25			100
		75				125
	25	100			100	150
		150				200
50		200				250
		75				125
	37.5	100			125	150
		150				200
		200				250
		100				150
100	25	150			150	200
		200				250



Order

Catalog No. **SCLSP** W **38** - L **75**