

Punch Stripper Unit Compact Type

PUNCH STRIPPER UNIT

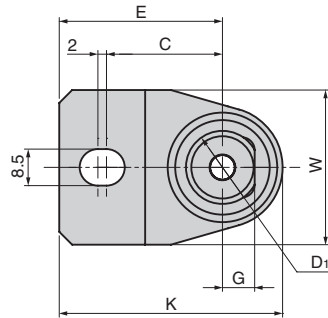
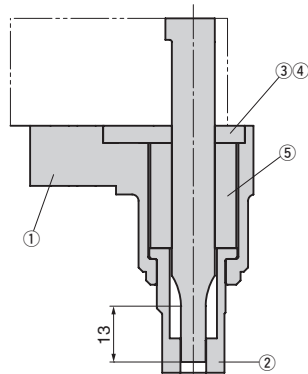
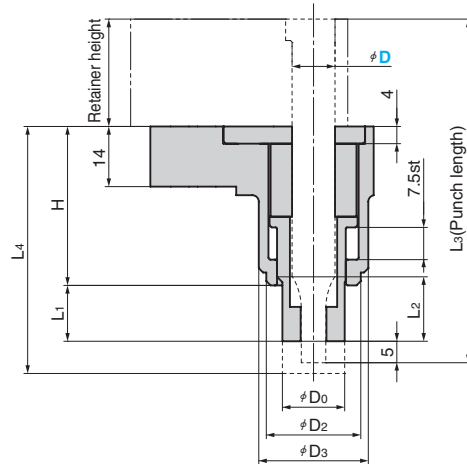
NEW CAD FILE

Light Load : 1,000,000-stroke model

- PSCLB (Bushing blank type)
- PSCLA (Round hole)
- PSCLR (Square hole with radius)
- PSCLE (Oblong hole)

Middle load : 300,000-stroke model

- PSCMB (Bushing blank type)
- PSCMA (Round hole)
- PSCMR (Square hole with radius)
- PSCME (Oblong hole)



Catalog No.	D	Punch length L ₃	Travel S (mm)	Initial Load N (kgf)	Stripper Force N (kgf) Note1	Maximum Return Force N (kgf)	Spring Constant N/mm (kgf/mm)	Spring type
PSCL	10	80	7.5	33 (3.3)	197 (20.1)	526 (53.6)	65.7 (6.7)	SWL22-25
		90						
		100						
PSCL	13	80	7.5	49 (5)	294 (30)	785 (80.1)	98.1 (10)	SWL27-25
		90						
		100						
PSCM	10	80	7.5	59.5 (6)	357 (36.4)	952 (97.1)	119 (12.1)	SWM22-25
		90						
		100						
PSCM <Note 2>	13	80	7.5	89.5 (9.1)	537 (54.7)	1432 (146.1)	179 (18.3)	SWM27-25
		90						
		100						

*<Note 1> : When pad stroke is set to 2.5 mm

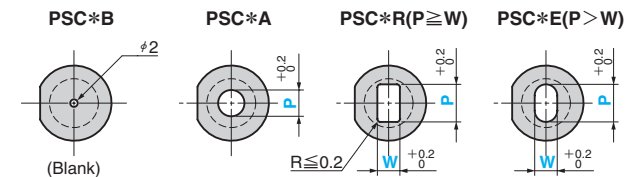
*<Note 2> : This is a 300,000-stroke model. The spring must be replaced after 300,000 stroke.

D	Punch length L ₃	Retainer heights	H	L ₁	L ₂	L ₄	C	E	G	D ₀	D ₁	D ₂	D ₃	W	K
80	10	25	37	13	12	57.5	27	38	7.5	14.5	17	22	25.5	36	52
		30		8	7	52.5									
		(32)		12	11	56.5									
90	10	35(41)	37	3	2	47.5	27	38	7.5	14.5	17	22	25.5	36	52
		25		23	22	67.5									
		30		18	17	62.5									
100	10	(32)	37	22	21	66.5	27	38	7.5	14.5	17	22	25.5	36	52
		35(41)		13	12	57.5									
		25		33	32	77.5									
80	10	30	37	28	27	72.5	27	38	7.5	14.5	17	22	25.5	36	52
		(32)		32	31	76.5									
		35(41)		23	22	67.5									
90	10	25	37	13	12	57.5	30	39	9	17.5	20	26	33	35	56.5
		30		18	17	62.5									
		(32)		22	21	66.5									
100	10	35(41)	37	13	12	57.5	30	39	9	17.5	20	26	33	35	56.5
		25		23	22	67.5									
		30		28	27	72.5									
80	10	30	37	28	27	72.5	30	39	9	17.5	20	26	33	35	56.5
		(32)		32	31	76.5									
		35(41)		23	22	67.5									

* The figures in parentheses () are for ball lock retainers.

Pad hole shape

Set the hole size with the pierce diameter +0.1mm or more.



* Use PSCLB/PSCMB with the additional processing of the pad hole shape.

* Set the entry of the pierce to 5mm or less.

D	Punch length L ₃	Increments of 0.1 mm				
		PSC*A	PSC*R		PSC*E	
		P	P	W	P	W
10	80	3.0~11.0	3.0~8.0	3.0~8.0	3.1~11.0	3.0~10.8
	90					
	100					
13	80	3.0~14.0	3.0~10.1	3.0~10.1	3.1~14.0	3.0~13.8
	90					
	100					



Order	Catalog No.	Hole shape	D	Punch length	Retainer heights	Hole dimensions	Option
	PSCL	B	10	80	32		
	PSCL	A	10	90	41		P6.5
	PSCM	R	13	100	35		P8.2-W6.0 - RA120