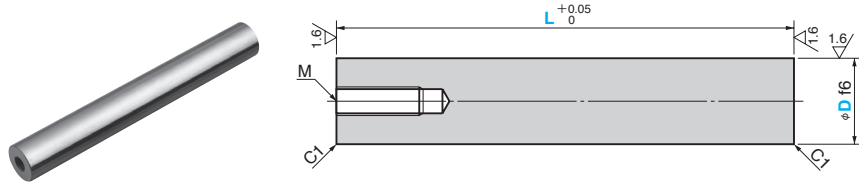


Ejector Guide Pin

STRAIGHT TYPE(WITH TAP)

RoHS

EGPA



Material : SUJ2 (B1 A 52100)
 Hardness : HRC58 or more
 Induction Hardened

D f6	M	Catalog No.	D	L (Increments of 5 mm)
25	M10 depth 20	EGPA	25	50~100
				105~125
				130~150
				155~175
				180~200
				205~225
				230~250
				255~275
				280~300
				330~350
30	M12 depth 25	EGPA	30	50~100
				105~125
				130~150
				155~175
				180~200
				205~225
				230~250
				255~275
				280~300
				330~350
35	M12 depth 25	EGPA	35	50~100
				105~125
				130~150
				155~175
				180~200
				205~225
				230~250
				255~275
				280~300
				330~350

D f6	M	Catalog No.	D	L (Increments of 5 mm)
40	M12 depth 25	EGPA	40	105~125
				130~150
				155~175
				180~200
				205~225
				230~250
				255~275
				280~300
				305~325
				330~350
50	M12 depth 25	EGPA	50	105~125
				130~150
				155~175
				180~200
				205~225
				230~250
				255~275
				280~300
				305~325
				330~350
60	M12 depth 25	EGPA	60	105~125
				130~150
				155~175
				180~200
				205~225
				230~250
				255~275
				280~300
				305~325
				330~350



Order

Catalog No. **EGPA** D **25** - L **200**

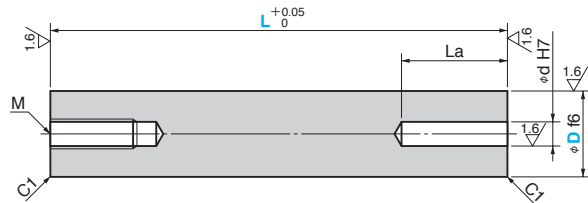
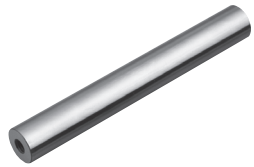
Ejector
Related Parts

Ejector Guide Pin

STRAIGHT TYPE(WITH TAPPED HOLE / DOWEL HOLE)

RoHS

EGPB



Material : SUJ2 (I B1 A 52100)
Hardness : HRC58 or more
Induction Hardened

D f6	d H7	La	M	Recommended Dowel Pin(h7)	Catalog No.	D	L (Increments of 5 mm)
25	-0.020 -0.033	10	+0.015 0	20	M10 depth 20	10×40	50~100
							105~125
							130~150
							155~175
							180~200
							205~225
							230~250
							255~275
							280~300
							300~320
30	-0.025 -0.041	16	+0.018 0	25	M12 depth 25	16×50	50~100
							105~125
							130~150
							155~175
							180~200
							205~225
							230~250
							255~275
							280~300
							300~320
35	-0.025 -0.041	16	+0.018 0	25	M12 depth 25	16×50	50~100
							105~125
							130~150
							155~175
							180~200
							205~225
							230~250
							255~275
							280~300
							300~320

D f6	d H7	La	M	Recommended Dowel Pin(h7)	Catalog No.	D	L (Increments of 5 mm)
40	-0.025 -0.041	16	+0.018 0	25	M12 depth 25	16×50	105~125
							130~150
							155~175
							180~200
							205~225
							230~250
							255~275
							280~300
							305~325
							330~350
50	-0.025 -0.041	16	+0.018 0	25	M12 depth 25	16×50	105~125
							130~150
							155~175
							180~200
							205~225
							230~250
							255~275
							280~300
							305~325
							330~350
60	-0.030 -0.049	16	+0.018 0	25	M12 depth 25	16×50	105~125
							130~150
							155~175
							180~200
							205~225
							230~250
							255~275
							280~300
							305~325
							330~350



Order

Catalog No. **EGPB** D **30** - L **250**