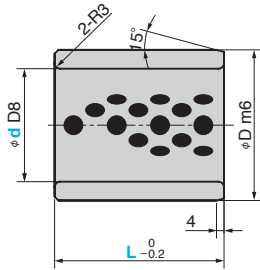
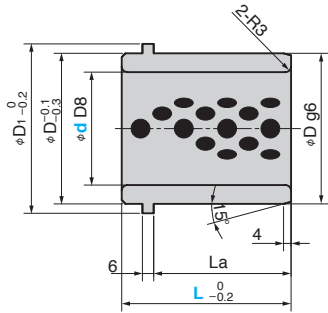


RGBD (Straight Type)



RGBTD (Flange Type)



● Sliding Direction



• Recommended tolerance for drilled hole H7

Material : Bronze with Graphite(SO#50 SP2)

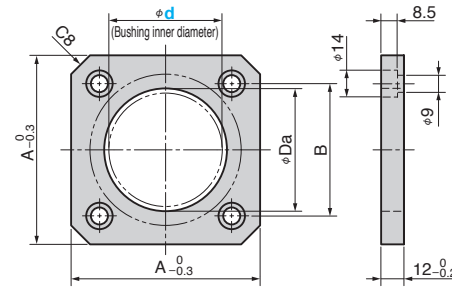
■ Tolerance of outer diameter ϕD

D	RGBD	RGBTD	d D8	D	D ₁	La	Catalog No.	d	L		
	Tolerance m6	Tolerance g6									
80	+0.030	-0.010	60	80	90	53	RGBD	60	70		
	+0.011	-0.029							73		
100	+0.035	-0.012	80	100	110	80	RGBTD	80	100		
									+0.013	-0.034	100
											120

Order -
 -

■ Guide Bushing Loosening Lock Plate (for Straight Type)

GBSP



A	B	Da	Bushing outer diameter D	Catalog No.	d
90	70	65	80	GBSP	60
110	90	85	100		80

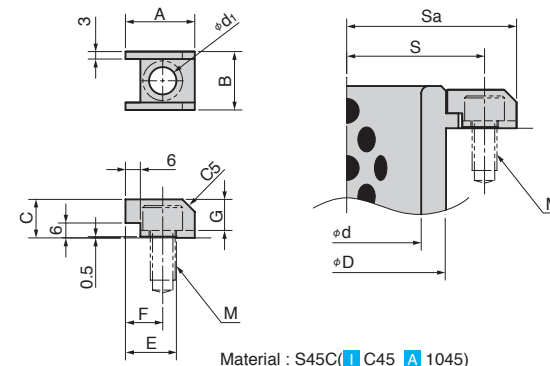


Order

Material : S45C (I C45 A 1045)
 Surface Treatment : Black oxide

■ Guide Bushing Loosening Lock Plate (for Flange Type)

SNG



Guide Bushing		M	S	Sa
d	D			
60	80	M8	54	65.1
		M10	55.5	68.4
80	100	M8	65	76.1
		M10	66.5	79.4

Material : S45C (I C45 A 1045)

A	B	d ₁	C	E	F	G	M	Catalog No.
24.6	18.9	9	13	18	13.5	10	M8	SNG720000
27.9	23.5	11	15.5	20.5	15	12.5	M10	SNG730000



Order