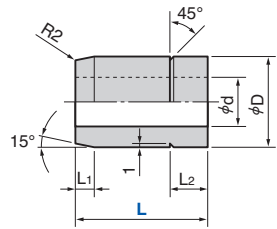


Retainer, Spacer

Pressure Source Components

SORTA

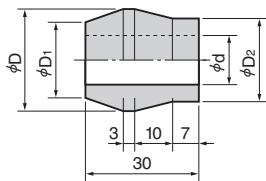


〈Material〉 SS400 or S25C

Catalog No.	Nominal	L	D	d	L ₁	L ₂	Applicable Rubber Spring, Urethane Spring	
							Outer Diameter	Length
SORTA	14	10	16	9	2	3	30, 40	~40
		20			3	7	30~63	50~63
	20	30	22	13	5	10	60~	60~125
		35	24				70~100	60~200



Catalog No. **SORTA** Nominal **20** — L **30**
 Order

SORTB



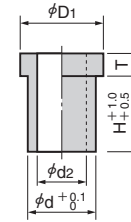
〈Material〉 SS400 or S25C

Catalog No.	Nominal	D	D ₁	D ₂	d	Outer Diameter	
						SORTB	14
	22	27	20	22	13	80	100

 When installing SORTB, set the straight part to the fixed surface side.



Catalog No. **SORTB** Nominal **14**
 Order

K

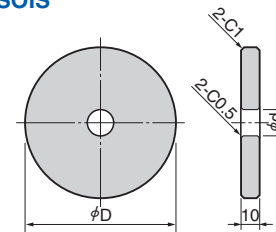


〈Material〉 SS400

Catalog No.	Nominal	D ₁	d	d ₂	H	T
K	10	19.5	15	11	12	5
	12	22	18	13	20	6


Catalog No. **K** Nominal **10**
 Order


SOIS



〈Material〉 Neodel (#25-61N)

Catalog No.	Nominal	D	d	Applicable Rubber Spring, Urethane Spring		
				Outer Diameter	Inner Diameter	Guide Pin Diameter
SOIS	50	65	13	30	40	50
	63			60	63	14
	80	100	21	70	80	20
	100			90	100	110

 Guide pins should be S25C equivalent or better and finished within Ra1.6.


Catalog No. **SOIS** Nominal **63**
 Order