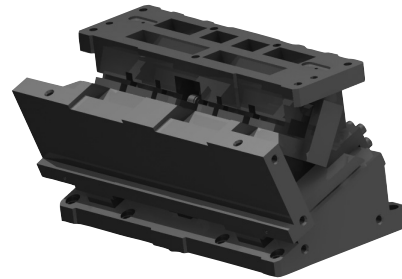


KCMSL [Overview]

Large Type

Product Information

- Mount face widths from 500 to 1000 mm in 100 mm increments.
- Working angles from 0° to 20° in 5° increments.
- Gas Spring is removable from the rear without disassembling.
- 1600 mm wide or smaller available on demand.



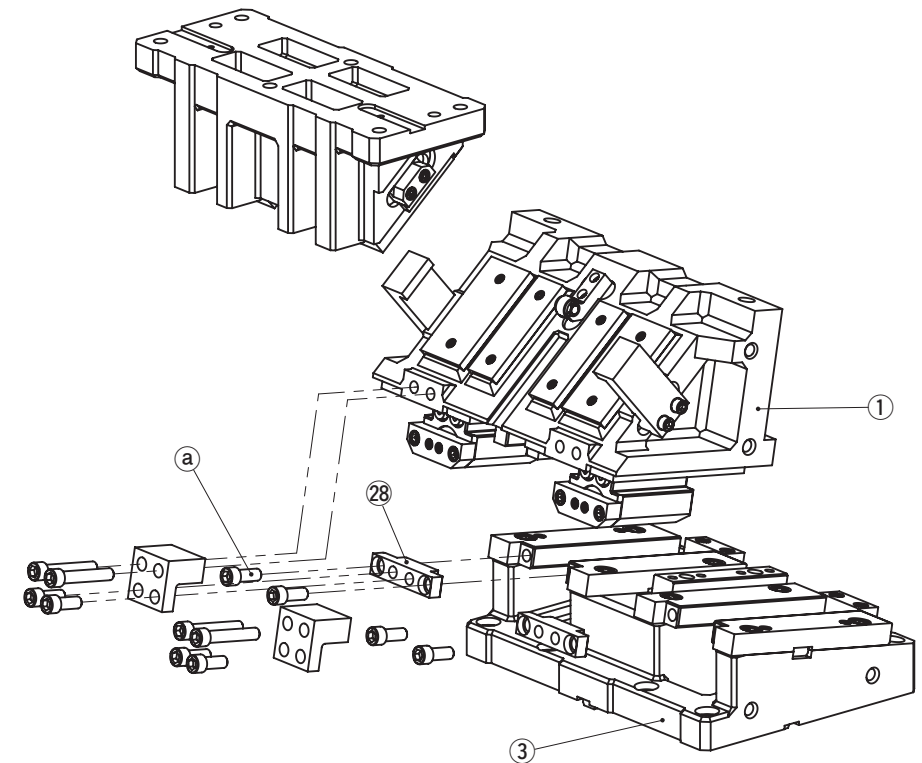
Mount face		Working Angle	Travel	Working Force kN (tonf)	Spring Force N (kgf)
W	H				
500 600	180	00	60	313.6 (32.0)	19600.0 (2000.0)
		05			
		10			
		15			
700 800	180	20	60	470.4 (48.0)	19600.0 (2000.0)
		00			
		05			
		10			
900 1000	180	15	60	627.2 (64.0)	39200.0 (4000.0)
		20			
		00			
		05			

For Pierce

For Trim

For Flange

KCMSL500/KCMSL600, KCMSL700/KCMSL800 Assembly Instructions



● Disassembly

- 1) Remove Hexagon Socket Head Bolts (a), to pull out Stopper Plate (28).
- 2) Pull out and remove Cam Slider (1) from Cam Holder (3) to the rear.

● Assembly

Assembly is the reverse procedure of disassembly.

- Ensure that all parts are clean, particularly the sliding components to which a small amount of lubricant is applied and is then placed in position.
- Take care that the respective tolerances are observed when assembling Cam Slider and Cam Holder, which also should be identified by the same serial number.
- Make sure that all bolts are tighten to the recommended torque after assembly and disassembly.

⚠ Gas Spring

Please contact your local sales representative if you prefer to use a gas spring not specified in our catalog. For use and maintenance of gas spring, please contact the manufacturer directly.

KCMSL [Overview]

Large Type

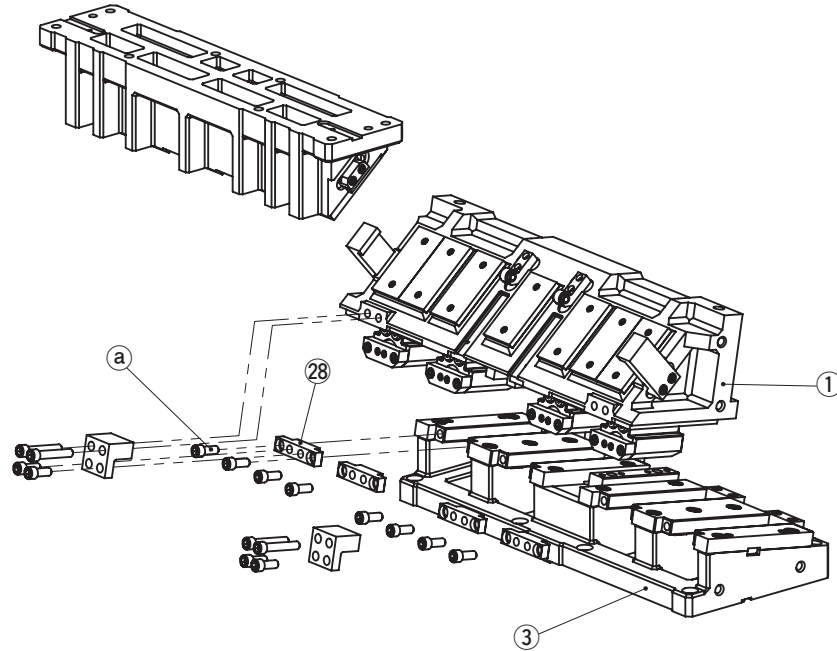
For Pierce

For Trim

For Flange

Product Information

■KCMSL900/KCMSL1000 Assembly Instructions



This page intentionally left blank

● Disassembly

- 1) Remove Hexagon Socket Head Bolts (a), to pull out Stopper Plate (28).
- 2) Pull out and remove Cam Slider (1) from Cam Holder (3) to the rear.

● Assembly

Assembly is the reverse procedure of disassembly.

- Ensure that all parts are clean, particularly the sliding components to which a small amount of lubricant is applied and is then placed in position.
- Take care that the respective tolerances are observed when assembling Cam Slider and Cam Holder, which also should be identified by the same serial number.
- Make sure that all bolts are tighten to the recommended torque after assembly and disassembly.

Gas Spring

Please contact your local sales representative if you prefer to use a gas spring not specified in our catalog. For use and maintenance of gas spring, please contact the manufacturer directly.

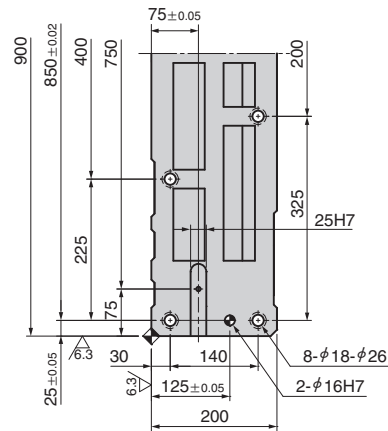
KCMSL

Large Type

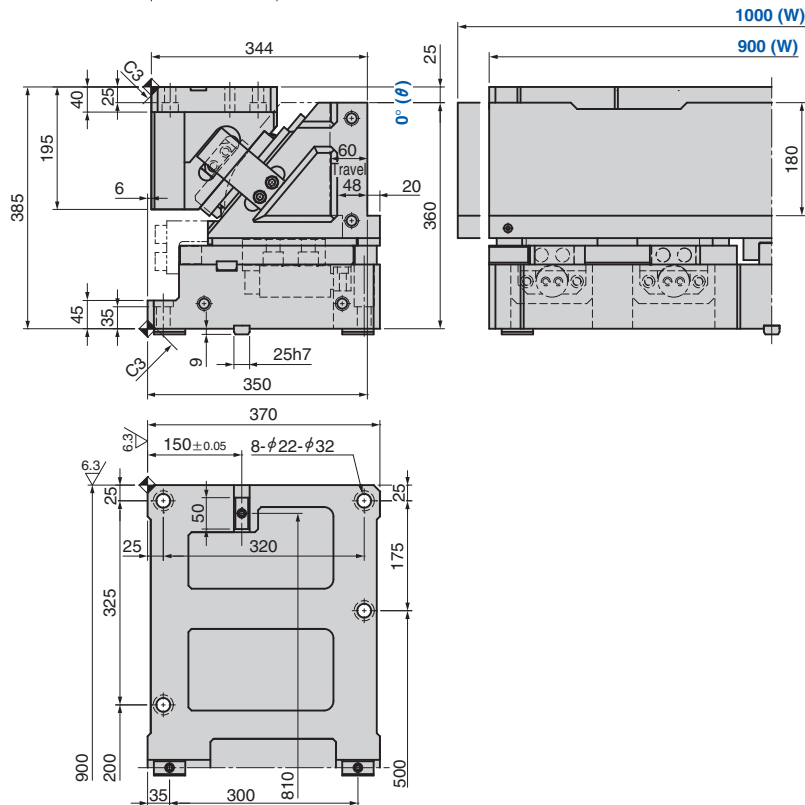
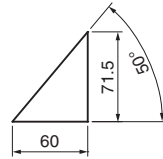
Die Mounted Cam Unit

For Pierce For Trim For Flange

KCMSL900-00 / KCMSL1000-00



● Cam Diagram



Travel S	Working Force kN (tonf)	Spring Force [N (kgf)]		Catalog No.	W	θ	Spring Type PS
		Initial Load	Final Load				
60.0	627.2 (64.0)	-	40400 (4120)	KCMSL	900 1000	00	GK NGK
		-	39200 (4000)				GD NGD

GK: Gas Spring (KALLER) GD: Gas Spring (DADCO)
NGK/NGD: Without Gas Spring Parts for spring assembly are included.



Order

Catalog No.	W	θ	PS	Option
KCMSL	900	00	GK	
KCMSL	1000	00	NGK	
KCMSL	900	00	GK	NF



Option

Option Code	Specification
NF	Nitrogen gas not charged.

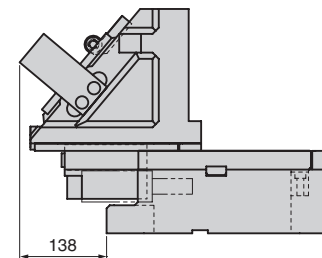
Spring Specification

No.	PS	Spring Model	Qty	Remark
13	GK	K750-80	4	Gas Spring (KALLER)
	GD	L750.075.TO.140	4	Gas Spring (DADCO)

Weight

W	Cam Slider Weight kg	Total Weight kg
900	276.0	571
1000	283.9	579

Rear Removal Space



Refer to page 1091 for Table of Components.

KCMSL

Large Type

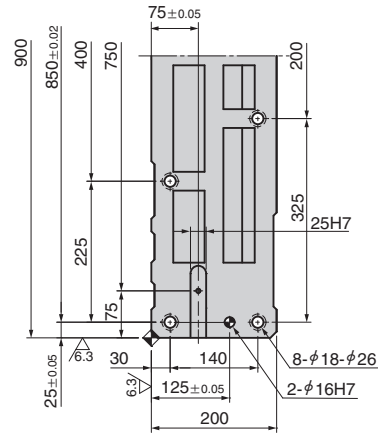
Die Mounted Cam Unit

For Pierce

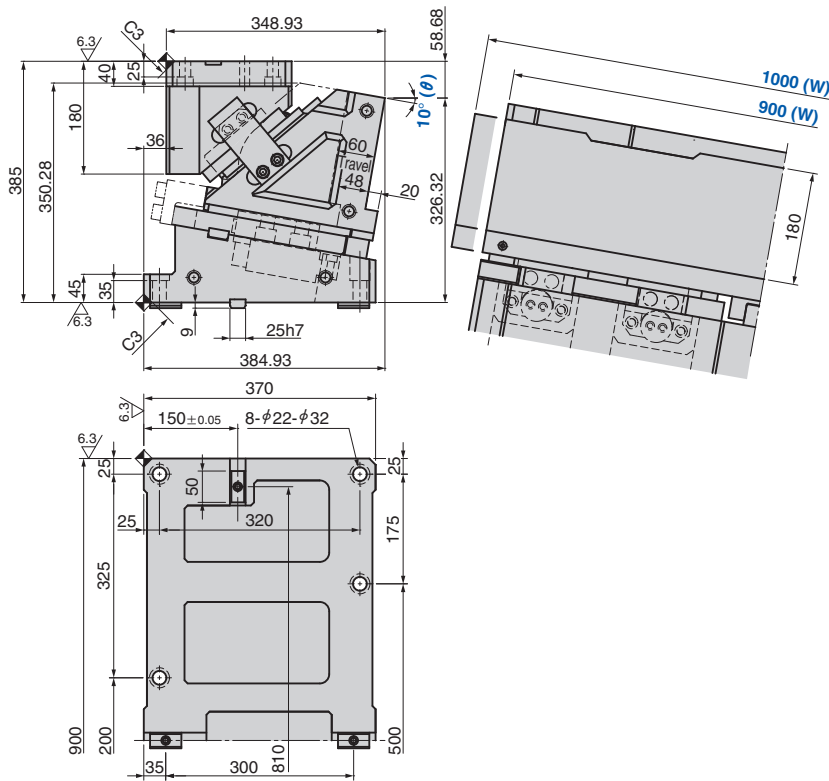
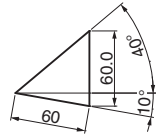
For Trim

For Flange

KCMSL900-10 / KCMSL1000-10



● Cam Diagram



Travel S	Working Force kN (tonf)	Spring Force [N (kgf)]		Catalog No.	W	θ	Spring Type PS
		Initial Load	Final Load				
60.0	627.2 (64.0)	-	40400 (4120)	KCMSL	900 1000	10	GK NGK
		-	39200 (4000)				GD NGD

GK: Gas Spring (KALLER) GD: Gas Spring (DADCO)
NGK/NGD: Without Gas Spring Parts for spring assembly are included.



Order

Catalog No.	W	θ	PS	Option
KCMSL	900	10	GK	
KCMSL	1000	10	NGK	
KCMSL	900	10	GK	- NF



Option

Option Code	Specification
NF	Nitrogen gas not charged.

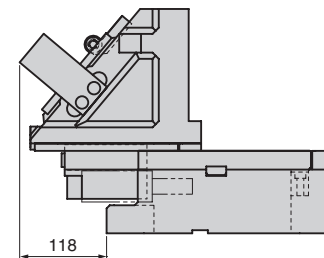
Spring Specification

No.	PS	Spring Model	Qty	Remark
13	GK	K750-80	4	Gas Spring (KALLER)
	GD	L750.075.TO.140	4	Gas Spring (DADCO)

Weight

W	Cam Slider Weight kg	Total Weight kg
900	276.0	551
1000	283.9	560

Rear Removal Space



Refer to page 1091 for Table of Components.

KCMSL

Large Type

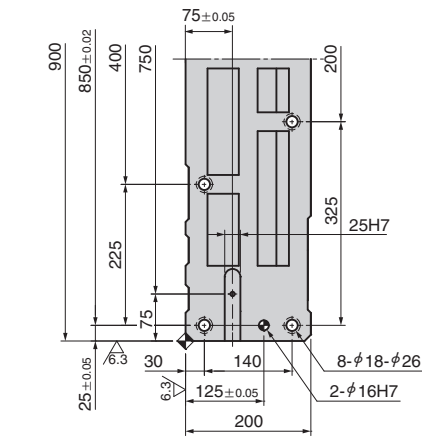
Die Mounted Cam Unit

For Pierce

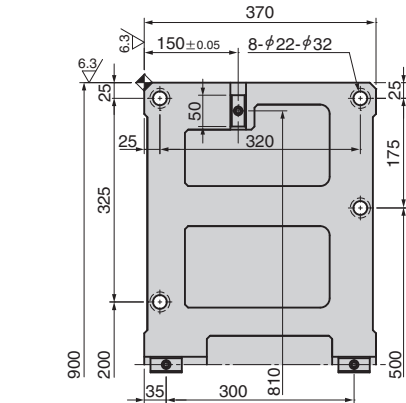
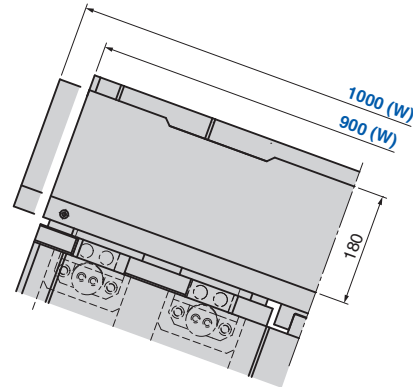
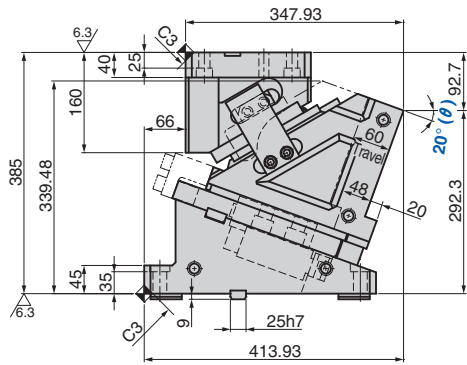
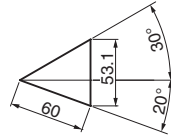
For Trim

For Flange

KCMSL900-20 / KCMSL1000-20



● Cam Diagram



Travel S	Working Force kN (tonf)	Spring Force [N (kgf)]		Catalog No.	W	θ	Spring Type PS
		Initial Load	Final Load				
60.0	627.2 (64.0)	—	40400 (4120)	KCMSL	900 1000	20	GK NGK
		—	39200 (4000)				GD NGD

GK: Gas Spring (KALLER) GD: Gas Spring (DADCO)
NGK/NGD: Without Gas Spring Parts for spring assembly are included.



Order

Catalog No.	W	θ	PS	Option
KCMSL	900	20	GK	
KCMSL	1000	20	NGK	
KCMSL	900	20	GK	NF



Option

Option Code	Specification
NF	Nitrogen gas not charged.

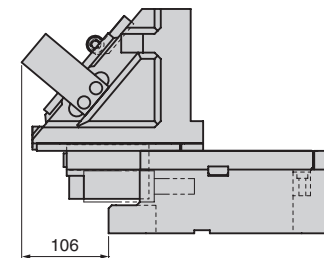
Spring Specification

No.	PS	Spring Model	Qty	Remark
13	GK	K750-80	4	Gas Spring (KALLER)
	GD	L750.075.TO.140	4	Gas Spring (DADCO)

Weight

W	Cam Slider Weight kg	Total Weight kg
900	276.0	536
1000	283.9	544

Rear Removal Space



Refer to page 1091 for Table of Components.

KCMSL [Table of Components]

Large Type

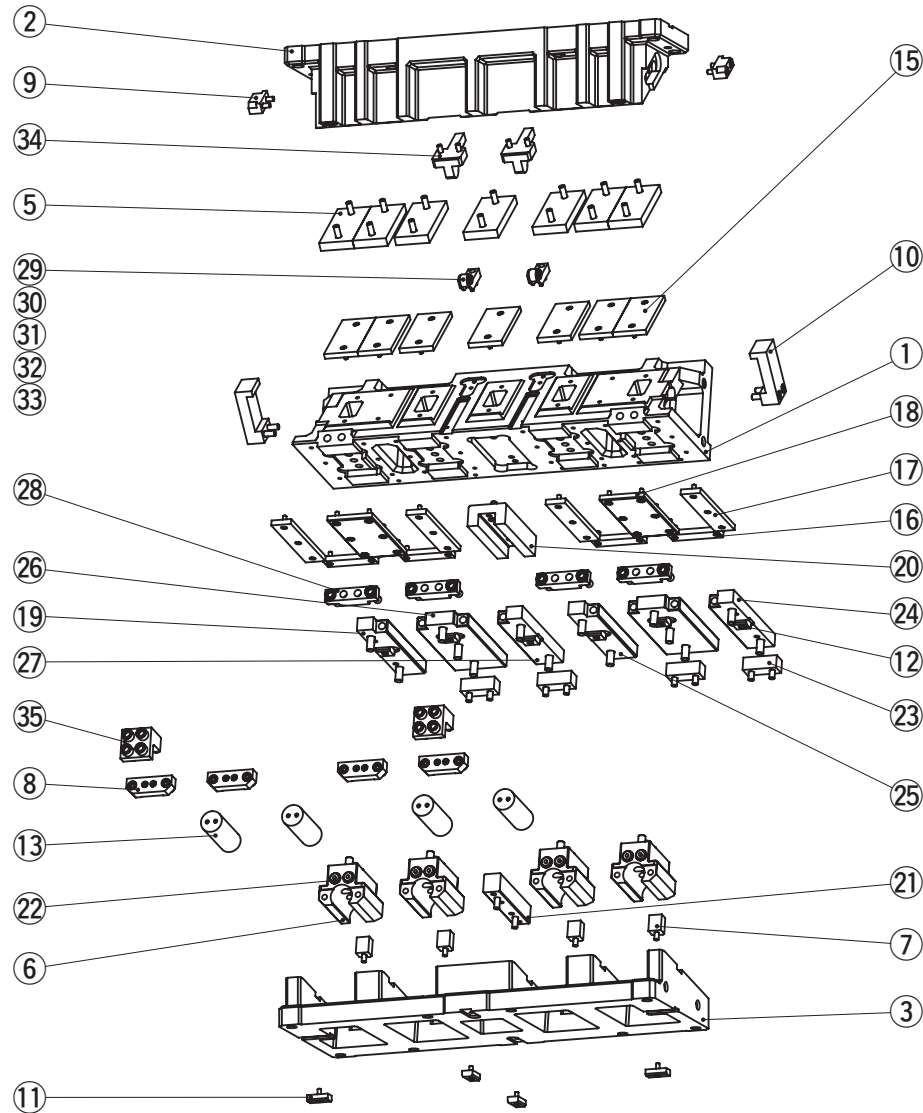
For Pierce

For Trim

For Flange

Die Mounted Cam Unit

KCMSL900/KCMSL1000



No.	Description	Qty	Material and Remark
1	Cam Slider	1	Cast Iron
2	Cam Driver	1	Cast Iron
3	Cam Holder	1	Cast Iron
5	Cam Driver Plate B	7	Bronze with Graphite
6	Spring Guide	4	Bronze with Graphite
7	Guide Pin Block	4	Steel
8	Spring Guide Plate	4	Steel
9	Positive Return Block	2	Bronze with Graphite
10	Positive Return Follower	2	Steel
11	Key A	4	Steel
12	Key B	6	Steel
13	Gas Spring	4	Refer to the Spring Specification.
15	Lower Plate B	7	Steel
16	Slide Lower Plate A	4	Bronze with Graphite
17	Slide Lower Plate B	4	Bronze with Graphite
18	Slide Lower Plate C	2	Bronze with Graphite
19	Base Plate B R	1	Steel
20	Center Key Guide	1	Steel
21	Center Key	1	Bronze with Graphite
22	Stopper	8	—
23	Base Plate A	4	Steel
24	Base Plate B L	1	Steel
25	Base Plate C L	1	Steel
26	Base Plate D	2	Steel
27	Base Plate C R	1	Steel
28	Stopper Plate	4	Steel
29	Roller Bracket	2	Steel
30	Roller	2	Steel
31	Roller Pin	2	Steel
32	Bushing	2	SOB12-18-16
33	E Type Snap Ring	4	φ 9
34	Roller Driver	2	Steel
35	Lock Plate	2	Steel

Bolts, nuts, dowels, and washers for assembly are not indicated.

Standard
Cam Units