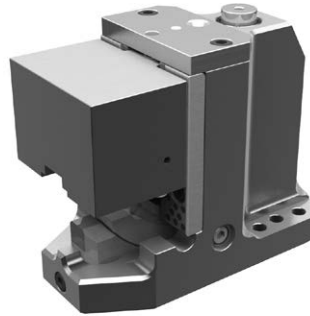


COUNTER CAM UNIT CTCC [Overview]

Compact Type

Product Information

- Mount face width 120 mm.
- Space saving.
- High rigidity by new structure.
- Easy maintenance.

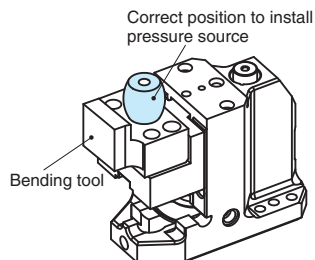
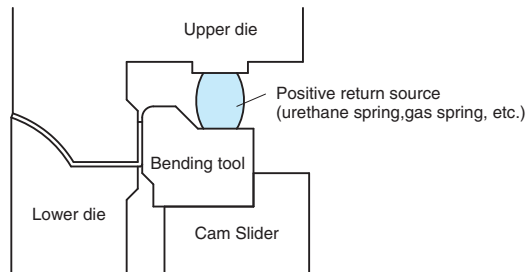


■ Features

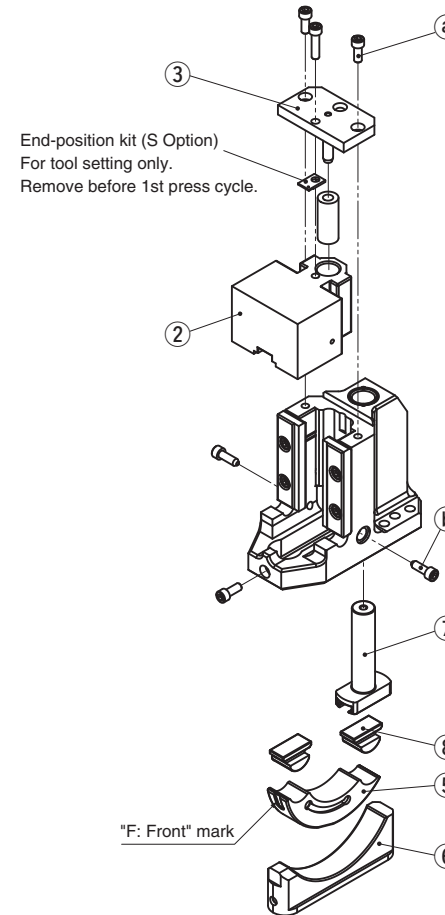
- Its compact design enables to flange panels upward even in a narrow space.
- The new structure prevents the stress concentration, which does not require to install a backup.
- The end-position kit and spring can be assembled or disassembled with the whole unit mounted on the die.
- The elimination of the box-type holder enables to avoid interferences with front objects.

■ DESIGN ONLY

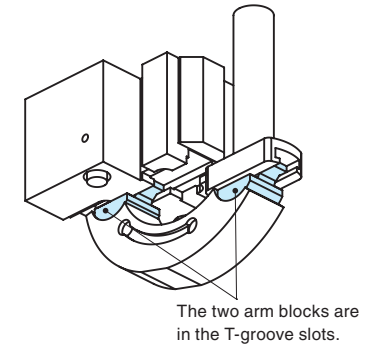
In order to make the Counter Cam Unit correctly track the up-down motion of the press, use a return assist pressure source (Urethane Spring, Gas Spring, etc.) (See the figure below.)



■ CTCC Assembly Instructions



〈Assembly Precautions〉



● Disassembly

- 1) Remove Hexagon Socket Head Bolts (a), to pull out Stopper Plate (3).
- 2) Pull and remove Cam Slider (2) upward.
- 3) Remove Hexagon Socket Head Bolts (b). With Cam Main Unit laid down horizontally, use the M10 tap at the bottom of Arm Guide (6) to pull it out.
- 4) Disassemble Arm (5), Arm Block (8) and Driver Pin (7).

● Assembly

- Assembly is the reverse procedure of disassembly.
- Ensure that all parts are clean, particularly the sliding components to which a small amount of lubricant is applied and is then placed in position.
 - Make sure that all bolts are tighten to the recommended torque after assembly and disassembly.
- Note: Make sure to assemble the arm with engraved "F" (= Front) mark facing in the correct direction.

⚠ Assembly Precautions

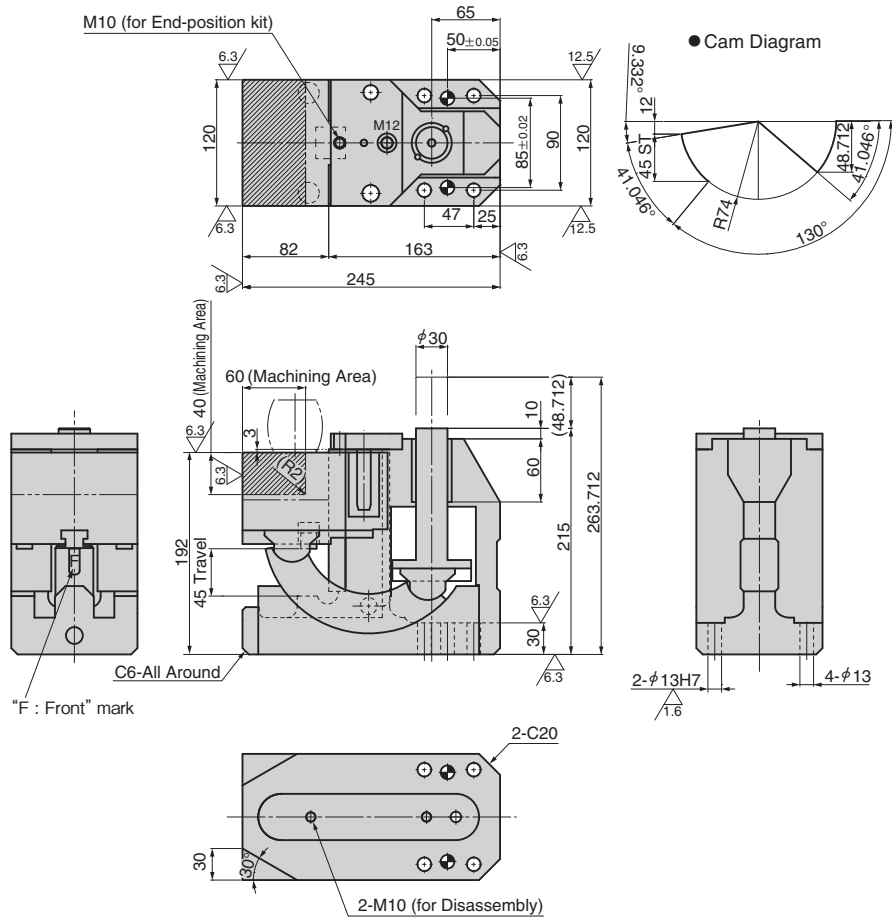
Make sure to install the two arm blocks into each T-groove slot of the cam slider and the driver pin as shown to the right.

CTCC

Compact Type

Counter Cam Unit

CTCC120-45



| Working Force kN (tonf) 1,000,000 strokes | Spring Force N (kgf) | | Total Weight kg | Catalog No. | W | Travel S |
|---|-------------------------|-----------------|-----------------------|-------------|------------|-------------|
| | Initial Load | Final Load | | | | |
| 9.8 (1.0) | 150.7 (15.3) | 574.6 (58.6) | 28.8 | CTCC | 120 | 45 |



| Catalog No. | W | S | Option |
|-------------|------------|-----------|------------|
| CTCC | 120 | 45 | N12 |



| Option Code | Specification |
|-------------|--|
| N12 | φ12 mm dowel holes provided on holder. |
| S | End-position kit is included. |

Spring Specification

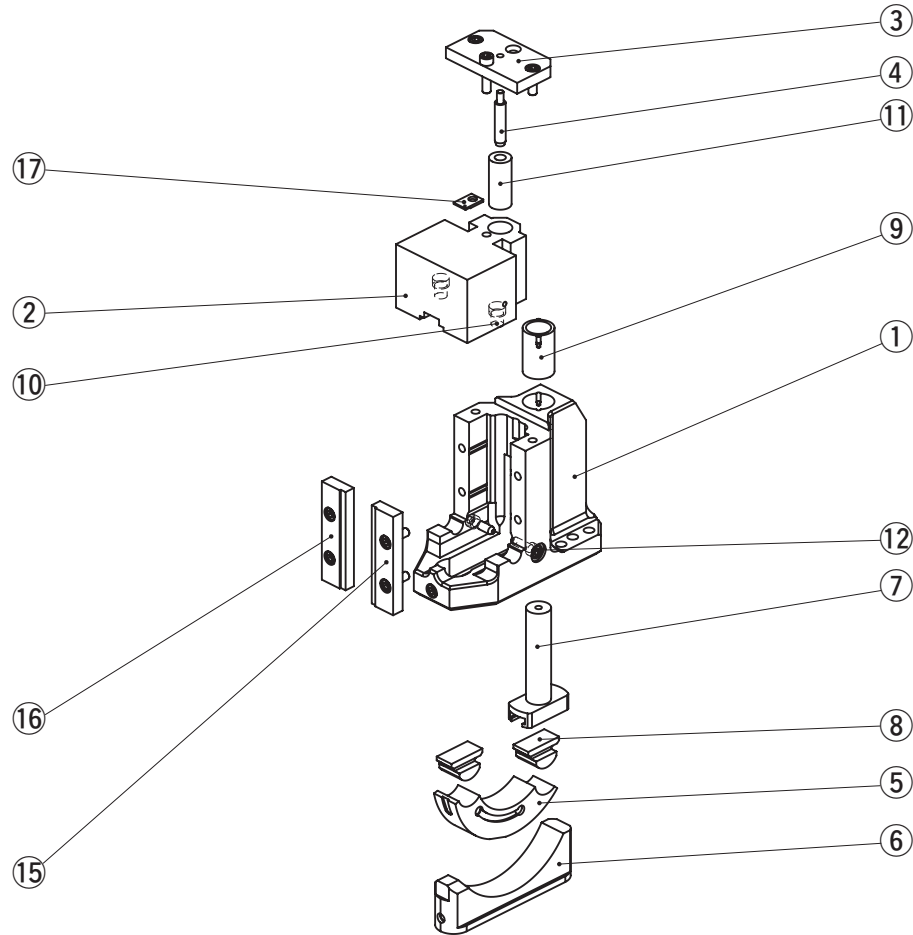
| No. | Spring Model | Qty | Remark |
|-----|--------------|-----|---|
| 11 | TF27-125 | 1 | Coil Spring 9.42 N/mm (0.96 kgf/mm) Life expectancy of Coil Spring is approximately 300,000 strokes. |

CTCC [Table of Components]

Compact Type

Counter Cam Unit

CTCC



| No. | Description | Qty | Material and Remark |
|-----|--------------------------|-----|-------------------------|
| 1 | Cam Holder | 1 | Cast Iron |
| 2 | Cam Slider | 1 | Cast Iron with Graphite |
| 3 | Stopper Plate | 1 | Steel |
| 4 | Spring Guide Pin | 1 | Steel |
| 5 | Arm | 1 | Steel |
| 6 | Arm Guide | 1 | Cast Iron with Graphite |
| 7 | Driver Pin | 1 | Steel |
| 8 | Arm Block | 2 | Bronze with Graphite |
| 9 | Oilless Bush | 1 | Bronze with Graphite |
| 10 | Stopper | 2 | - |
| 11 | Spring | 1 | TF27-125 |
| 12 | Ball Plunger | 2 | - |
| 15 | Holding Plate R | 1 | Cast Iron with Graphite |
| 16 | Holding Plate L | 1 | Cast Iron with Graphite |
| 17 | Locking Plate (S Option) | 1 | Steel |

Bolts, nuts, dowels, and washers for assembly are not indicated.