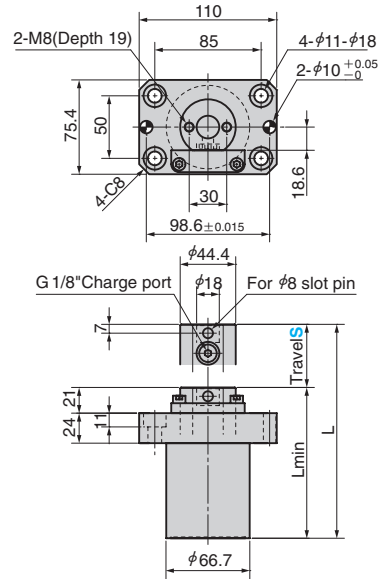


Lifter Guide Post Set

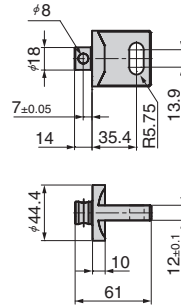
GAS SPRING TYPE FOR PROGRESSIVE DIE



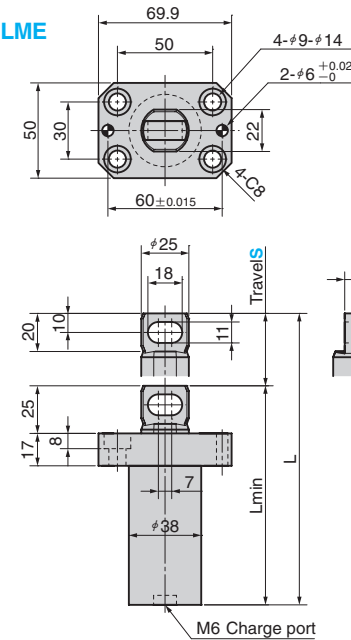
SLM



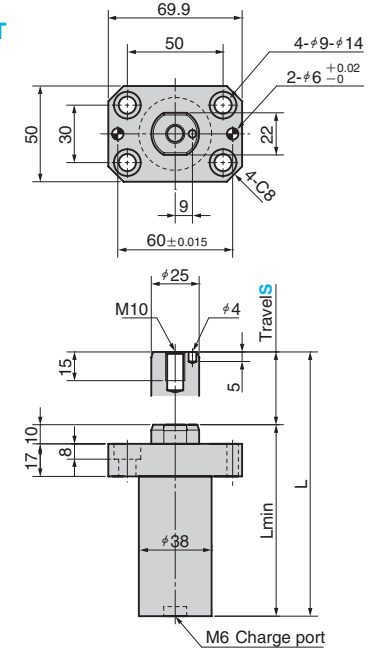
Attachment for SLM
SLCP



SLME



SLMT



Load N(kgf) (180bar/+20°C)		L	L min	Weight Kg	Catalog No.	Nominal	Travel S
Initial load	Final load						
3200 (327)	4300	146	121	3.14	SLM	300	25
	(439)	196	146	3.47			50
	4350 (444)	256	176	3.91			80
		296	196	4.21			100
		346	221	4.57			125
	396	246	4.92	150			
1700 (173)	2800 (286)	127	102	0.81	SLME	170	25
		153	115	0.88			38
		177	127	0.94			50
		240	160	1.10			80
		280	180	1.21			100
	330	205	1.35	125			
1700 (173)	2800 (286)	112	87	0.79	SLMT	170	25
		138	100	0.86			38
		162	112	0.92			50
		225	145	1.09			80
		265	165	1.19			100
	315	190	1.33	125			



Order

Catalog No.	D	L
SLM	300	125
SLME	170	80
SLCP	300	

Attachment for SLM300, SLCP

Weight Kg	Catalog No.	Nominal
0.04	SLCP	300

● Oblong hole attachment of SLM300. It is mouted at the end of installation of the lifter bar or guide raii.



Example

