

# Lifter

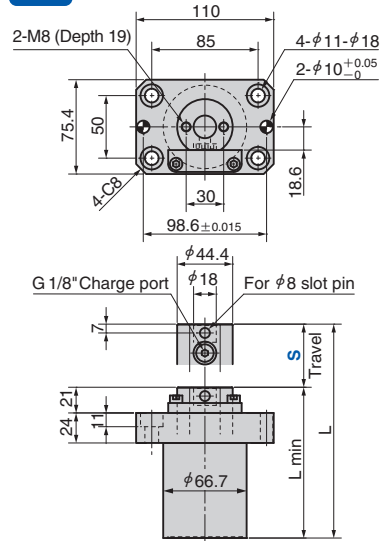
## Gas Spring Type for Progressive Die

### Panel Transfer Components



SLM

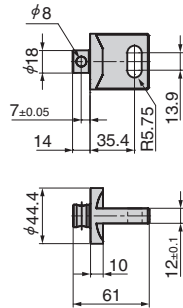
CAD FILE



● Attachment for SLM

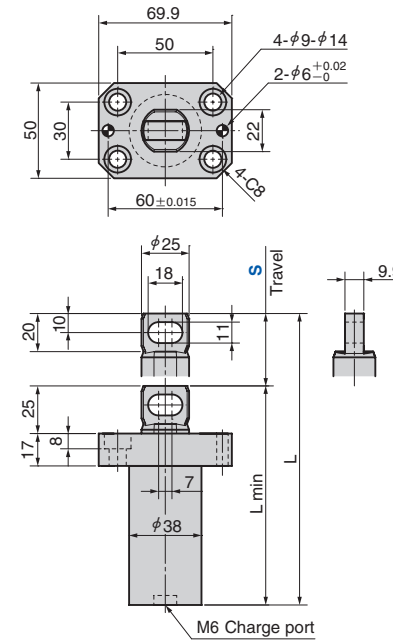
SLCP

CAD FILE



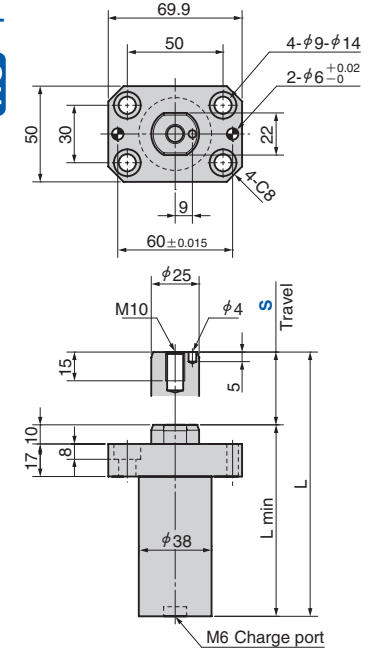
SLME

CAD FILE



SLMT

CAD FILE



Catalog No.	Nominal	Travel S	Load [N (kgf)] 180bar/+20°C		L	L min	Weight kg
			Initial Load	Final Load			
SLM	300	25		4300	146	121	3.14
		50		(439)	196	146	3.47
		80	3200		256	176	3.91
		100	(327)	4350	296	196	4.21
		125	(444)	346	221	4.57	
SLME	170	150			396	246	4.92
		25			127	102	0.81
		38			153	115	0.88
		50	1700	2800	177	127	0.94
		80	(173)	(286)	240	160	1.10
SLMT	170	100			280	180	1.21
		125			330	205	1.35
		25			112	87	0.79
		38			138	100	0.86
		50	1700	2800	162	112	0.92
		80	(173)	(286)	225	145	1.09
		100			265	165	1.19
		125			315	190	1.33

Catalog No.	Nominal	Weight kg
SLCP	300	0.04

Oblong hole attachment of SLM300. It is mounted at the end for installation of the lifter bar or guide rail.

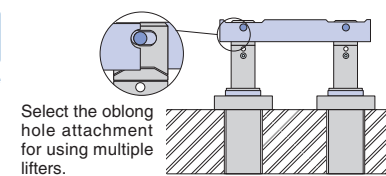


Order

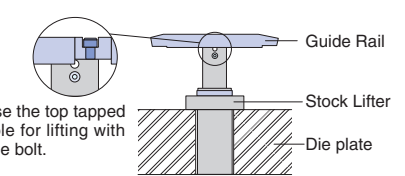
Catalog No.	Nominal	S
SLM	300	125
SLME	170	80
SLCP	300	



Example



Select the oblong hole attachment for using multiple lifters.



Use the top tapped hole for lifting with one bolt.