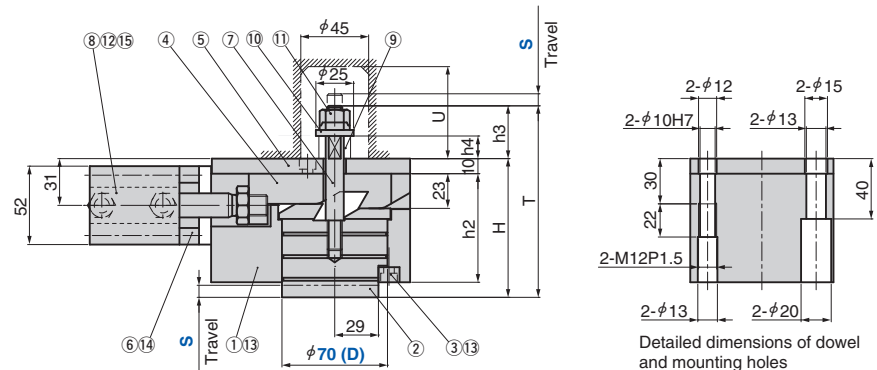
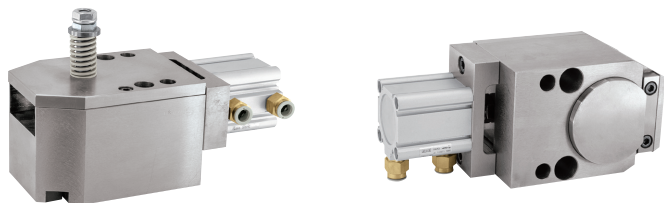


# Removable Punch Retainer Unit

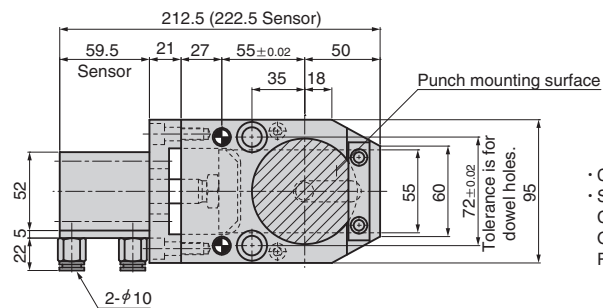
Air Type

Pierce Components

SHPUC70



Detailed dimensions of dowel and mounting holes



- Cylinder, driving pressure Min 0.5 MPa
- Sensor Specification  
Contact, 2-wire type A93L (SMC)  
Operating voltage DC12/24V  
Reed length 3 m

No.	Description	Qty	Material and Remark
1	Slide Casing	1	Steel
2	Float Pin	1	Steel
3	Key	1	Steel
4	Slide Plate	1	Steel
5	Backing Plate	1	Steel
6	Block	1	Steel
7	Stud Bolt	1	Steel
8	Air Cylinder (with out Sensor)	1	SMC (φ 40)
	Air Cylinder (Sensor)	1	SMC (φ 40)

No.	Description	Qty	Material and Remark
9	Spring	1	TR21-30 (8st) , TR21-45 (12st)
10	Washer	1	Steel
11	Hard Lock Nut	1	M10
12	Hexagon Socket Head Bolt	4	M5x60
13	Hexagon Socket Head Bolt	4	M6x15
14	Hexagon Socket Head Bolt	2	M8x25
15	Male Connector	2	SMC (h10)
16	Dowel with Female Thread	2	φ 10x60 (Accessories)
17	Screw Plug	2	M12x1.5 (Accessories)

Travel S	h2	h3	h4	H	T	U
8	72	35	15	92	127	55
12	76	42.5	22.5	100	142.5	60

Catalog No.	D	Travel S	Spring			Working force kN	Tool Installation Weight kg	Weight kg
			Initial Load N	Final Load N	Model			
SHPUC	70	8	96	207	TR21-30	54	5	8.1
		12	97	207	TR21-45	31		8.4



Order

Catalog No.	D	S	Option
SHPUC	70	8	SA
SHPUC	70	8	SA-LHC



Option

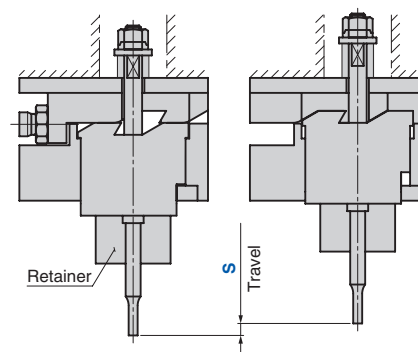
Option Code	Specification
SA	Cylinder Sensor included
LHC	The accompanying Pipe Joint is changed to L type

## Guideline for Use

- The air ports can be easily changed by rotating the cylinder mounting position.
- The limit number for joint operation is 4 units. If you want to use the unit in joint operation, please contact our sales representative.



Example

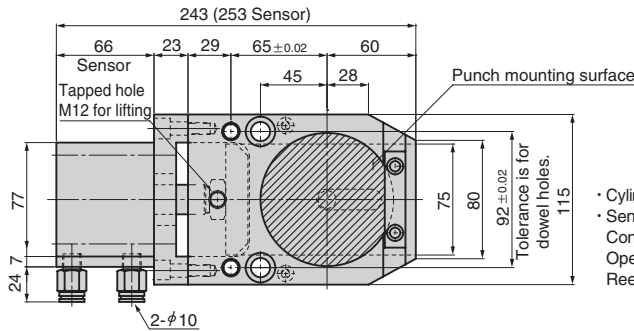
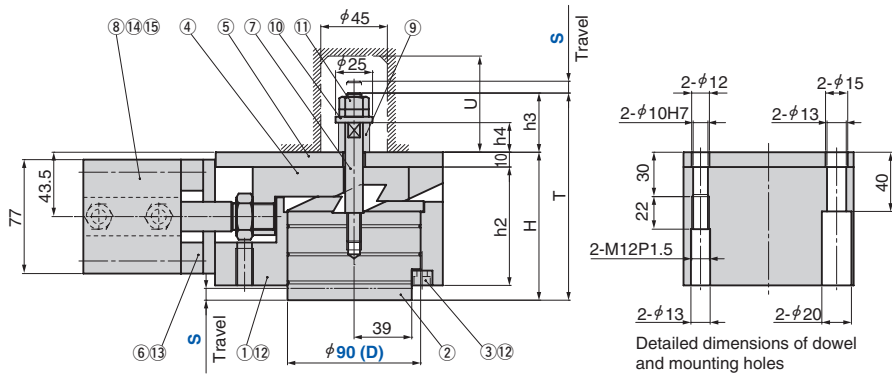
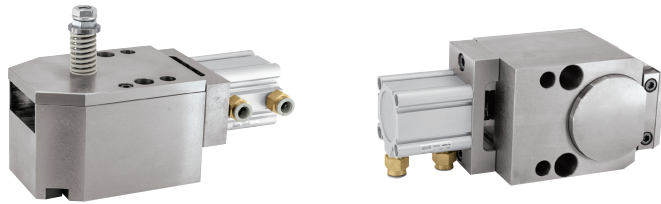


# Removable Punch Retainer Unit

Air Type

Pierce Components

SHPUC90



- Cylinder, driving pressure Min 0.5 MPa
- Sensor Specification  
Contact, 2-wire type A93L (SMC)  
Operating voltage DC12/24V  
Reed length 3 m

No.	Description	Qty	Material and Remark
1	Slide Casing	1	Steel
2	Float Pin	1	Steel
3	Key	1	Steel
4	Slide Plate	1	Steel
5	Backing Plate	1	Steel
6	Block	1	Steel
7	Stud Bolt	1	Steel
8	Air Cylinder (with out Sensor)	1	SMC (φ 63)
	Air Cylinder (Sensor)	1	SMC (φ 63)

No.	Description	Qty	Material and Remark
9	Spring	1	TR21-40 (8st) , TR21-55 (12st)
10	Washer	1	Steel
11	Hard Lock Nut	1	M10
12	Hexagon Socket Head Bolt	4	M6x15
13	Hexagon Socket Head Bolt	4	M8x25
14	Hexagon Socket Head Bolt	4	M8x65
15	Male Connector	2	SMC (φ 10)
16	Dowel with Female Thread	2	φ 10x60 (Accessories)
17	Screw Plug	2	M12x1.5 (Accessories)

Travel S	h2	h3	h4	H	T	U
8	80	40	20	100	140	55
12	84	47	27	108	155	60

Catalog No.	D	Travel S	Spring			Working force kN	Tool Installation Weight kg	Weight kg
			Initial Load N	Final Load N	Model			
SHPUC	90	8	124	207	TR21-40	64	6	15.2
		12	120	210	TR21-55	47		15.4



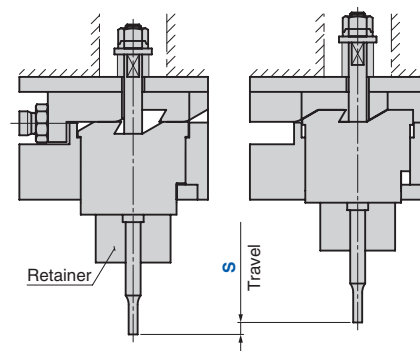
Catalog No.	D	S	Option
SHPUC	90	8	SA
SHPUC	90	8	SA-LHC



Option Code	Specification
SA	Cylinder Sensor included
LHC	The accompanying Pipe Joint is changed to L type

## Guideline for Use

- The air ports can be easily changed by rotating the cylinder mounting position.
- The limit number for joint operation is 4 units. If you want to use the unit in joint operation, please contact our sales representative.

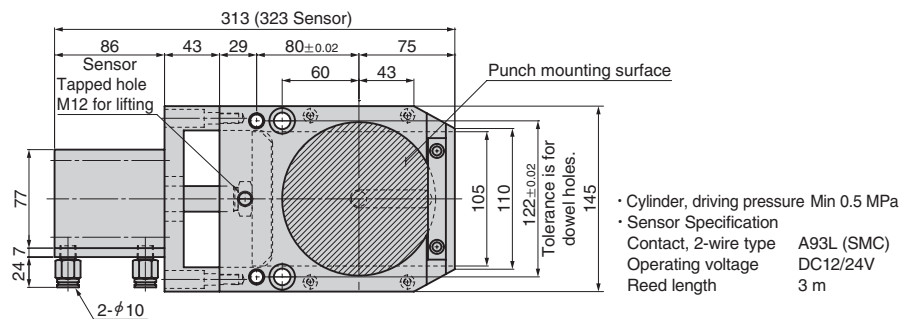
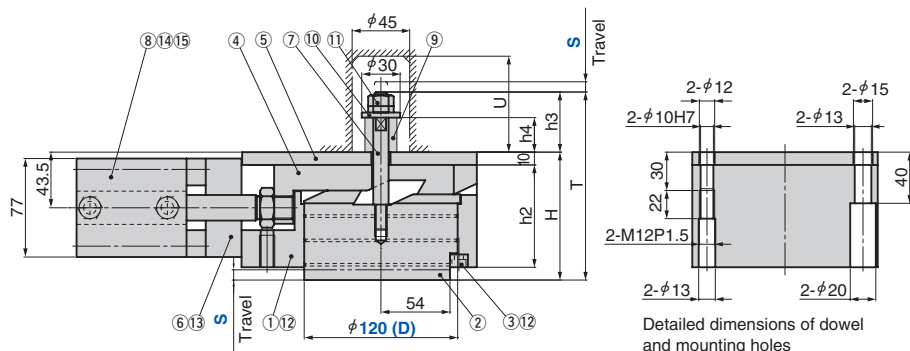
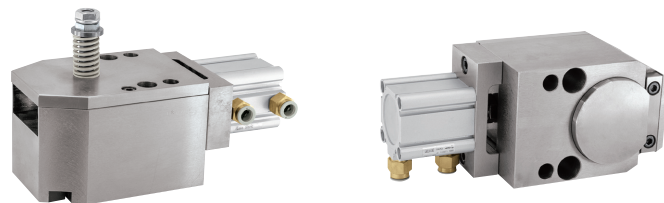


# Removable Punch Retainer Unit

Air Type

Pierce Components

SHPUC120



No.	Description	Qty	Material and Remark
1	Slide Casing	1	Steel
2	Float Pin	1	Steel
3	Key	1	Steel
4	Slide Plate	1	Steel
5	Backing Plate	1	Steel
6	Block	1	Steel
7	Stud Bolt	1	Steel
8	Air Cylinder (with out Sensor)	1	SMC (φ 63)
	Air Cylinder (Sensor)	1	SMC (φ 63)

No.	Description	Qty	Material and Remark
9	Spring	1	TF25-45 (8st) , TF25-60 (12st)
10	Washer	1	Steel
11	Hard Lock Nut	1	M10
12	Hexagon Socket Head Bolt	6	M6x15
13	Hexagon Socket Head Bolt	4	M8x25
14	Hexagon Socket Head Bolt	4	M8x85
15	Male Connector	2	SMC (φ 10)
16	Dowel with Female Thread	2	φ 10x60 (Accessories)
17	Screw Plug	2	M12x1.5 (Accessories)

Travel S	h2	h3	h4	H	T	U
8	80	47	27	100	147	60
12	84	55	35	108	163	75

Catalog No.	D	Travel S	Spring			Working force kN	Tool Installation Weight kg	Weight kg
			Initial Load N	Final Load N	Model			
SHPUC	120	8	218	392	TF25-45	179	10	21.5
		12	212	408	TF25-60	158		22.1



Order

Catalog No.	D	S	Option
SHPUC	120	8	SA
SHPUC	120	8	SA-LHC



Option

Option Code	Specification
SA	Cylinder Sensor included
LHC	The accompanying Pipe Joint is changed to L type

## Guideline for Use

- The air ports can be easily changed by rotating the cylinder mounting position.
- The limit number for joint operation is 4 units. If you want to use the unit in joint operation, please contact our sales representative.



Example

