

# Pierce Selector [Overview]

## PSR Series

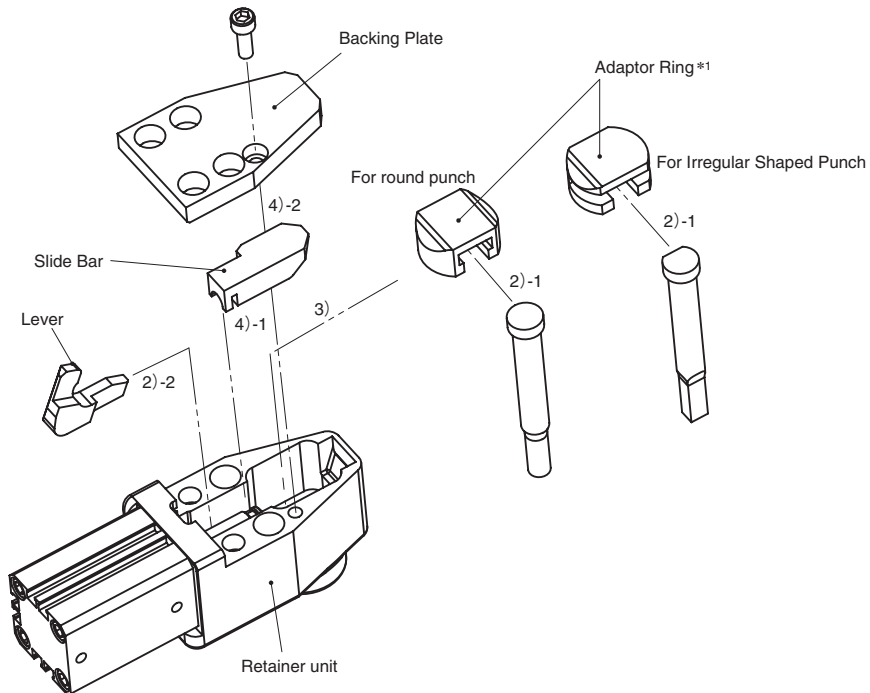
### Pierce Components

#### ■ Mounting a punch

- 1) Remove the Backing Plate and Slide Bar to pull out the Adaptor Ring.
- 2) Insert Punch into Adaptor Ring.
- 3) Reassemble the Adaptor Ring with the inserted Punch into Retainer Unit.

When using an Irregular Shaped Punch, reassemble the Adaptor Ring so the chamfer is in the rear (Air cylinder side). It cannot be reassembled in reverse direction.

- 4) Reassemble the Slide Bar and Backing Plate.

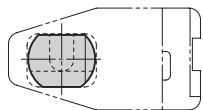
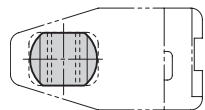


This page intentionally left blank

#### \*1 Adaptor ring specification

(For round punch)

(For Irregular Shaped Punch)



When using an irregular shaped punch, the clearances for the piercing ring and retainer main body must be correctly controlled. Check the alignment marks before setting in place.



# Pierce Selector

## PSR Series

### Pierce Components

#### Without Sensor

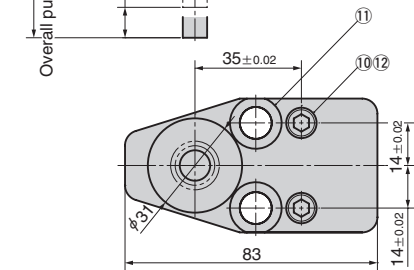
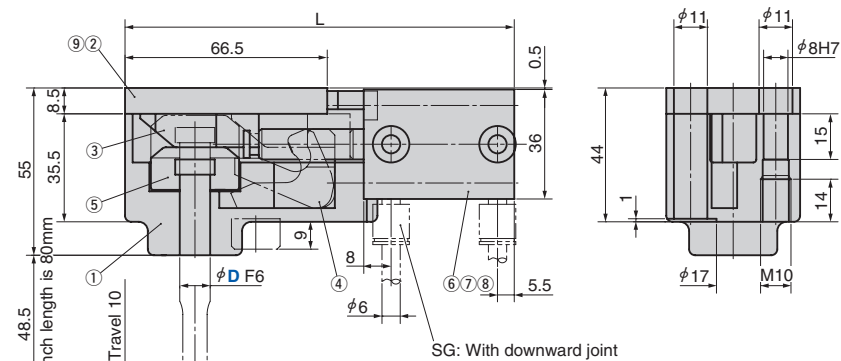
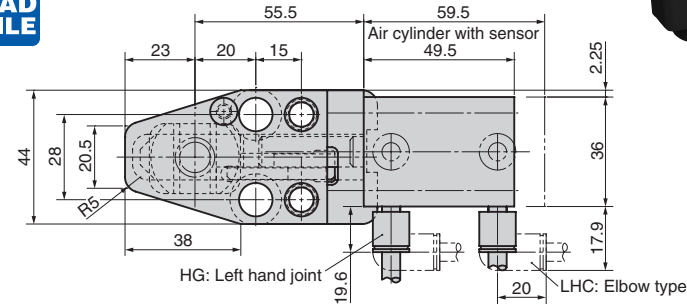
**PSR** (For Round Punch)

**PSRH** (For Irregular Shaped Punch)

#### With Sensor

**PSRS** (For Round Punch)

**PSRSH** (For Irregular Shaped Punch)



No.	Description	Qty	Material and Remark
1	Housing	1	SCM440
2	Backing Plate	1	S45C
3	Slide Bar	1	S45C
4	Lever	1	SCM440
5	Adaptor Ring	1	S45C
6	Air Cylinder	1	CKD (With/without sensor)
7	Joint	2	CKD (GWS6-M5)
8	Hexagon Socket Head Bolt	4	M5x50 (60)
9	Hexagon Socket Head Bolt	1	M5x15
10	Screw Plug	2	M10x10
11	Hexagon Socket Head Bolt	2	M10x65
12	Dowel	2	φ 8x40

- Cylinder, driving pressure Min 0.4 MPa
- Sensor Specification  
Contact, 2-wire type  
Operating voltage DC24V AC100V  
Reed length 3 m

Catalog No.	D	Joint position G	L		Weight [kg]	
			Without Sensor	With Sensor	Without Sensor	With Sensor
<b>PSR</b>	<b>10</b>	<b>HG</b> (Left joint)				
<b>PSRH</b>	<b>13</b>	<b>MG</b> (Right joint)	128	138	1.0	1.1
<b>PSRS</b>						
<b>PSRSH</b>	<b>16</b>	<b>SG</b> (Downward)				

Joint position: HG and SG are as shown in the diagram on the left page. The positions for MG are in a symmetric positions of HG shown in the diagram on the left page.



Order

Catalog No.	D	G	Option
<b>PSR</b>	<b>13</b>	<b>- HG</b>	
<b>PSR</b>	<b>13</b>	<b>- HG</b>	<b>- LHC</b>



Option

Option Code	Specification
<b>LHC</b>	The pipe joint is changed to the L (elbow) type. (GWL6-M5).

#### Design Guideline

When using PSRS type (PSR series with sensor) next to each other, secure a space with the dimensions below.

