

NEW

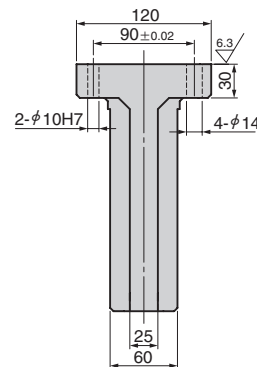
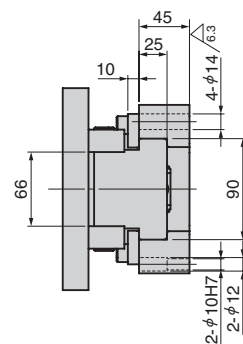
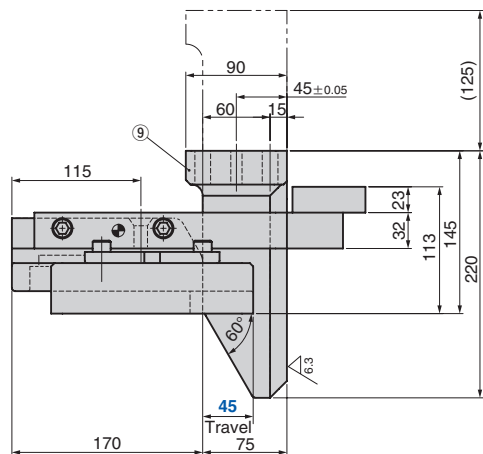
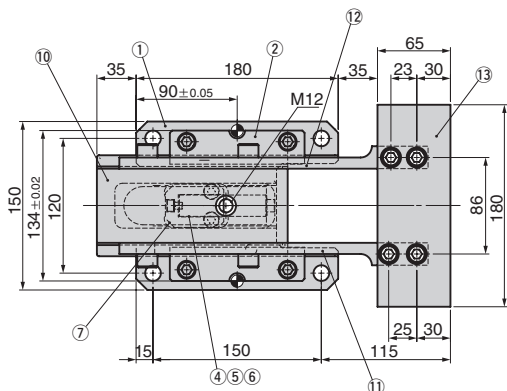
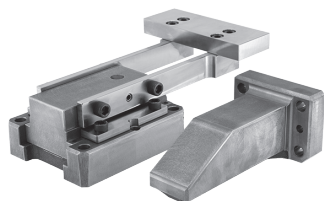
Coil Support Cam Type

Gas Spring Type

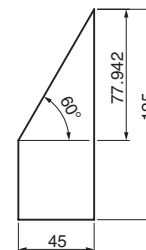
Blanking Die Components

STSCG

CAD FILE



● Cam Diagram



No.	Description	Qty	Material and Remark
1	Base	1	Cast Iron
2	Cam Upper Plate	2	Steel
4	Gas Spring	1	Refer to the Spring Specification.
5	Hexagon Socket Head Bolt	1	M06x008
6	Washer	1	M06
7	Spring Block	1	Steel
9	Cam Driver	1	Cast Iron
10	Cam Slider	1	Cast Iron with Graphite
11	Arm-R	1	Steel
12	Arm-L	1	Steel
13	Plate	1	Steel

Bolts, nuts, dowels and washers for assembly are not indicated.

Catalog No.	Travel S	Spring Type PS	Spring load [N (kgf)]	
			Initial load	Final load
STSCG	45	GK NGK	238 (24.3)	353 (36.0)
		GD NGD	237 (24.2)	365 (37.2)

GK: Gas Spring (KALLER) GD: Gas Spring (DADCO)
NGK/NGD: Without Gas Spring Parts for spring assembly are included.

Order	Catalog No.	S	PS	Option
	STSCG	45	GK	
	STSCG	45	GK	NF



Option Code	Specification
NF	Nitrogen gas not charged.

Spring Specification

No.	PS	Remark
4	GK	X170-050-TD-2.5MPa (KALLER)
	GD	U.0175.050.TO-2.5MPa (DADCO)



Gas Spring

Please contact your local sales representative if you prefer to use a gas spring not specified in our catalog. For use and maintenance of gas spring, please contact the manufacturer directly.

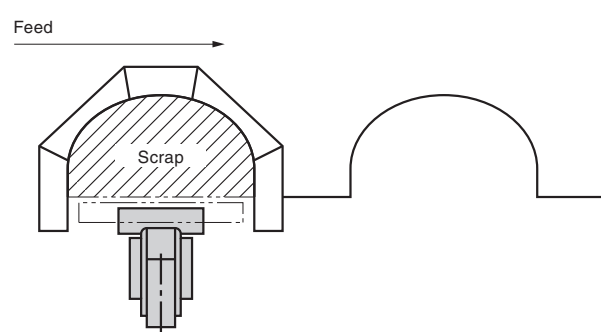
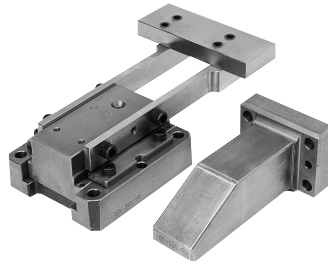
Blanking Die Components

Coil Support Cam Type [Overview]

Blanking Die Components

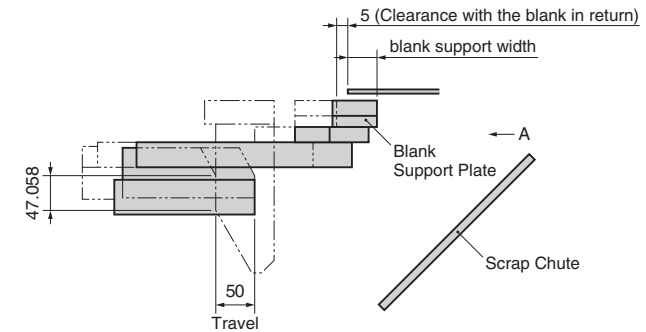
Coil support cam type means:

The cam type coil support is used to secure the space for scrap machining.
This corrects deflection of a blank sheet to prevent hitting with a cutter.



DESIGN ONLY

- Set the position of the blank and the coil support.
 - The guideline of the clearance between the blank in return (pressing) and the support plate is 5 mm.
 - The blank support plate should be manufactured by customers according to the blanking die specification.



- Standard for use of Coil Support
 - When the distance between cutters is 200 mm or more and the spring type coil support cannot be used, use this cam type.
 - The guideline of distance between the cutter and the blank support plate is 30 mm.

