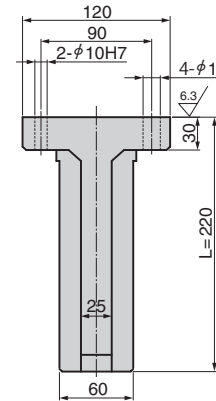
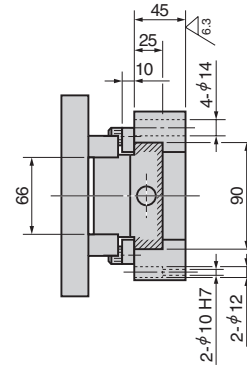
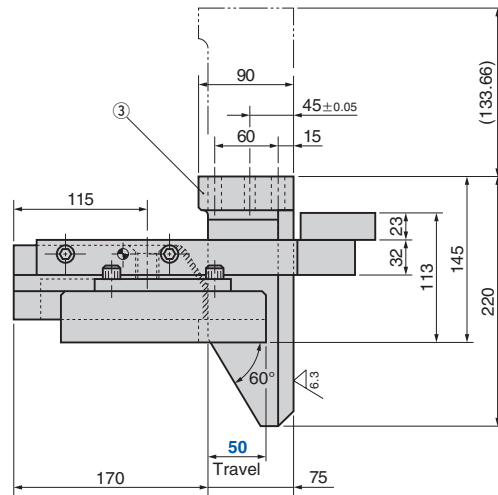
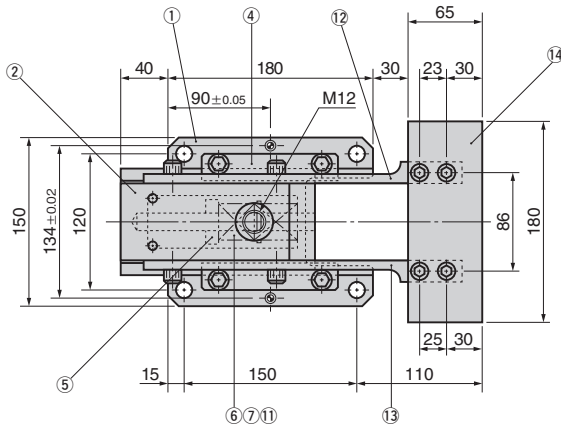
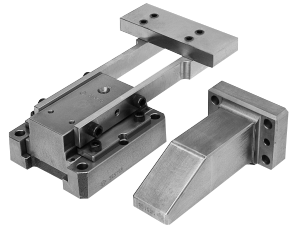


# Coil Support Cam Type

## Blanking Die Components

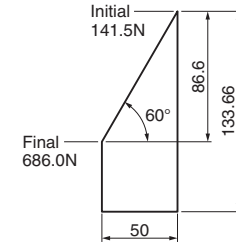
STSC

CAD FILE



### ● Spring Diagram

- Spring Model TF30-65
- Spring constant 21.78N/mm (2.22kgf/mm)



No.	Description	Qty	Material and Remark
1	Base	1	Cast Iron
2	Cam Slider	1	Cast Iron with Graphite
3	Cam Driver	1	Cast Iron
4	Cam Upper Plate	2	Steel
5	Spring Stopper	1	Steel
6	Spring Guide Pin	1	Steel
7	Spring	2	TF30x65
11	Guide Washer	1	Steel
12	Arm-L	1	Steel
13	Arm-R	1	Steel
14	Plate	1	Steel

Bolts, nuts, dowels and washers for assembly are not indicated.



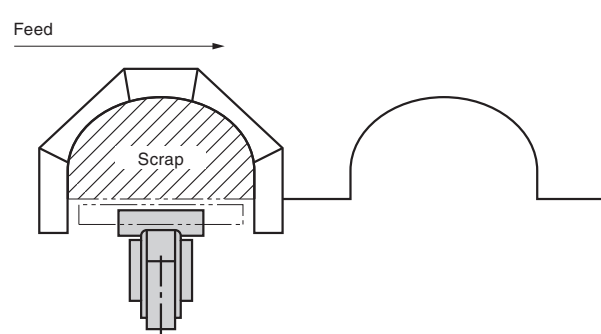
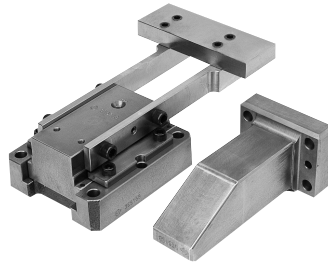
Catalog No. **S**  
STSC **50**

# Coil Support Cam Type [Overview]

## Blanking Die Components

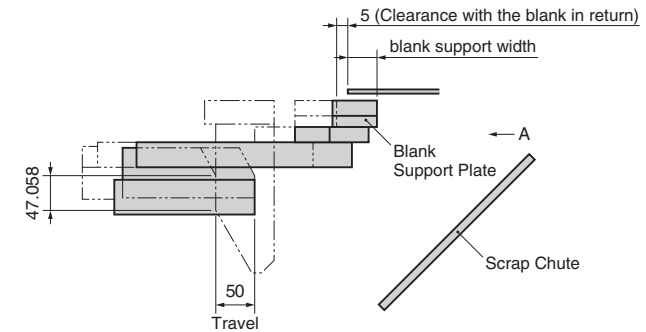
### Coil support cam type means:

The cam type coil support is used to secure the space for scrap machining.  
This corrects deflection of a blank sheet to prevent hitting with a cutter.



### DESIGN ONLY

- Set the position of the blank and the coil support.
  - The guideline of the clearance between the blank in return (pressing) and the support plate is 5 mm.
  - The blank support plate should be manufactured by customers according to the blanking die specification.



- Standard for use of Coil Support
  - When the distance between cutters is 200 mm or more and the spring type coil support cannot be used, use this cam type.
  - The guideline of distance between the cutter and the blank support plate is 30 mm.

