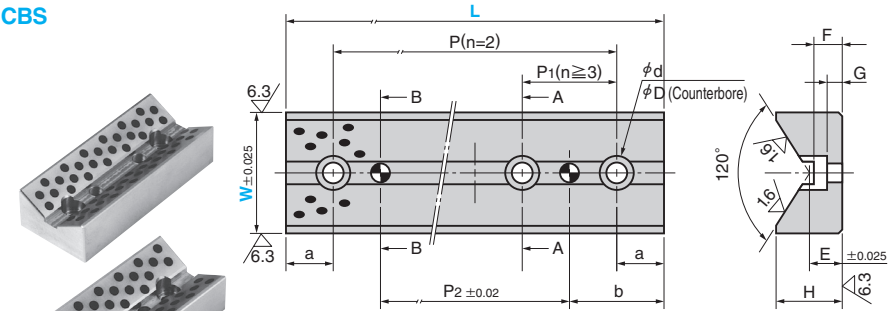


Cam Slide Guides

V GUIDE TYPE



CBS



*n is the number of bolt holes.

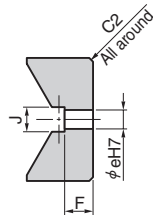
Section A-A

● Sliding Direction



● Bolt Hole

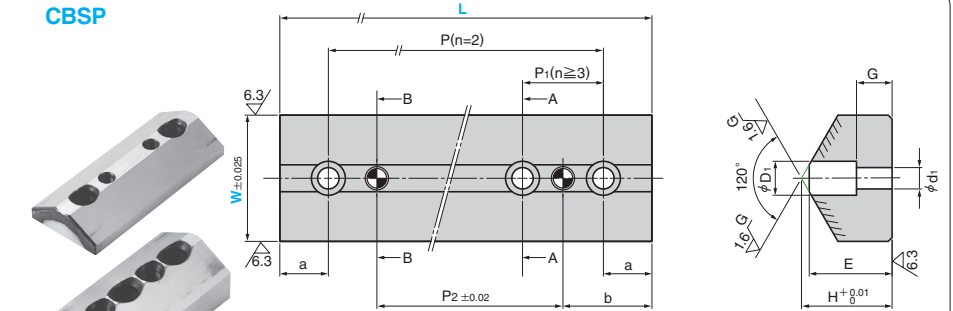
W	d	D
35	9	14
50.65	11	17.5



Section B-B

Material : Bronze with Graphite (SO#50 SP2)

CBSP



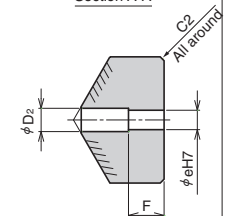
Section A-A

● Assembly of CBS and CBSP

W	h
35	35
50	50
65	65

● Bolt Hole

W	d1	D1
35	9	14
50.65	11	17.5



Section B-B

⚠ Dowel plug tap not included
Material : S45C
Hardness : HRC55 or more
Area to be Induction Hardened (Hatched Area)

H	a	b	P	P1	Number of Bolt Holes n	e	P2	E	F	G	J	Catalog No.	W	L
24	15	30	45			8	15	15		4	11	CBS	35	75
														60
	20	40	85	45	100									
			110	70	125									
31	15	30	45	-	2		15				13	CBS	50	75
														20
	25	50	75	25	125									
			100	50	150									
35	20	40	60			10	20	18		8		CBS	65	100
														3
	25	50	-	50				100						200
														4
							150							300

H	a	b	P	P1	No. of Bolt Holes n	E	e	D2	F	P2	G	Catalog No.	W	L	
20	15	30	45			17	8	10	12	15	4	CBSP	35	75	
														60	20
	20	40	85	45	125										
			110	70	150										
32	15	30	45	-	2	29		12	20	25	10	CBSP	50	75	
														20	40
	25	50	75	25	125										
			100	50	150										
47	20	40	60			10			20			CBSP	65	100	
														3	50
	25	50	-	50				44	14	15	100			200	
														4	14
														250	
															300

Order Catalog No. W - L
CBS 35 - 125

Order Catalog No. W - L
CBSP 35 - 125

⚠ CBS must be installed into the upper die, and CBSP must be installed into the lower die to prevent foreign objects from being trapped between CBS and CBSP causing significant galling on these plates.

