

# Cam Side Block

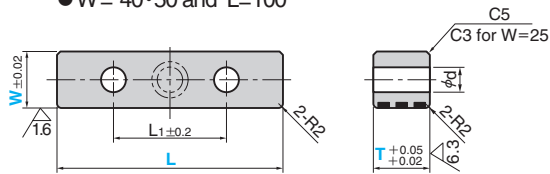
FC AND BRONZE TYPE

Addition

CAD FILE

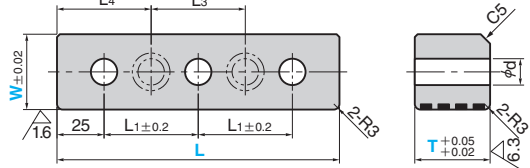
MCSRG (FC Type)  
MCSRW (Bronze Type)

- W = 25
- W = 40·50 and L=100

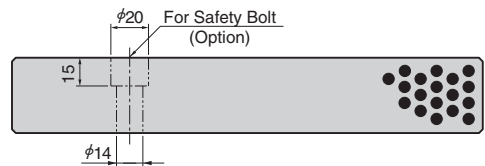
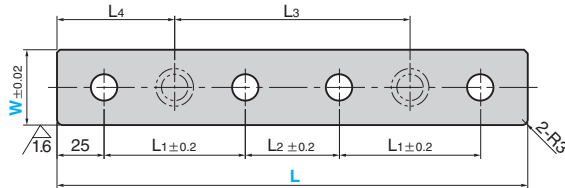


\* Holes for safety bolt are optional for W=40 and 50 only.

- W ≥ 40 L = 150 and 200



- W ≥ 40 L = 250



● Sliding Direction



Material  
MCSRG FC250 with Graphite  
MCSRW Bronze with Graphite(SO#50SP2)



Option

Option Code	Specification
ZA	Bolt holes to prevent falling of cam side block are drilled. W=40 and 50 only.

● Bolt Position

L	L3	L4
150	50	50
200	75	62.5
250	125	62.5



Order MCSRG 50 - 200 - 45-ZA

L1	L2	d	Catalog No.	W	L	T
45		11		25	75	25
50					100	
75					125	
100					150	
50		14		40	100	30
75					150	
50					200	
50		20	MCSRG MCSRW		100	45
75	50				150	
50					200	
50		50		50	100	55
75	50				150	
50					200	
75					150	60
50					200	
75					250	
75	50				150	70
					200	
					250	



Order

Catalog No. W - L - T  
MCSRG 40 - 200 - 30



Example

● When this block is used together with cam slide plate or wear plate.

Wear Plate Thickness	MCSRG Thickness T	Cam Slide Plate Thickness
10	30	20
	45	35
	60	50
20	40	20
	55	35
	70	50

