

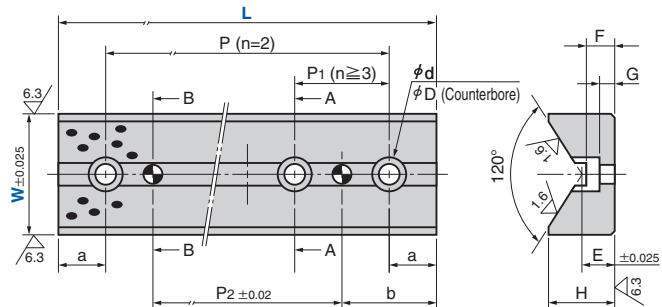
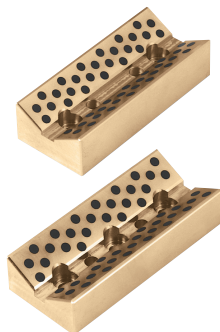
Cam Slide Guides

V Guide Type

Cam Slide Components

CBS

CAD FILE

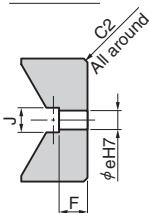


n is the number of bolt holes.

● Sliding Direction



Section A-A

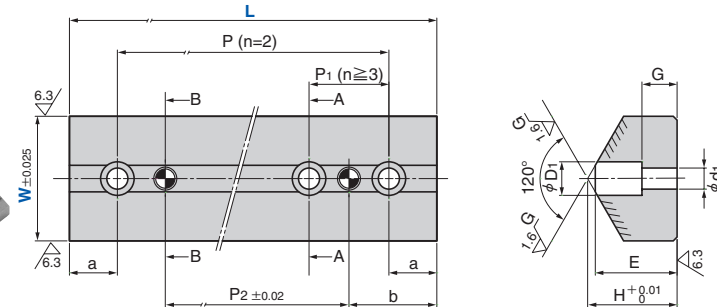


Section B-B

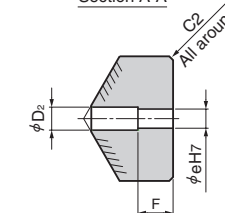
(Material) SO#50SP2

CBSP

CAD FILE



Section A-A



Section B-B

Dowel plug tap not included

(Material) 1045 (S45C)

(Hardness) HRC50~

Hatched area to be Induction Hardened

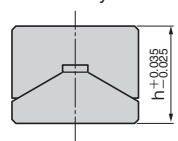
Catalog No.	W	L	H	a	b	P	P ₁	No. of Bolt Holes n	d	D	e	P ₂	E	F	G	J
CBS	35	75	24	15	30	45	-	2	9	14	8	15	15		4	11
		100		60	20											
		125		85	45											
		150		110	70											
CBS	50	75	31	15	30	45	-	2	11	17.5	10	15	18	15	8	
		100		60	20											
		125		75	25											
		150		100	50											
CBS	65	100	35	20	40	60	-	50	11	17.5	10	20	18	8		10
		150		3	50											
		200		4	100											
		250		5	150											
		300		6							200					



Catalog No. CBS W 35 L 125



● Assembly of CBS and CBSP



W	h
35	35
50	50
65	65



Catalog No. CBSP W 35 L 125

DESIGN ONLY

CBS must be installed into the upper die, and CBSP must be installed into the lower die to prevent foreign objects from being trapped between CBS and CBSP causing significant galling on these plates.

