

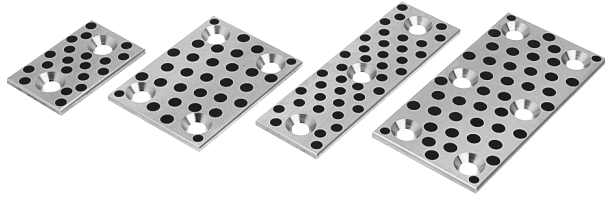
Wear Plate

Thickness 5 mm

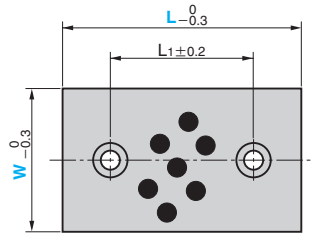
BRONZE THIN TYPE (5mm) WEAR PLATE

CAD FILE

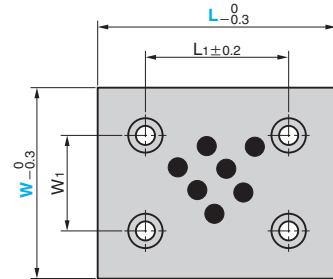
UWP



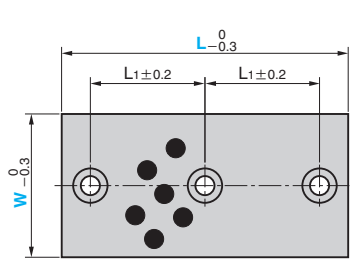
- W= 18 to 38, L= 50 to 100
W= 48, L= 75 to 125



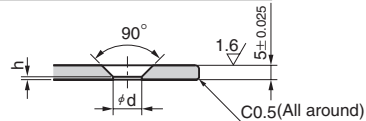
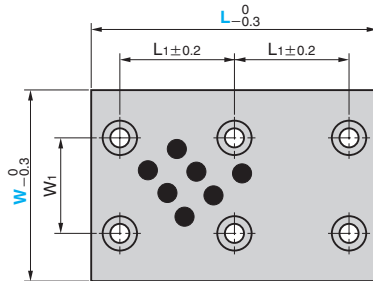
- W= 75, L= 75 to 125
W= 100, L= 100 and 125



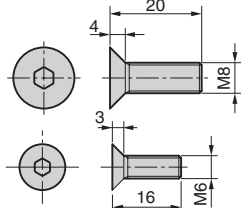
- W=18 to 48, L=150



- W= 75 and 100, L= 150



- Recommended Flat Head Bolt

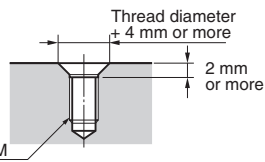
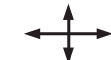


- Surface and all around R1.5

- Sliding Direction
W= 18, W=28 L=50



- W=28 L=75 or more



Material : Bronze with Graphite (SO#50 SP2)
Accessory : Flat Head Bolt

⚠ When tapped holes for mounting are drilled on the mating part, chamfer corners as shown below.

W ₁	L ₁	d	h	Mounting Bolt	Catalog No.	W	L
-	20	6.5	1.5	M6	UWP	18	50
-	45						75
-	70						100
-	60						150
-	20						50
-	45					28	75
-	70						100
-	60						150
-	20						50
-	45					38	75
-	70						100
-	60						150
-	45						75
-	70	10	0.8	M8		48	100
-	95						125
-	60						150
-	45						75
45	70					75	100
-	95						125
-	60						150
70	70						100
-	95					100	125
-	60						150



Order

Catalog No. **UWP**
W **75** - L **150**

■ We are ready to accept requests or orders for special parts.